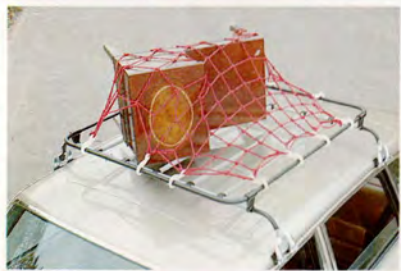
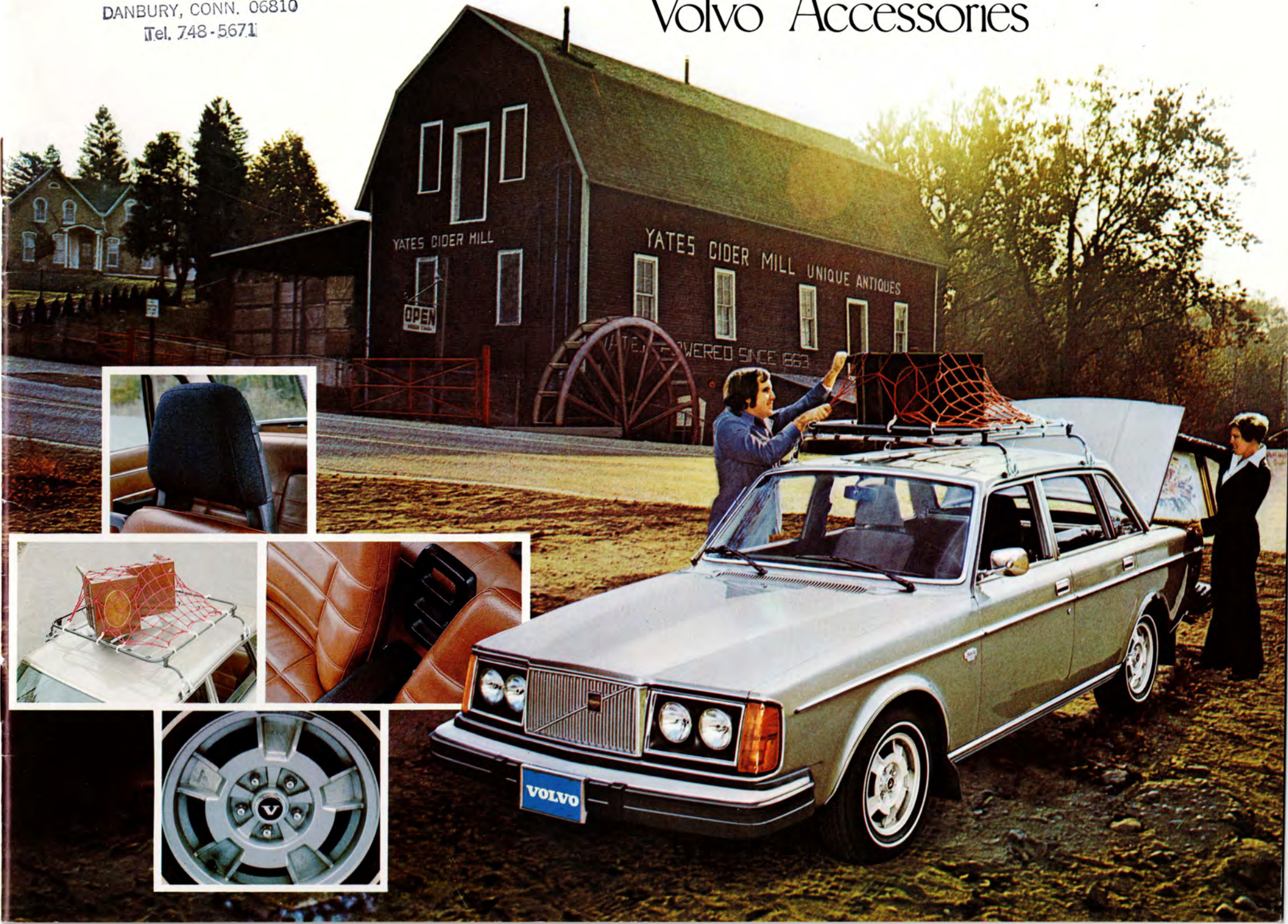


TRAYNOR PONTIAC, INC.
74 NEWTOWN ROAD
DANBURY, CONN. 06810
Tel. 748-5671

Volvo Accessories



It was logic that drove you to a Volvo showroom. Because among thinking people like yourself, Volvo has a reputation for being one of the world's most intelligently thought-out cars.

And one of the world's most complete cars too. Which accounts for our long list of standard equipment and our short list of optional factory-installed equipment.

However, there are some things you'll want to add to your Volvo.

Accessories.

Items whose purchase depends so much on personal taste or driving habits or family size or vacation preferences or individual whim that they couldn't be included on every Volvo.

So they're included here. In this booklet. The ones most popular with Volvo owners. But, obviously, not every accessory is right for every owner.

Once you find the accessories that make sense for you, you'll discover how much thinking has gone into their design.

For example: there are door pockets that do more than organize your clutter. And windshield wipers that go slower than normal because there are times when normal is just too fast.

You'll also find we stand behind every genuine Volvo accessory you buy. We can afford to: our accessories are constantly being tested at the factory,

not just to make sure they work, but to make sure they'll work right over a period of time.

So we can give you a warranty on your genuine Volvo accessories which is equal to that on your new Volvo.

This warranty supplements the terms and conditions of the New Car Warranty. (Copies are available from your Volvo dealer or Volvo of America Corporation, Rockleigh, New Jersey, 07647).

The Accessory Warranty reads like this:

"Volvo of America Corporation warrants to the purchaser of each new genuine Volvo accessory that such accessory will be free from defects in material or workmanship for 12 months from the date of purchase. Any such defective accessory will be exchanged or repaired without charge during the warranty period.

If such accessory was originally installed by a Volvo dealer, the labor for removal and replacement will also be covered by this warranty.

Warranty repairs will be made by any authorized Volvo dealer in the United States and Canada.

Labor for removal and replacement of a defective accessory sold BUT NOT INSTALLED by an authorized Volvo dealer is not covered by this warranty. In such instances, the defective acces-

sory will be exchanged or repaired free of charge.

Accessories not marketed by Volvo are not covered by this warranty.

When requesting warranty repairs on accessories, the purchaser must present evidence of purchase, sales ticket or repair order showing payment to any authorized Volvo dealer in the United States or Canada during normal business hours."

If you buy accessories from someone other than your Volvo dealer, they may be covered by a part-time warranty: 30 days.

Now, you're a thinking person.

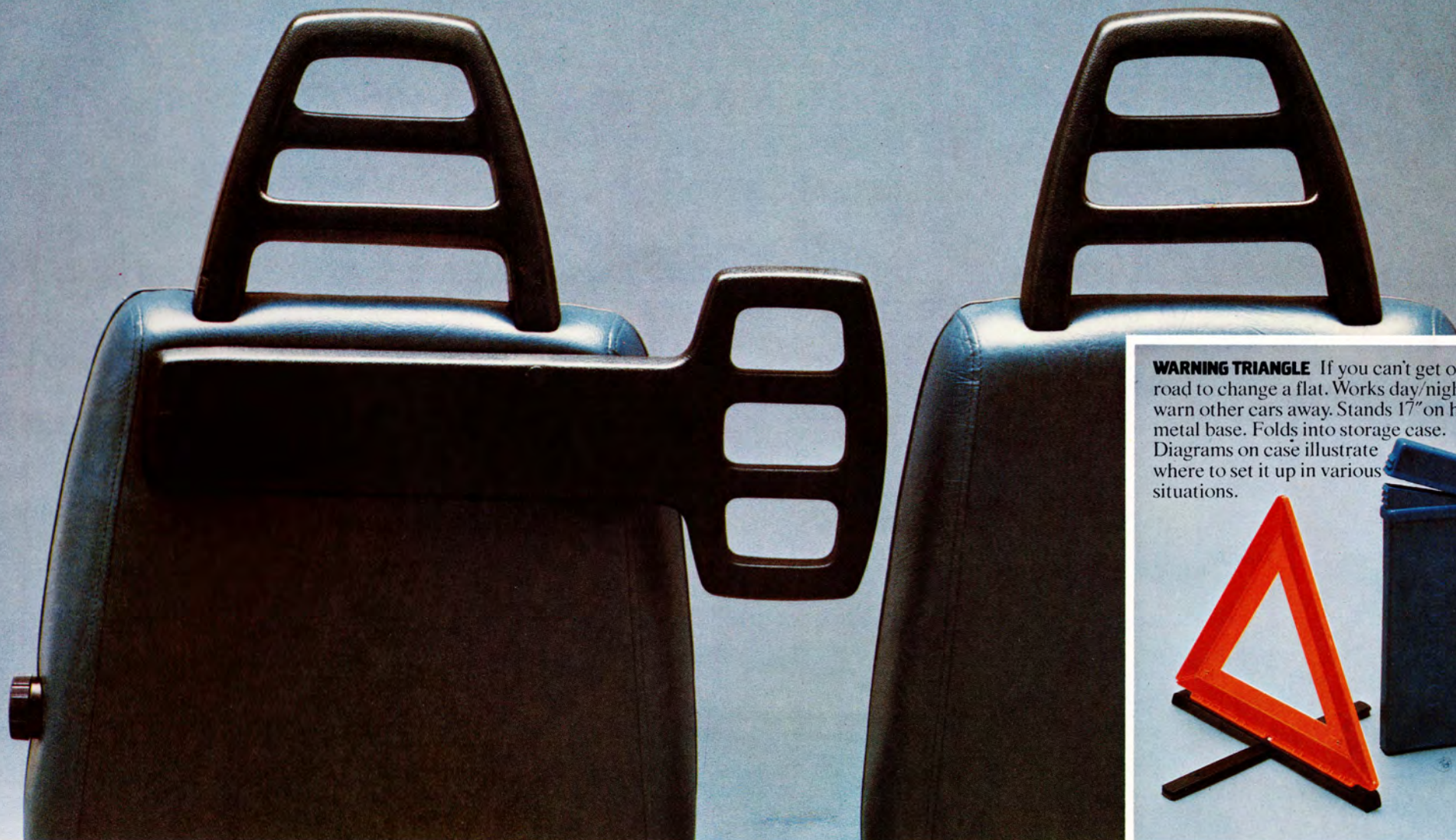
How can you place your confidence in their accessories when it appears that even they don't?

2 SAFETY ACCESSORIES

THEY'D BE STANDARD IF CHILDREN WEREN'T OPTIONAL. AND ROADS NEVER HAD SHOULDERS.

Where safety is concerned, so is Volvo. In 1956, we installed padded dashboards, 12 years before the government insisted on them. In '59 Volvo became the first mass-produced car in the world with safety belts as standard equipment. (The government required them 9 years later.) Our 2 independent brake circuits each operate 3 brakes. So if you lose one circuit, you'd still have about 80% of your braking power. Your Volvo is built with impact-absorbing front and rear ends. Passengers ride in a cage, surrounded by steel pillars. We try to anticipate almost everything. But we can't guess your family plans. Or where you're going to have to change a flat tire. So these accessories are optional.

CHILD GUARD This padded barrier plugs the gap between the bucket seats to prevent children in back from being thrown forward between the seats in an emergency stop. Constructed of energy-absorbing foam plastic over a tubular steel frame. Mounts against the frame of the driver's seat which is pre-drilled to accept 3 bolts. Collision-tested at the Volvo Technical Center.



WARNING TRIANGLE If you can't get off the road to change a flat. Works day/night to warn other cars away. Stands 17" on heavy metal base. Folds into storage case. Diagrams on case illustrate where to set it up in various situations.



8 AUDIO ACCESSORIES

BECAUSE WHEN IT COMES TO SOUND, NOT EVERYBODY IS ON THE SAME WAVELENGTH.

One reason you chose a new Volvo is the performance you expect from its new engine. But this source of pleasure (with its electrical systems) can also be a source of radio interference, especially if your radio is not totally design-compatible with the car. Logically, it follows that nobody is in a better position to design a radio that will suppress this interference than the people who created it: Volvo's electrical engineers. And that's just what they've done.

So if you listen to reason, you'll get one of the Volvo radios shown here. And nothing less.

Your new Volvo is brought to you with several of the components of an audio system already in place. There's an antenna embedded in the glass of your windshield. And there are 2 speakers, one mounted in each front door. But the choice of radio is up to you. You have 6 individual sound systems to select from.

- 1) AM/FM Stereo and 40 Channel CB combination.
- 2) AM radio.
- 3) AM/FM radio.
- 4) AM/FM Stereo. A mast antenna is included for the best possible stereo reception.
- 5) AM/FM Stereo Cassette. Includes mast antenna.
- 6) AM/FM Stereo 8-Track Cartridge. Includes mast antenna.

When you push in the cassette or cartridge, programming is changed automatically from radio to pre-recorded material. You change tape channels by depressing a knob. The vertical head movement provides the tape speed necessary to produce a truly high fidelity stereo tape performance.

There's a huge difference between the quality of stereo sound and that of monaural sound. Most people who listen to both wouldn't hear of putting anything but stereo in their Volvo. But we can't sell you on it. Only your own ears can. Ask your Volvo dealer to give them a demonstration.

*This device has not been approved by the Federal Communications Commission as of the publication date of this catalog. This device is not, and may not be, offered for sale or lease, or sold or leased, until the approval of the FCC has been obtained by Volvo of America Corporation.

1) AM/FM STEREO AND 40 CHANNEL CB SYSTEM.* Now enjoy 40 Channel CB capability with AM/FM Stereo Radio in one complete in dash unit.





2)

AM RADIO



3)

AM/FM RADIO



4)

AM/FM STEREO



5)

AM/FM STEREO CASSETTE



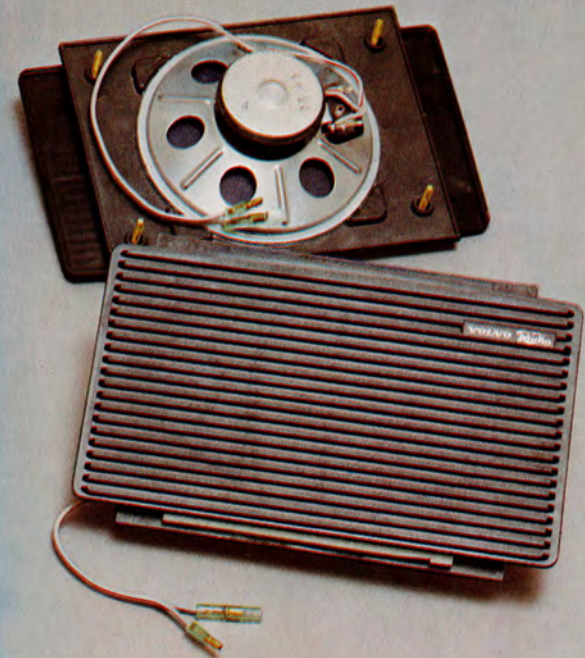
6)

AM/FM STEREO 8-TRACK



A mast antenna comes standard with Volvo's stereo radios. However, you may prefer an antenna that's vandal-proof. This power model (left) is infinitely extendable up to 40". It retracts into a mount in the right front fender. You operate it from a rocker switch on your instrument console.

The owner who wants to totally immerse himself in sound will cover his back with this rear stereo speaker kit (below). Speakers mount on the ledge under the rear window in sedans.



17 TRAVEL/LOAD CARRYING ACCESSORIES

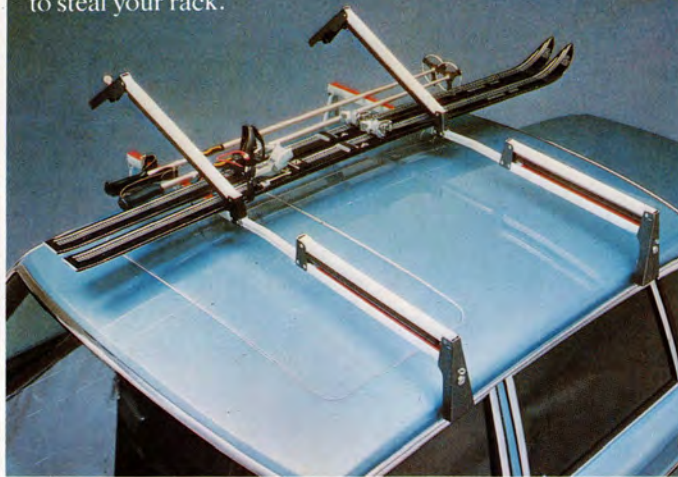
FOR PEOPLE WHO WANT TO LOAD THE ROOF. AND THOSE WHO'D RATHER PUT IT ALL BEHIND THEM.

A Volvo sedan's deep, boxy trunk is larger than most: 13.8 cu. ft. While behind the station wagon's rear seat there's room for 12 two-suiters. So your load and your passengers should never have to occupy the same space at the same time. These accessories will make that possibility even more remote.

PERMANENT WAGON RACK/RAK-PAK Chrome steel. Approx. 15 sq. ft. of load space. Rak-Pak (separate accessory), a zippered container with masonite bottom, keeps what's on the roof out of the weather.



LOCKABLE SKI RACK Holds 4 pairs. Built-in cylinder locks secure the skis. To steal your skis, thief would have to steal your rack.



LOAD CARRIER/EXTENSION RAILS For things like ladders, you want the load carrier. For wider loads, like plywood sheets, you can add the extension rails. They adjust up to a total width of 76 in. (Shown.) Also available: ski adapter straps.



AUXILIARY SEAT

Turns your Volvo into a 7-passenger wagon. Seats 2 children comfortably. Fully equipped with seat belts, head restraints, armrests. Fold it into the floor when you want to carry big things instead of little ones.

TRAILER HITCH Bolts through pre-drilled holes in your Volvo's frame for exceptional strength. Tongue and ball are removable. For trailer and load not exceeding 2000 lbs.



Ball and drawbar assembly should be removed when not in use.

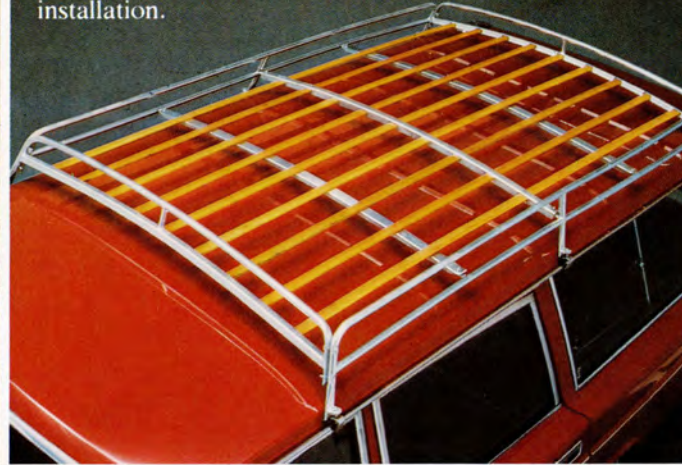
TRAILER WIRING HARNESS/ ADAPTER PLUG Without these 2 accessories, you can't operate your trailer's taillights, brake lights, turn signals, emergency flashers. And the law says you can't be without them.



REMOVABLE SEDAN RACK Made of zinc-plated steel tubing. Almost 12 sq. ft. of load space. (Also available: a zippered weatherproof Luggage Container.)



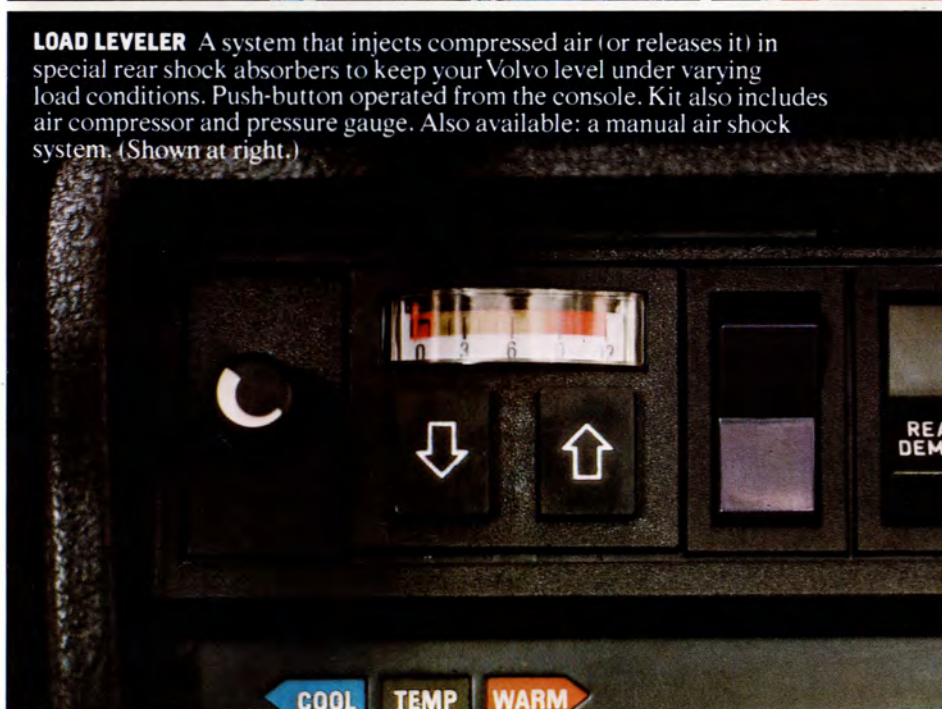
REMOVABLE WAGON RACK Nine varnished wooden loading ribs. Over 17 sq. ft. of load space. Six clamps on rain gutters provide maximum security with easy installation.



LUGGAGE NET Rubberized, elastic "rope" with 12 plastic hooks. With one of these, you'll never have to tie another granny knot.



LOAD LEVELER A system that injects compressed air (or releases it) in special rear shock absorbers to keep your Volvo level under varying load conditions. Push-button operated from the console. Kit also includes air compressor and pressure gauge. Also available: a manual air shock system. (Shown at right.)



REAR VIEW MIRROR EXTENSION ARM For looking around wide loads when you're towing. Attaches to the base of your regular side rear view mirror. (For a right side rear view mirror, see CONVENIENCE SECTION.)



9 WEATHER ACCESSORIES

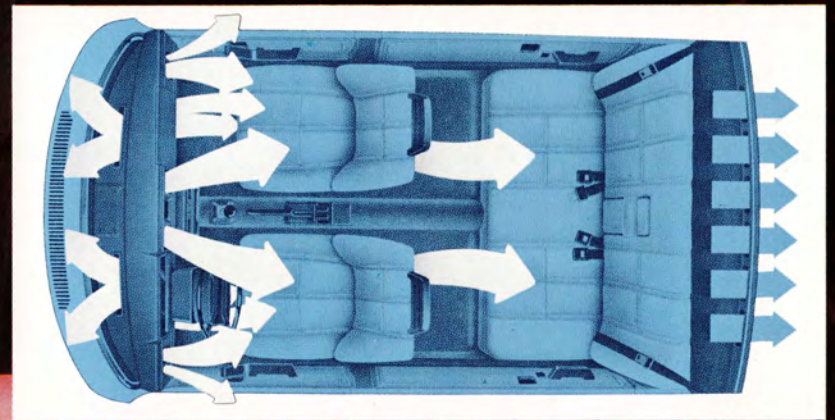
WHERE YOU LIVE, IT MAY NOT SIZZLE. AND FOG. AND FREEZE. AND DRIZZLE.

But it's got to do at least one of those things. Which is why it's wise to get at least one of these accessories before the fact.

AIR CONDITIONER Built especially for Volvo to work off the Volvo engine. It utilizes the ductwork — already installed — of your Volvo's heating/ventilation system. (See below.) So cool, clean, dehumidified air can be distributed through as many as 12 outlets. Controls, including that for the 3-speed fan, are located in the center console. You lose absolutely no leg room when you add this accessory. (Meets all State and S.A.E. recommended safety standards.)



This is how heat (white arrows) is distributed throughout your Volvo. The air conditioner uses the same outlets so nobody is left out of the cool. Volvo is one of the few car makers that doesn't neglect the back seat passenger.



GRILL FOG LIGHT KIT White quartz iodine halogen lamps. Can't be knocked off your bumper. They're not on the bumper but behind, mounted in a special grill.



INTERVAL WIPERS In a drizzle, normal speed can be too fast. Interval wipers, easily regulated from the console, vary speed from normal (1 sweep per sec.) to 1 sweep every 30 secs.



POWER-LOCK LIMITED SLIP DIFFERENTIAL Whether you drive in foul weather, on back roads or do occasional rallying, if one wheel starts to spin, this accessory makes sure the other drive wheel gets you going again.



COLD WEATHER ADDITIVES Lock de-icer to get inside. Gas line antifreeze to get started. Windshield washer antifreeze to see where you're going.



ENGINE BLOCK HEATER For fast, frigid-weather starts. Wiring is conveniently stored under the hood. In cold weather, simply plug the other end into your house current.



SUNROOF SUN SHIELD A smoked plastic fixture that anchors to the roof. Reduces glare and wind noise.



7 CONVENIENCE ACCESSORIES

IF YOU DON'T BUY THESE ACCESSORIES, YOU CAN GET ALONG WITHOUT THEM.

But once you do, you can't.

POWER FRONT WINDOWS Both operate independently from the center console. Five seconds to completely open or shut. Saves you elbow grease. And the strain of reaching across to adjust the passenger-side window.



PASSENGER HEAD RESTRAINT CUSHIONS Foam-padded pillows for people who like to turn their infinitely adjustable bucket seats to "fully recline."



LOCKABLE GAS CAP Costs less than it does to replace one tankful of siphoned-off gas. Two keys so if one is lost, you won't be faced with a personal energy crisis.



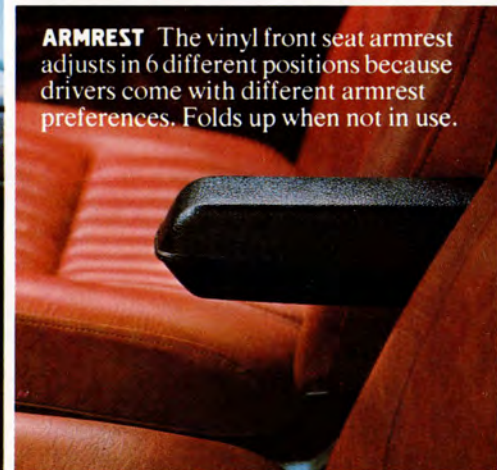
RIGHT SIDE REAR VIEW MIRROR Saves you the embarrassment of parking too far from the curb. With extension arm added, it saves you a fine if you're towing something. (See TRAVEL/LOAD SECTION.)



STEERING WHEEL COVER Black leather or vinyl cover laces over the wheel. Keeps hands warm in winter, dry in sticky weather.



ARMREST The vinyl front seat armrest adjusts in 6 different positions because drivers come with different armrest preferences. Folds up when not in use.



CRUISE CONTROL Enjoy the convenience, comfort and safety of cruise control with the touch of a button. This unit is the only Volvo safety approved speed control device on the market today.



5 ORGANIZER ACCESSORIES

FOR PEOPLE WHO THINK THERE'S A PLACE FOR EVERYTHING, HERE ARE FIVE PLACES.

Close at hand yet out of your way, these cleverly designed accessories occupy spaces that would otherwise go unused.



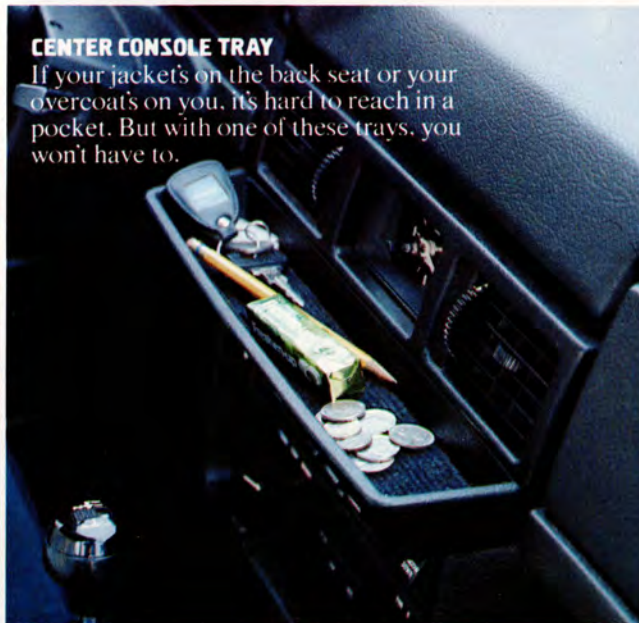
DOOR POCKETS Designed so you won't lose your soda/coffee. Or the door the pocket is attached to. A reflective strip alerts approaching cars to your open door at night.



TRUNK BASKET A place to store your CARE/MAINTENANCE ACCESSORIES. And other things you don't want rolling around.



COURTESY TRAY



CENTER CONSOLE TRAY

If your jackets on the back seat or your overcoats on you, it's hard to reach in a pocket. But with one of these trays, you won't have to.



FLOOR CONSOLES Installed between front seats and doors. If you prefer to reach down, instead of up or ahead, for things.

3 TRIM ACCESSORIES

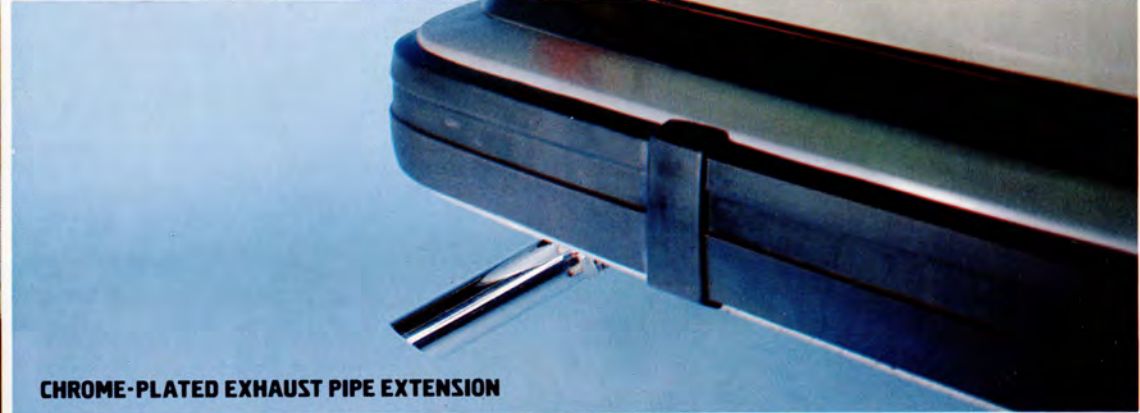
Some people think a Volvo could use just a few extra decorative touches outside. So we've provided three.

FOR VOLVO OWNERS WITH A CREATIVE FLAIR.

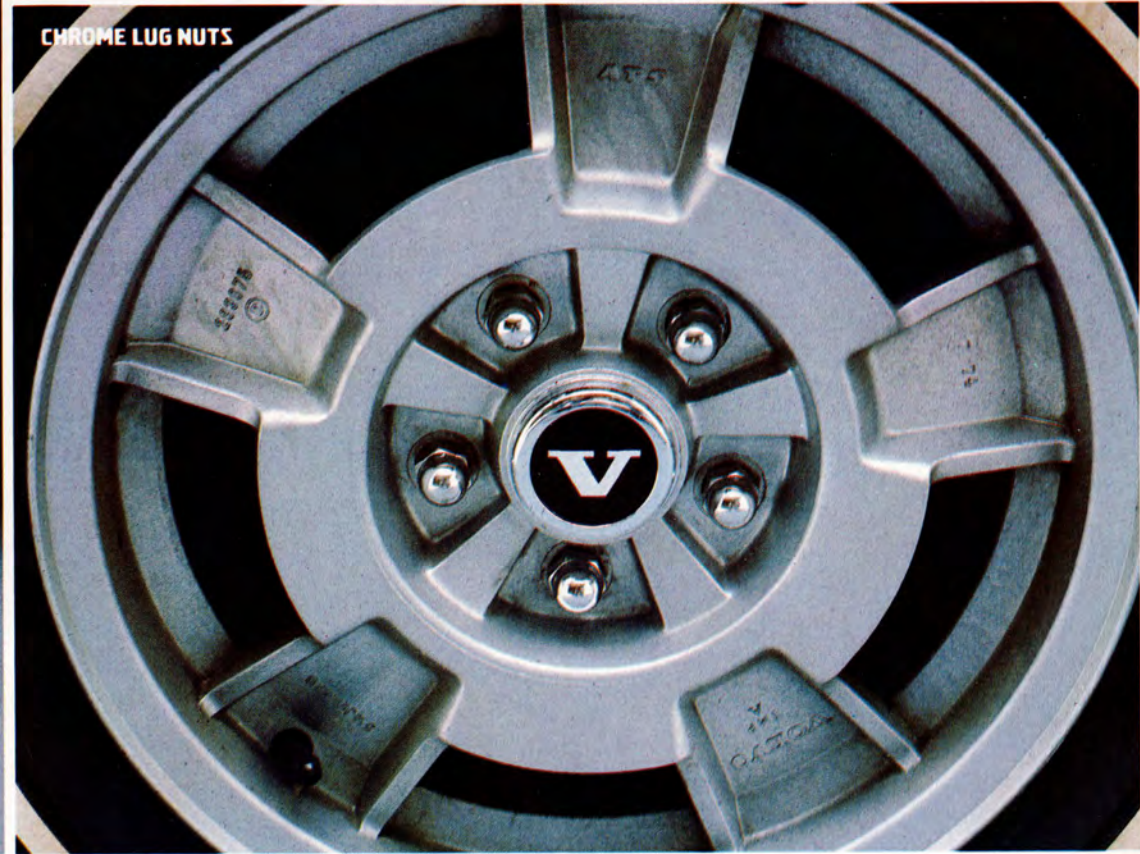
WHEEL COVERS



CHROME-PLATED EXHAUST PIPE EXTENSION



CHROME LUG NUTS



6 GT/SPORT ACCESSORIES

OR A COMPETITIVE STREAK. Volvo doesn't sell a "sports car." But that shouldn't stop you from trying to build your own.

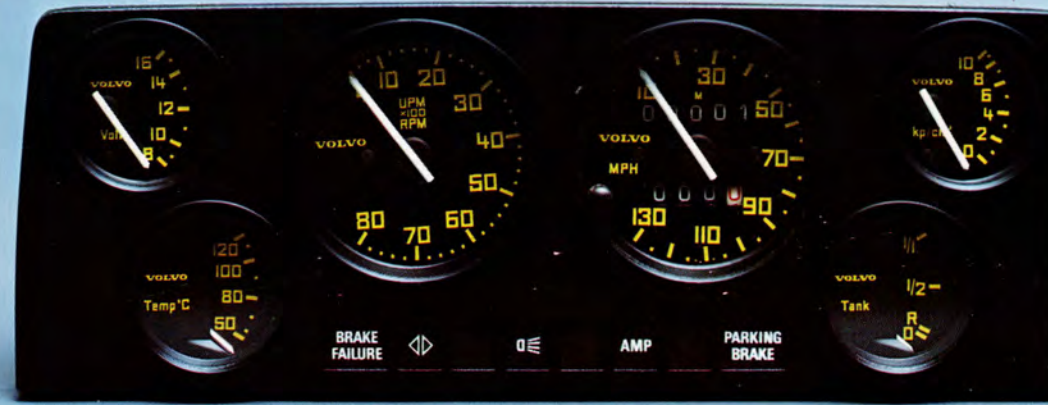
GT WHEELS Made of aluminum alloy. Each wheel weighs only 12½ lbs. You save 6 lbs. compared to a standard wheel.



TACHOMETER For people who think engine speed is as important as car speed.



GT INSTRUMENT PANEL Six instruments: tachometer, voltmeter, oil pressure gauge, temperature gauge, fuel gauge, speedometer. Plus odometer and trip odometer. Plus 8 warning lights.



GT STEERING WHEELS A smaller diameter than the standard wheel (by 1-5/16 in.) for faster response. A thicker wheel for a better feel. Below: the 260 series. Right: for all other models.



GT SHOCKS Heavy duty shock absorbers for better handling under adverse conditions. Two pairs to a set. (Front and rear.)



15 CARE/MAINTENANCE ACCESSORIES

AS LONG AS YOU'RE GOING TO KEEP YOUR VOLVO, KEEP IT NEW.

To preserve your Volvo underneath, holes are punched out where water might otherwise collect. Galvanized steel is used in areas most prone to rusting. And two separate undercoating compounds are applied. You can use these accessories to preserve the Volvo that's on top. Because some day you'll go to sell your car. And that's when you'll discover the difference between one that's been cared for and one that hasn't.

PAINT Primers for starters. Enamel and metallic touch-up kits (rubbing compound, paint, applicator) and spray cans for finishers. Volvo paints are the same tone as the original and age at the same rate. So nobody will notice the touch-up job you're so proud of. Also: silver paint for the wheels.



WAXING/POLISHING Made especially for Volvo to preserve your Volvo paint job.



CARGO MAT Custom tailored to precisely fit your wagon's cargo area. Rubber base with tough vinyl top. Keeps original carpet in "like new" not "used truck" condition.



YEAR-ROUND CARE Windshield cleaner, cooling system rust preventive & water pump lubricant, brake fluid and silicone lubricant spray for fan belts, moving parts and even sticky garage doors.



FRONT FLOOR MATS Protect your carpet. Protect yourself. These rubber mats can't creep forward. They're held in place with plugs pre-set in the floor. (Rear floor mats also available.)





VOLVO

VOLVO

accessoires

1976 Accessory Price List

| Description | Model Application | Part Number | Price (Including inst. if applic.) |
|-------------------------------------------------|----------------------------------------|-------------|------------------------------------|
| SAFETY (Page 3) | | | |
| Child Guard | All | 283667-4 | |
| Warning Triangle | All | 283342-4 | |
| AUDIO (Pages 4 & 5) | | | |
| AM Radio | All | 283733-4 | |
| AM/FM Radio | All | 283734-2 | |
| AM/FM Stereo Radio | All | 283735-9 | |
| AM/FM Stereo Radio with Cassette Tape Player | All | 283736-7 | |
| AM/FM Stereo Radio with 8 Track Tape Player | All | 283737-5 | |
| Power Antenna | All | 283652-6 | |
| Stereo Rear Speaker Kit | All | 283699-7 | |
| TRAVEL/LOAD CARRYING (Pages 6 & 7) | | | |
| Permanent Wagon Roof Rack | 245/265 | 279902-1 | |
| Rak Pak | 245/265 | 284015-5 | |
| Lockable Ski Rack | All | 284016-3 | |
| Load Carrier | All | 283276-4 | |
| • Extension Rails | All | 283277-2 | |
| • Ski Adapter Straps | All | 283278-0 | |
| Auxiliary Seat | 245/265 | 283661-7 | |
| Trailer Hitch | All | 283094-1 | |
| Trailer Wiring Harness | All | 283657-5 | |
| Trailer Adapter Plug | All | 277275-4 | |
| Removable Sedan Rack | All Sedans | 282765-7 | |
| Removable Wagon Rack | 245/265 | 281376-4 | |
| Luggage Net | All | 1128178-9 | |
| Load Leveler Systems | | | |
| • Semi Automatic | All | 283631-0 | |
| • Manual | All | 283632-8 | |
| Rear View Mirror Extension Arm | All | 1128087-2 | |
| WEATHER (Pages 8 & 9) | | | |
| Air Conditioner | 240 series cars with power steering | | |
| • Base unit | | 283122-0 | |
| • Kit for left hand drive | | 283124-6 | |
| • Kit for power steering | | 283123-8 | |
| Air Conditioner | 240 series cars without power steering | | |
| • Base unit | | 283122-0 | |
| • Kit for left hand drive | | 283124-6 | |
| • Anchorage Plate | | 1219246-4 | |
| Air Conditioner | 264 DL series cars | | |
| • Base unit | | 283126-1 | |
| • Kit for left hand drive | | 283127-9 | |
| • Wire Harness | | 1234691-1 | |
| Grill Fog Light Kit | 240 series cars | 283665-8 | |
| Interval wipers | All | 282880-4 | |
| Power-Lock Limited Slip Differential | All | 279951-8 | |
| Engine Block Heater | 240 series cars | 277536-9 | |

| | | | |
|---------------------------------|-----------------|----------|--|
| | 260 series cars | 284048-6 | |
| Cold Weather Additives | | | |
| • Lock De-Icer | All | 284037-9 | |
| • Gas Line Anti-freeze | All | 284032-0 | |
| • Windshield Washer Anti-freeze | All | 284031-2 | |
| Sunroof Sun Visor | Sunroof models | 283982-7 | |

CONVENIENCE (Page 10)

| | | | |
|----------------------------------------|-----------------------------|-----------|--|
| Power Front Windows | 240 & 260 DL series cars | 283595-7 | |
| Passenger Head Restraint Cushions (Pr) | All | 283819-1 | |
| Lockable Gas Cap | All | 283235-0 | |
| Steering Wheel Covers | | | |
| • Vinyl | All | 282926-5 | |
| • Leather | All | 282925-7 | |
| Right Side Rear View Mirror | 240 series cars | 1213993-7 | |
| Adjustable Armrest | All | 283668-2 | |

ORGANIZERS (Page 11)

| | | | |
|----------------------|--------|----------|--|
| Door Pockets (Pr.) | All | 283817-5 | |
| Trunk Basket | Sedans | 281110-7 | |
| Courtesy Tray | All | 282683-2 | |
| Center Console Tray | All | 283673-2 | |
| Floor Consoles (Pr.) | All | 283818-3 | |

TRIM (Page 12)

| | | | |
|-------------------------------|-----------------|----------|--|
| Wheel Covers | 240 series cars | 283664-1 | |
| Chrome Lug Nuts (each) | All | 688984-4 | |
| Chrome License Plate Frame | All | 284014-8 | |
| Chrome Exhaust Pipe Extension | All | 283474-5 | |

GT/SPORT (Page 13)

| | | | |
|---------------------|---------------------|-----------|--|
| GT Wheels | All | 283075-0 | |
| Tachometer | 240S w/atuo trans | 283546-0 | |
| | 260S w/auto trans | 283547-8 | |
| GT Instrument Panel | 245 | 283065-1 | |
| | 242/244 | 283067-7 | |
| | 265 | 283142-8 | |
| | 262/264 | 283069-3* | |
| | * Requires Oil Plug | 464592-5 | |
| GT Steering Wheel | 240 series cars | 283626-0 | |
| | 260 series cars | 1128127-6 | |
| GT Shock Absorbers | | | |
| Front | All | 283084-2 | |
| Rear | All | 283085-9 | |

CARE/MAINTENANCE (Page 14)

| | | | |
|----------------|----------------|----------|--|
| Paint | | | |
| Cascade White | Color Code 042 | | |
| • Touch-up Kit | | 283478-6 | |
| • Spray | | 277502-1 | |
| Pacific Blue | Color Code 096 | | |
| • Touch-up kit | | 283490-1 | |
| • Spray | | 281070-3 | |
| Caribbean Red | Color Code 117 | | |
| • Touch-up kit | | 283508-0 | |
| • Spray | | 283318-4 | |

| Description | Model Application | Part Number | Price (Including inst. if applic.) |
|--------------------------------------------------------------|-------------------|-------------|------------------------------------|
| Berkshire Green | Color Code 118 | | |
| • Touch-up kit | | 283637-7 | |
| • Spray | | 283635-1 | |
| Cumberland Yellow | Color Code 116 | | |
| • Touch-up kit | | 283507-2 | |
| • Spray | | 283312-7 | |
| Alpine Blue Metallic | Color Code 111 | | |
| • Touch-up kit | | 283504-9 | |
| • Spray | | 282474-6 | |
| Sahara Beige Metallic | Color Code 119 | | |
| • Touch-up kit | | 283643-5 | |
| • Spray | | 283641-9 | |
| Andes Copper Metallic | Color Code 120 | | |
| • Touch-up Kit | | 283649-2 | |
| • Spray | | 283647-6 | |
| Aluetian Blue | Color Code 121-1 | | |
| • Touch-up kit | | 1128149-0 | |
| • Spray | | 1128147-4 | |
| Mojave Beige | Color Code 121-1 | | |
| • Touch-up kit | | 1128155-7 | |
| • Spray | | 1128153-2 | |
| Shenandoah Green | Color Code 123-1 | | |
| • Touch-up kit | | 1128161-5 | |
| • Spray | | 1128159-9 | |
| Wheel Paint - Silver | All | 277516-1 | |
| Primer | All | 277918-9 | |
| Maintenace Items | | | |
| • Soft Paste Wax | All | 284030-4 | |
| • Liquid Paste Wax (12 oz.) | All | 279245-5 | |
| • Liquid Polish (14 oz.) | All | 279140-8 | |
| • Silicone Lubricant Spray | All | 284035-3 | |
| • Brake Fluid | All | 284034-6 | |
| • Windshield & Glass Cleaner | All | 284036-1 | |
| • Cooling Sys. Rust Preventative and water pump lubricant | All | 284033-8 | |
| FLOOR MATS | | | |
| Black Front L | All | 283056-0 | |
| Black Front R | All | 283057-8 | |
| Black Rear L | All | 283060-2 | |
| Black Rear R | All | 283061-0 | |
| Cargo Mat | 245/265 | 283539-5 | |

Volvo of America Corporation reserves the right to change prices, colors, materials, specifications and also discontinue items, without prior notice.