

VOLVO

245/265



VOLVO

The Big Volvo Estate cars

This brochure covers the specific benefits of the big Volvo Estate cars. More detailed information on the traditional Volvo virtues – quality, durability, reliability and safety – can be found in the Volvo 244 and 264 Series brochures, available from your local Volvo Dealership.

Major Developments for 1981
The 1981 models incorporate many new developments, probably the most noticeable being the redesigned rear end (see front cover) which includes

a wrap around light cluster containing rear brake lights, reversing lights, indicators and fog lights. These are clearly visible from the side as well as the rear. The rear safety bumper is now integrated with the body, and wraps around to give greater protection. There are also major changes at the front, which incorporates a new grille, new headlights, wrap around side lights and indicators and an integral wrap around safety bumper. GL and GLE models also have a front spoiler which

contributes further to the improved aerodynamic shape of the car. The changes to the front and rear are complemented by a redesign of the 'glass' area of the car which has the overall effect of making the 1981 models appear lighter, slimmer and more elegant.

Inside the 1981 models the major change is a completely new dashboard, modelled on the famous 'black' Volvo dashboard but with even clearer instrumentation, improved positioning of controls and

greater storage facility. However, the unique features of the Volvo Estates are untouched. There are still five seats, 42 cu. ft. of space behind the rear seat, over 70 cu. ft. with the seat down, 6 ft. plus cargo area, over 2 cu. ft. of concealed under floor storage, easy access and loading through the rear door, attachment points for fastening down goods, 30 cwt. towing capacity, tight 32' 2" turning circle, high ground clearance and rear wiper/washer system.

The Choice is Yours
There are five models in the Volvo Estate Car Range; the 245 DL, 245 GL, 245 GLE, 265 GL and 265 GLE, which are described on the following pages. A guide to the various specifications and a check list of standard equipment appear at the back of this brochure in order to assist you in choosing the combination appropriate to your needs.



Traditional Volvo comfort

Inside, you'll find the estate cars offer you all the comfort and facilities for which Volvo is renowned. Take the seats, for instance. There's more to comfort than just sinking into deep soft cushions. Seats should be soft, yes, but still firm enough to provide adequate support even on long trips.

The widely acclaimed Volvo driver's seat is the result of extensive research and co-operation between Volvo designers and orthopaedic specialists. It has a unique lumbar support, the seat cushion and backrest are electrically heated and the element switches on automatically at temperatures below 14°C.

The seat can also be raised or lowered by levers to help you find **your** ideal position. Your rear seat passengers ride in comfort as well – the seats are well shaped and have seat belts as standard, and the leg room is exceptionally good.

The car feels light, precise and easy to handle (power steering is standard on 265 GL/GLE).

All-round visibility is excellent – a full 91% – and washers/wipers, effective demisters and defrosters, electrically heated rear window and interior adjustable, anti-dazzle door mirrors make sure you keep that visibility at all times.

The new dashboard has an impressive array of instruments, including quartz clock and tachometer. All controls are within easy reach. From the moment you sit down until you leave the car, the system monitors all functions and signals tell you if anything requires attention. For example, a "Fasten seat belt" light flashes a reminder, or a warning buzzer sounds if you leave your headlights on.

The cargo area is colour matched to the rest of the interior. Using its maximum capacity is simple. One lever enables you to tip the seat cushion forward with ease; a second mechanism on the back of the seat allows you to fold it down.





The 1981 Range

With each model offering so much potential it is important that you understand the differences between them so you can choose the estate car to suit your individual needs.

245DL

Powered by a 2.1 litre carburettor engine developing 107hp, 4 speed manual gearbox or 3 speed automatic, cloth upholstery, pile carpeting, halogen headlights, rev counter, headlamp wipers/washers, rear wiper/washer, day running lights, heated driver's seat, interior adjustable door mirrors, integral rear fog lights.

245GL

Also powered by the 2.1 litre carburettor engine but has an even higher standard specification than the DL, including overdrive on 4th gear for additional fuel economy, tinted glass, metallic paint and front spoiler.

245GLE

Higher performance B21E fuel injection engine, with transistorized ignition, developing 123hp, leather upholstery, centre armrest on rear seat, intermittent rear wipe facility, electric front windows, metallic paint, tinted windows, overdrive, front spoiler.

265GL

The 265 models are luxury estate cars. Their power is supplied by the Volvo B28E engine which has recently been developed to provide 155hp. This engine utilizes fuel injection and transistorized ignition. Standard features include power steering, metallic paint, tinted glass electric front windows, leather upholstery, central locking and front spoiler.

265GLE

On top of the luxury GL specification the GLE has air conditioning, electric windows all round, and electrically operated door mirrors.

Loading any of the five big Volvo estates is very easy, the loading level is only 23" above the ground and there is no step in the way. The tailgate opening is 3' 8" wide and the two gas struts make the rear door easy to handle and safe.

Volvo's Standards

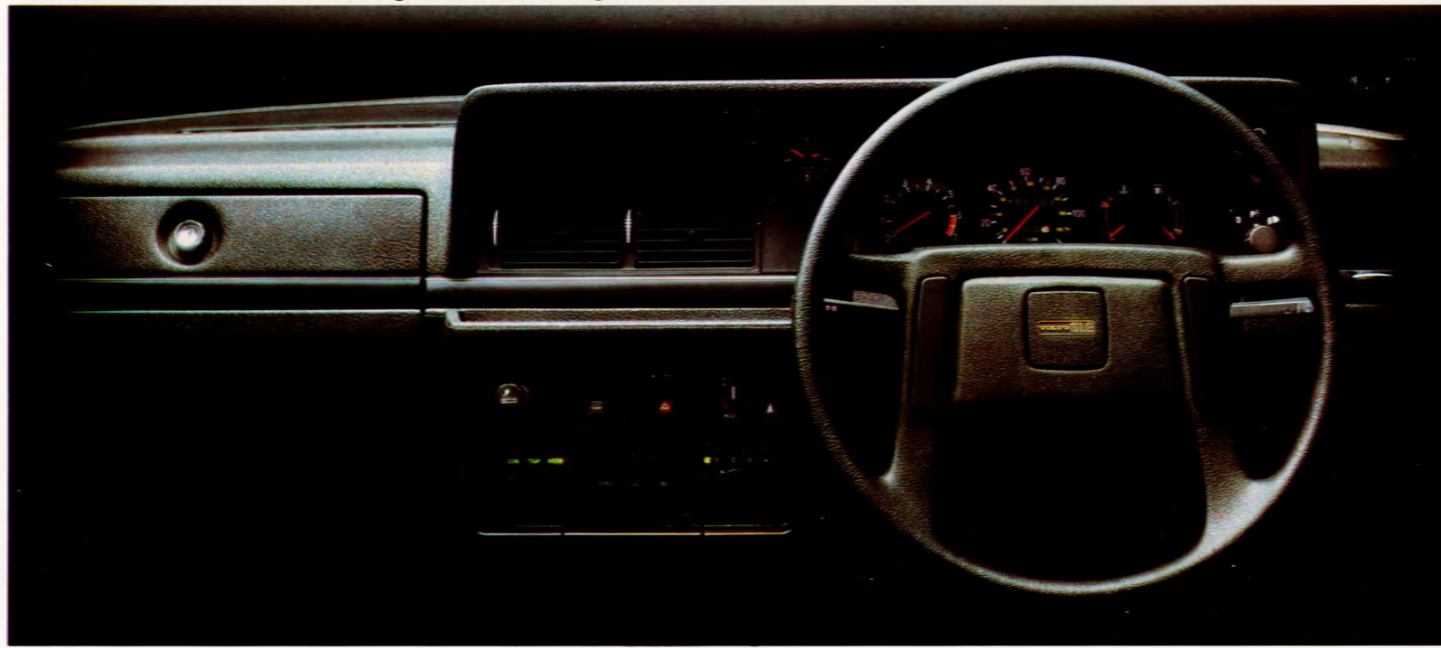
The big Volvo estate cars include as standard a long list of equipment, some of which are designed to make driving easier and safer, whilst others give greater comfort and convenience. Some of the more important features are illustrated here.

Heated driving seat standard throughout the big estate car range.

Door mirrors adjustable from the inside (electrically operated on the 265GLE).



The new Volvo dashboard, including rev counter and quartz clock - standard on all models.



Electric windows, front only on 245GLE/265GL, rear windows too on 265GLE. Controlled from a panel on the driver's arm rest.

The new design wrap-around rear light cluster.



Powerful rear wipe/wash system.



Power steering is standard on the 265GL/GLE.



Central locking, a convenience feature on the 265GL/GLE.

The concealed 2 cu. ft. underfloor area is ideal for valuables.

Tailor your car to your individual needs

Volvo Accessories - for the Individualist

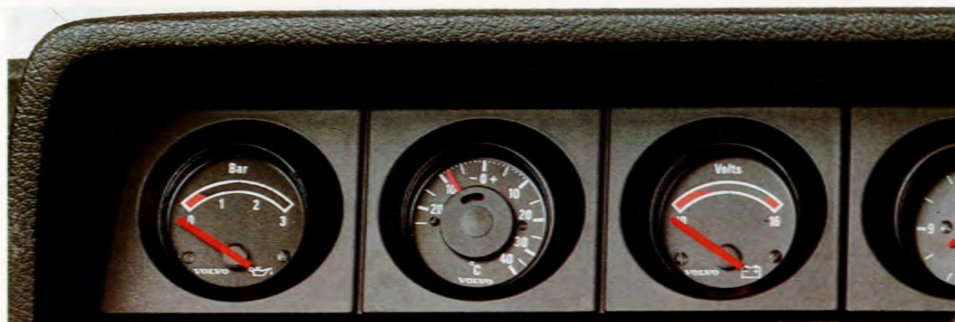
Volvo estate cars have extremely high standard specifications. But every Volvo owner is an individual with his own particular motoring needs, for example, if you have a young family you need child safety equipment and if you have a large family, possibly an extra rear seat. If you own a caravan or boat you need specialist towing equipment.

This section of our brochure illustrates some of the extensive range of Volvo accessories which enable you to tailor your car to individual needs.

Accessories for Every Need

All Volvo accessories are manufactured to the same high quality standards as the car. They are designed to complement the style of the car to avoid the 'add-on' look projected by many non-Volvo accessories. And because they are developed by Volvo, fitting has been made as quick and easy as possible.

Ask your Volvo dealer for details of the full range of accessories.



The 1981 dashboard has special provision for additional instruments to be fitted. Instruments available include the oil pressure gauge, ambient temperature gauge and voltmeter illustrated here.



Volvo Sound

In conjunction with one of the world's leading radio manufacturers, Volvo has developed a comprehensive range of high quality in-car audio equipment. The stereo radio/cassette player and rear speakers shown here are just part of the Volvo Sound range.



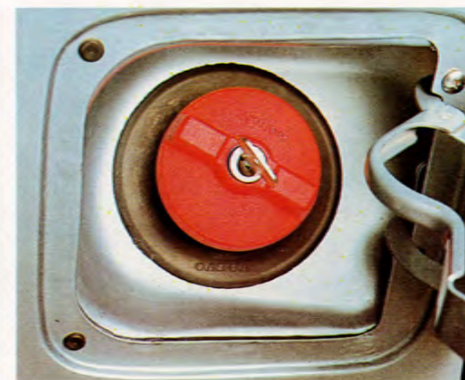
Volvo's range of Senator seat covers are faced with high quality, foambacked plush material with nylon velour side and rear panels for easy fitting. Supplied in complete sets for front and rear seats in a choice of colours to complement the interior trim. Matching head restraint cushions are also available in pairs.



This rearward facing extra rear seat turns your Volvo estate into a seven-seater. Especially suitable for children, it is equipped with head restraints, three point seat belts and armrests. Upholstered in easy-to-clean black or beige vinyl, it folds away under the cargo area floor when not in use.



A new type of floor covering are these die-moulded, thermoplastic mats. Their raised edges prevent dirt and water getting under them and the tailored fit and spined base effectively anchor the mats in place. Supplied in complete sets for front and rear.



To prevent pilferage or contamination of valuable fuel, fit this strong lockable tank cap. The cap is specially designed so that it cannot be dislodged, even in the event of a crash.



Quick and easy to fit to either wing without drilling the bodywork, the Volvo caravan mirror affords an excellent rear view.

Volvo's space-saving fuel can fits snugly inside the spare wheel. Its capacity is 5 litres (1 gallon approximately).



Self-adhesive bumper stripes reflect light at night. Complete set for front (white) and rear (red).



Child Safety

Cars are designed primarily for adults but at Volvo we believe that young children too have the right to travel in comfort and safety. The tests shown here, part of a continuous and detailed Volvo child safety research programme, illustrate all too clearly what happens to

an unrestrained child in a crash. In a head-on collision at 31 mph a child weighing 44 lbs will be thrown forward with a force of nearly 2 tons.

From the results of this research programme Volvo has developed a range of child safety equipment. The equipment

includes a carrycot restraint system and a unique child safety cushion which enables the 6-12 year old to use the standard adult seat belt.



With fuel economy such an important consideration, a roof spoiler is a 'must' when towing a caravan. By improving the aerodynamic line of the rig it reduces wind resistance and can improve fuel economy.



When towing or carrying a heavy load, a levelling system will maintain the car's normal level, comfort and stability, preventing the headlights from dazzling oncoming drivers and the car from 'bottoming' on rough roads. Choice of a

'manual' system using a garage air-line or a 'finger-tip' system using a dash-mounted control panel to operate a built-in compressor to inflate or deflate the special rear shock absorbers.



A recent addition to the accessory range are these powerful auxiliary lamps. Two 186 mm fog or spot lamps are supplied in complete kits including halogen bulbs, wiring, switch and fitting brackets.



A steel dog guard turns the cargo area into a 'kennel on wheels'. It can be fitted behind the front or rear seats.



The sturdy, tubular steel tow bar will pull a load of 3,300 lbs (1500 kg) as will the alternative 'swing away' version.



Alloy wheels reduce your car's unsprung weight and increase brake cooling. This 25 spoke 'sunburst' design polished aluminium alloy wheel is available with either a small (as illustrated) or large hub cap.



Light and strong, this aluminium roof rack has an enormous 80" x 46" load platform which enables you to use the

full carrying capacity of your Volvo estate (220 lbs). A front spoiler is fitted to minimise noise and wind resistance.

Ensure your Volvo lives up to its reputation

The Volvo car is renowned throughout the world for its quality. There are many reasons why that reputation is fully justified but the most important is the quality of the parts from which the car is built - genuine Volvo parts.

Volvo's Quality Standards
The quality standard is set when the Volvo designers first lay down the specifications required for the part—and every single part in the car, however insignificant it may appear, is specified to the same high standard. For example, the company which makes valve springs for Volvo also supplies one third of the world's automotive manufacturers. These springs undergo a 24 hour compression test at 100°C. Most companies accept a settling of 7-8% but the standard Volvo sets is a settling of only 3%, a requirement which verges on the impossible. By simply looking at the Volvo spring you can see no difference but in performance and life expectancy the difference is great.

The Development of Genuine Volvo Parts

From the Volvo specifications pre-production samples are made. The samples are comprehensively tested both in the laboratory and on the test track. Only when these vigorous tests have been passed can production begin and even then the production process is subject to continuous scrutiny by quality control engineers.

A good example is the Volvo brake pad. Like valve springs, you can look at two brake pads and they will seem identical, but Volvo tested no less than 268 different pads on computer controlled 'driving' rigs and on cars fitted with special torque wheels before they were satisfied that their standards had been achieved.

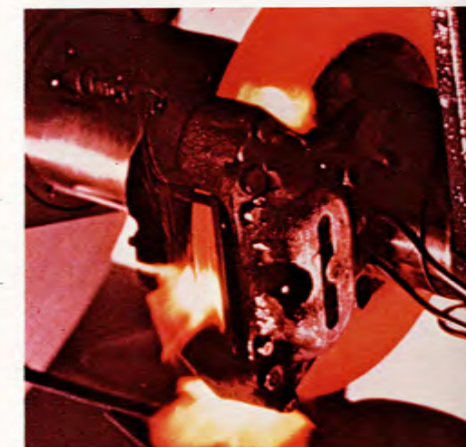
The Assurance of Volvo Quality

It may well be that some other parts match Volvo parts in quality, but without sophisticated and expensive test equipment there is no way that you can tell. The genuine Volvo part brings you the assurance of quality, the certainty of perfect fitting and the guarantee that the safety and reliability originally built into your Volvo will be retained.

The Reassurance of Your Volvo Dealer

It is just as important that the Volvo parts are fitted, and your Volvo is regularly serviced, by your local Volvo Dealer. He has been trained by Volvo and has the parts, tools and the knowledge to ensure that your Volvo meets the demands you place on it and the value of your car is fully protected.

Your local Volvo Dealer is one of a strategically placed network of 250 in the UK.



Technical information

Engine	245 DL	245 GL	245 GLE	265 GL/GLE
Designation	B21A	B21A	B21E	B28E
Configuration	In line 4	In line 4	In line 4	V6
Displacement (cm ³)	2127	2127	2127	2849
Max. Output kW DIN at r/s (hp DIN r/min.)	79/92 (107/5500)	79/92 (107/5500)	90/92 (123/5500)	114/90 (155/5500)
Max. torque Nm DIN at r/s (kpm DIN r/min.)	170/42 (17.3/2500)	170/42 (17.3/2500)	162/58 (16.5/3500)	230/50 (23.4/3000)
Compression ratio/Octane rating	9.3:1/98	9.3:1/98	9.3:1/93	9.5:1/97-98
Electrical System				
Alternator rating/Battery capacity	55A/60Ah	55A/60Ah	55A/60Ah	70A/70Ah
Ignition system	Breakerpoints	Breakerpoints	Contactless, transistorized	Contactless, transistorized
Steering Gear				
Rack and pinion. Split steering column of safety type. Ratio	21.3:1	21.3:1	21.3:1	17.2:1 Power assisted
Turning Circle	9.8 (32 ft. 2 in.)	9.8 (32 ft. 2 in.)	9.8 (32 ft. 2 in.)	9.8 (32 ft. 2 in.)
Wheels and Tyres				
Tyres	185SR	185SR	185SR	185SR
Rims	5.5 J-14"	5.5 J-14"	5.5 J-14"	5.5 J-14"
Brakes				
Front/rear	Disc/disc	Disc/disc	Disc/disc	Disc/disc
Cooling System				
Frost-proofed and sealed. Volume (L./pts.)	9.5/16.6	9.5/16.6	9.5/16.6	10.9/19.2
Fuel Tank				
Volume (L./galls.)	60/13.2	60/13.2	60/13.2	60/13.2
Transmission				
Manual gearbox	4-speed	4-speed with o/drive	4-speed with o/drive	4-speed with o/drive
Automatic	3-stage torque converter	3-stage torque converter	3-stage torque converter	3-stage torque converter
Suspension				
Front	Spring strut	Spring strut	Spring strut	Spring strut
Rear	Live	Live	Live	Live
Weights / capacity				
Gross weight, kg/lbs	1950/4295	1950/4295	1950/4295	1950/4295
Permissible trailer weight kg/lbs	1500/3307	1500/3307	1500/3307	1500/3307
Cargo area capacity cu. ft.—rear seat up	42.1	42.1	42.1	42.1
—rear seat down	75.3	75.3	75.3	75.3

Instrumentation and Controls

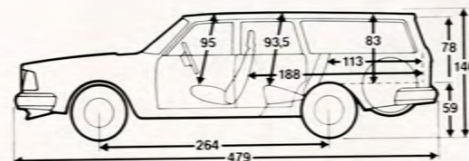
Padded dashboard, rheostat controlled instrument lighting. Six figure mileometer, tripmeter, fuel gauge and coolant temperature gauge. Warning lamps for alternator charging, oil pressure, choke, main beam, handbrake and brake failure.

Tachometer, quartz clock, bulb integrity sensor, audible and optical signs for turn indicators, glove box light, combined steering wheel lock and ignition switch. Centre console houses controls for electrically heated rear window, 4 way hazard warning flashers; seat belt reminder; controls for heating and ventilation; cigar lighter; ashtray; space for radio. Stalks on steering column for turn indicators, main/dip beam, windscreen wiper/washers, headlamp wiper/washers, rear screen wiper/washer.

Warranty

12 month unlimited mileage warranty.

The factory reserves the right to make changes at any time, without notice, to prices, colours, materials, equipment, specifications and models, and also to discontinue models.



Standard equipment

	245 DL	245 GL	245 GLE	265 GL	265 GLE
Front seats with adjustable lumbar support	●	●	●	●	●
Electrically heated rear window	●	●	●	●	●
Vertical adjustment of driving seat	●	●	●	●	●
Power assisted brakes	●	●	●	●	●
Disc brakes all round	●	●	●	●	●
Bulb integrity sensor (showing bulb failure)	●	●	●	●	●
Brake circuit failure warning	●	●	●	●	●
Fasten seat belts reminder, front and rear	●	●	●	●	●
Illuminated rear ashtray	●	●	●	●	●
Ignition/Lights buzzer warning	●	●	●	●	●
Quartz clock	●	●	●	●	●
Halogen headlights	●	●	●	●	●
Reversing lights	●	●	●	●	●
Inertia seat belts front and rear	●	●	●	●	●
Child-proof rear door latches	●	●	●	●	●
Fuel tank with safety location	●	●	●	●	●
Stepped bore brake master cylinder	●	●	●	●	●
Radial ply, steel belted tyres	●	●	●	●	●
Intermittent windscreen wipers	●	●	●	●	●
Headlamp wipers/washers	●	●	●	●	●
Rheostat controlled instrument lighting	●	●	●	●	●
Laminated windscreen	●	●	●	●	●
Trip-meter	●	●	●	●	●
Hazard warning lights	●	●	●	●	●
Vanity mirror	●	●	●	●	●
Storage recesses in doors (front)	●	●	●	●	●
Cigar lighter	●	●	●	●	●
Mud flaps	●	●	●	●	●
Full carpeting	●	●	●	●	●
Day/night rear view mirror	●	●	●	●	●
Luggage area lighting	●	●	●	●	●
Courtesy light operating on all four doors	●	●	●	●	●
Energy absorbing bumpers	●	●	●	●	●
Map pockets behind front seats	—	—	●	●	●
Side impact protection	●	●	●	●	●
Tachometer	●	●	●	●	●
Rear window wiper/washer	●	●	●	●	●
Tinted glass	—	●	●	●	●
Metallic paint	—	●	●	●	●
Overdrive (on manual gearbox)	—	●	●	●	●
Leather upholstery	—	—	●	●	●
Cloth upholstery	●	●	—	—	—
Fuel injection	—	—	●	●	●
Intermittent rear wiper	—	—	●	●	●
Electrically heated driver's seat	●	●	●	●	●
Power steering	—	—	—	●	●
Engine bay light	●	●	●	●	●
Electrically operated windows	—	—	front only	front only	●
Air conditioning	—	—	—	—	●
Stereo speakers/front door	—	—	—	●	●
Electrically operated door mirrors	—	—	—	—	●
Interior adjustable door mirrors	●	●	●	●	—
Rear seat centre armrest	—	—	●	●	●
Central locking	—	—	—	●	●
Front spoiler	—	●	●	●	●
Rear fog lights	●	●	●	●	●

All models can be obtained with automatic transmission. Power steering is available on special order for all 245 models.