

VOLVO WAGONS



F

errying legions of children; toting luggage, antiques and cargo of all description and, in general, being the answer whenever family transportation is the question - the station wagon works hard.

Performance in the face of such harsh reality has earned

Volvo the unique reputation as the wagon builder of choice. Thoughtfully designed, ruggedly constructed, our wagons have earned their reputation by satisfying the tens of thousands of families who, each year, make

Volvo their first choice.

Part of that satisfaction comes from Volvo's elevation of the wagon concept through meticulous attention to detail and commitment to quality engineering.

A world class wagon must tow tirelessly, accommodate all family members and provide cavernous usable cargo space. Only Volvo wagons deliver all this with the luxury and performance of a great sedan.







Power and performance only begin to define the distinctive character of the 960. The richly appointed interior and state-of-the-art safety design, featuring dual air bags, elevates the 960 to a higher level. It stands as a singular expression of excellence in luxury wagon design; it sets a benchmark, as well, for exceptional value in its class.

Whether towing 3300 lb. (1500 kg.) with ease or navigating winding roads with spirited agility, the 960's thoroughbred breeding is evident.

To tailor driving pleasure to the demands of the road conditions and the mood of the driver, the 960 is equipped with Volvo's four-speed automatic transmission with selectable driving modes. By

choosing among sport, economy and winter modes, drivers can select the drive train program best suited to their desires and the driving situation.

Nivomat™ load-leveling shock absorbers are designed to ensure that any load within the recommended capacity does not alter the vehicle's ride height.

The assurance of ABS four-wheel disc braking, a traction enhancing locking differential and a myriad of performance and safety engineering features contribute to

a high level of control that is reassuringly predictable. For the 960 owner this translates into the inspiring performance and peace of mind that is the signature of the luxury 960 series.



960



Leather-faced, orthopedically designed seating with power, heated front seats leave occupants undiminished even after long trips. Memory settings for three different drivers are provided, as well.

All controls are positioned to be natural extensions of the body. The adjustable steering column, automatic climate control, premium sound system with large format controls, power sunroof and other amenities all contribute to a driving environment of extraordinary comfort, quiet and well being.

The convenient 60/40 split rear seat design in the 960 wagon permits considerable latitude in tailoring the use of space. Handy cargo tie down rings and lockable security area bring further organization to cargo stowing.

Volvo's commitment to leadership in safety design is evidenced by the 960's driver and front passenger air bags, unique Side Impact Protection System and three-point seat belts for all seating positions.



940

Friend, servant, guardian, companion, the family wagon is called upon to be so many things. Its uncomplaining performance in the face of such demands earns it special recognition as a valued member of the family. The Volvo 940 answers that call with a high value wagon that demands no compromise.

With up to 74.9 cu. ft. of available cargo space; husky 3300 lb. (1500 kg.) towing capacity and optional third seat for children*, the 940 is a work horse at your service.

The 940 conveys the reassuring sense of a large car, while retaining remarkable maneuverability and fuel efficiency. With the 940 comes the protection of Volvo's driver's side Supplemental Restraint System, front seatbelt pretensioners and a Side Impact Protection System. Children also benefit from rear door safety locks, three-point seat belts and padded head restraints in all seating positions and a special center-rear child booster cushion.

For those wishing to enjoy even more in their 940 wagon, the 940 luxury option package offers alloy wheels, power sunroof, leather-faced upholstery and a premium sound system.

** For children age three and over weighing between 50 lb. and 80 lb. (23 kg. - 36 kg.) and between 46 in. and 54 in. (117 cm. - 137 cm) in height.*





940

A ribbon of blacktop snakes through the countryside. Powerful and sure-footed, Volvo's Turbo wagon meets the challenge and leaves no doubt that this is a performance car.

The tuned suspension hugs the corners. The turbocharged, intercooled, overhead cam engine powers out of the curves. Hills quickly recede in the mirror. Spirited, stirring - and amazing, considering this 940 is a wagon with its cargo area packed full.

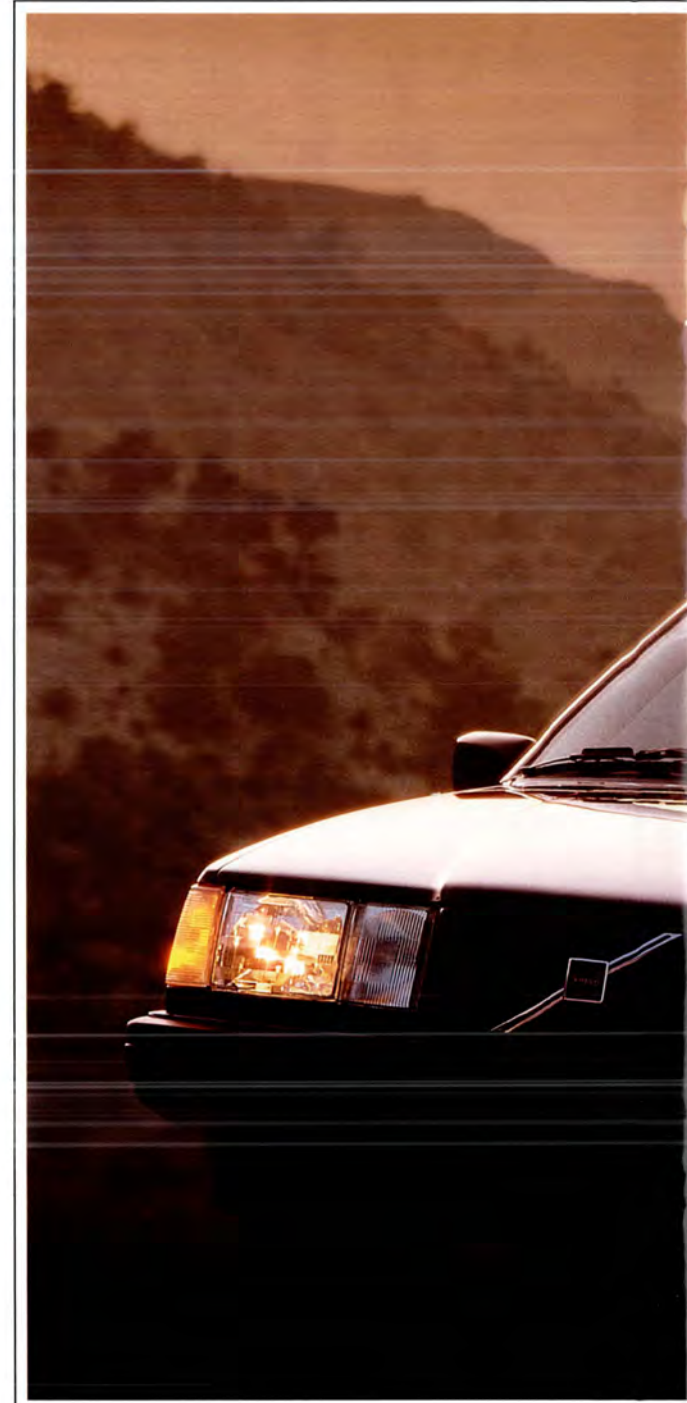
Integral fog lights, distinctive egg crate grille and high speed rated 195/65R15 tires on alloy

wheels enhance the 940 Turbo option package.

Volvo's Turbo wagon delivers a unique and thoughtful blend of utility and performance.

Orthopedically designed seating welcomes you into the spacious interior. Ergonomically refined instrumentation, power sunroof and 6-speaker premium audio system with full-logic cassette contribute to a driving environment of exceptional luxury.

Driving the 940 Turbo wagon rewards you with performance, comfort, convenience and Volvo safety engineering.





940



Designed to meet real life demands, the 940 wagon expands your options for allocating space efficiently with a new easy-fold split rear seat with retractable head restraints. For added convenience, gas struts raise the rear hatch to an overhead position that shields you from the elements while providing unrestricted access to the illuminated, spacious, fully carpeted cargo area.

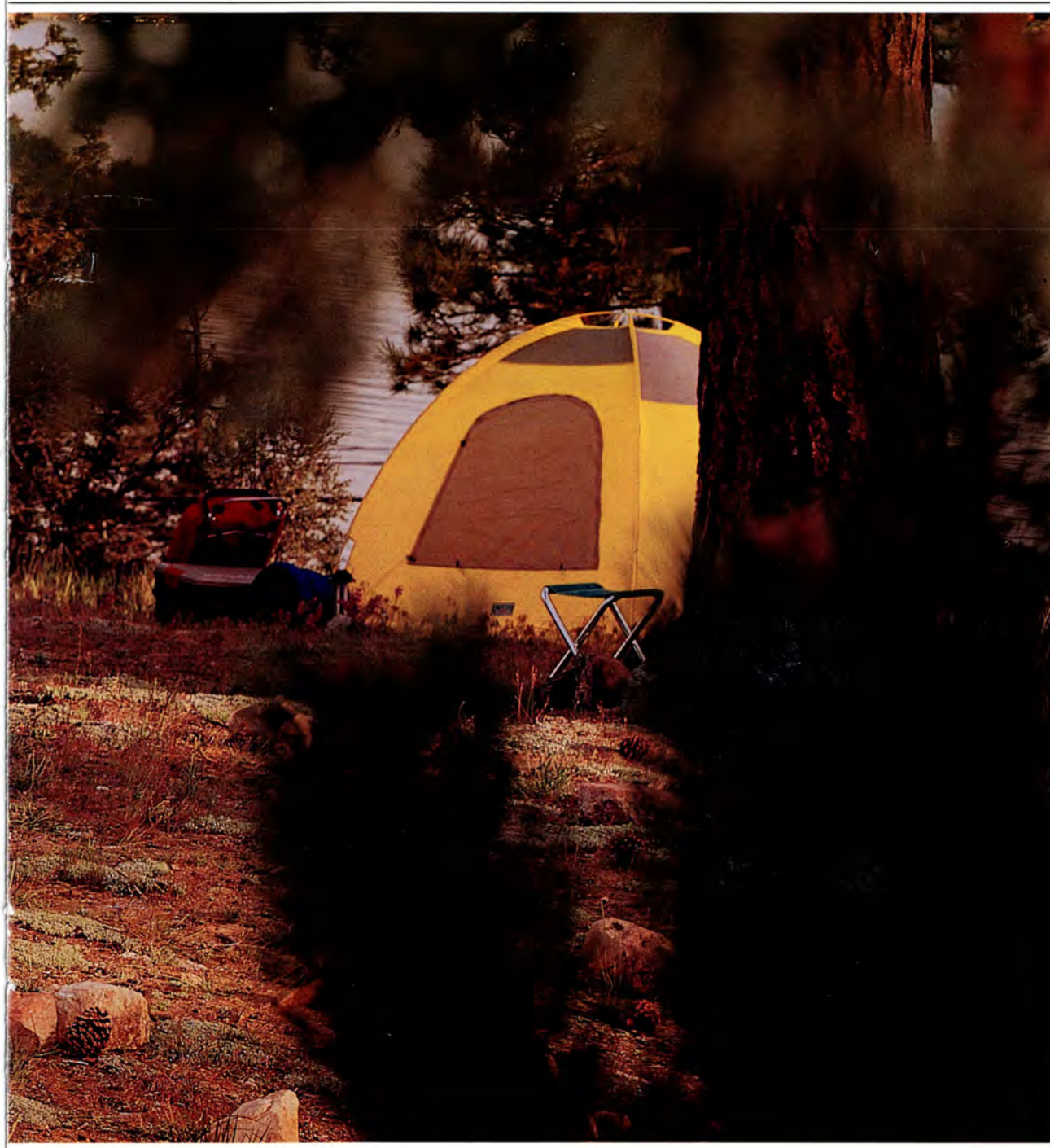
Seating, contoured to accommodate and support the body, is available in plush fabric or leather. The power driver's seat provides memory position for three drivers. All seating positions benefit from the protection of Volvo's 3-point seat belt and anti-submerging seat design. The center-rear position provides an integrated child's booster cushion. Child safety benefits, as well, from rear door safety locks and a rear power window lock-out switch.

Volvo's 940 wagons include power/heated mirrors and a rear window wiper/washer for superior visibility, central locking for added security, cruise control for comfort and ozone friendly CFC-free air conditioning for a more comfortable environment inside and outside your Volvo.



240





Whether effortlessly navigating the path to the weekend getaway or tirelessly shuttling people and things during a typical family weekday, the Volvo 240 wagon provides the perfect complement for the active family. With the rear seat folded down its generous 76 cu. ft. of fully carpeted, easily accessible cargo space makes hauling and loading easier.

The surety of its proven technology and no nonsense engineering has established the Volvo 240 wagon as a benchmark for family value and convenience. For six years in a row, the Complete Car Cost Guide* has rated the 240 wagon as one of the "Best overall value in its class".

Numerous refinements contribute to a level of drivability not associated with wagons. Its compact 32.2 ft. turning circle lets the 240 maneuver where other wagons and sport utilities cannot. ABS four-wheel disc brakes, power-assisted rack and pinion steering and driver's side air bag contribute to an overall predictability and peace of mind that makes the Volvo 240 wagon a family favorite.

* © 1992 Intellichoice Inc., San Jose, Calif.

240



Upon entering the Volvo 240 wagon, all occupants enjoy a tastefully appointed ergonomically engineered interior. Orthopedically designed seats support the body comfortably. Adjustable lumbar support and optional heated front seats provide all-season driving pleasure.

A six-speaker, AM/FM stereo cassette sound system; air conditioning; power windows; power locks and dual power/heated mirrors top an extensive list of standard features on the 240.

Swinging up and above, the wagon rear hatch shelters during inclement weather. The square opening to the spacious cargo area offers unrestricted access and easy loading. Fully carpeted and illuminated, the cargo area provides cargo tie down rings for convenience, a lockable hidden storage area for security and the availability of an optional third seat with integral head restraints and three point seat belts for expanded seating capacity.*

** For children age three and over weighing between 50 lb. and 80 lb. (23 kg. - 36 kg.) and between 46 in. and 54 in. (117 cm. - 137 cm) in height.*



Space vehicles for today and the 21st Century.

Through thoughtful design and precision engineering Volvo wagons combine the performance and comfort of world class touring cars with exceptional carrying capacity and convenience.

All Volvo wagons exemplify our commitment to efficient space utilization and ergonomic interior design that, along with performance and comfort, define the character of a Volvo wagon.

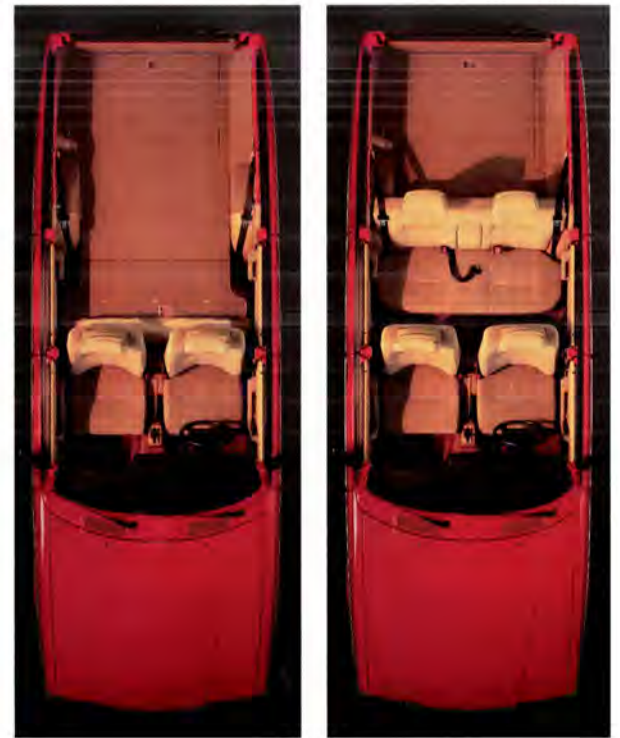
Space to be usable must be accessible. Assisted by gas filled struts, the rear hatch of all Volvo wagons lifts with minimum effort.

Opened, the hatch affords unrestricted access to the wide cargo area cross-section. The flat floor design adds to the convenience of the low lift height for ease of loading. Fully carpeted and illuminated, the cargo area benefits from strategically positioned tie down rings that simplify securing. For added security, a lockable storage area beneath the cargo floor, is provided.

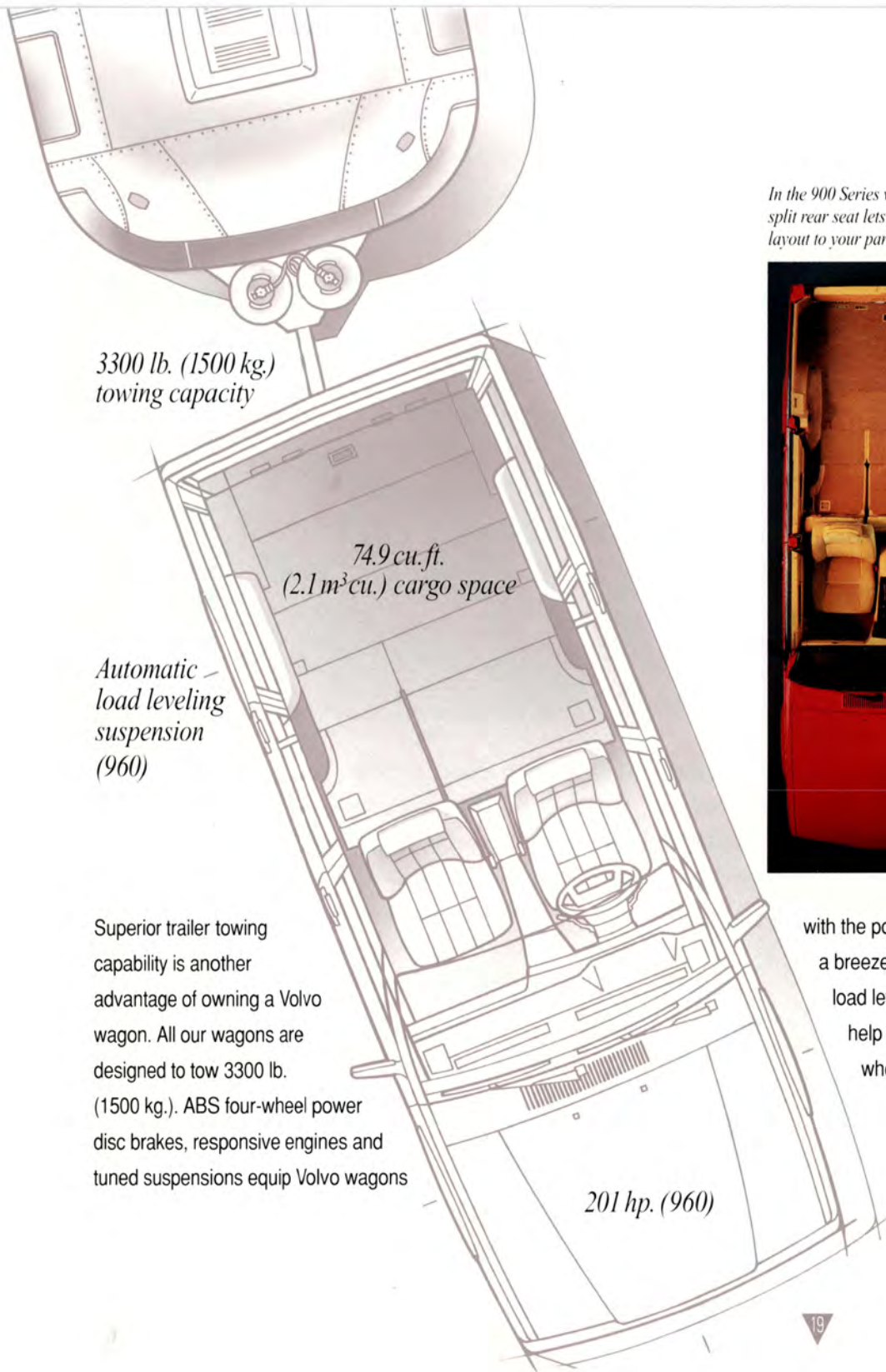
The rear seats fold down effortlessly to utilize the full cargo capacity. Volvo 940 and 960 wagons offer the added convenience of the 60/40 split rear seat. This highly flexible design lets you tailor the interior layout to your particular needs. A split rear seat design permits the versatility of seating one, two or three people with the remaining space available for storage. And new for 1993, all seating positions enjoy the protection of a Volvo three-point seat belt and integral padded head restraint.* The two outboard head restraints retract automatically when the seats are folded down.

At the wheel of a Volvo wagon, the driver enjoys exceptional visibility. Volvo's signature rear wiper/washer helps maintain the broad field of vision afforded by a large rear hatch glass. With the same exterior dimensions as a Volvo sedan and the smallest turning circle of any wagon in its class, a Volvo wagon offers extraordinary maneuverability. This translates into easier parking; easier turning in tight places and greater overall driving pleasure.

The cargo area of the 240 is designed to minimize structural intrusion into the floor area to ensure easy loading.



**240 wagon features a lap belt in the rear center position*



3300 lb. (1500 kg.)
towing capacity

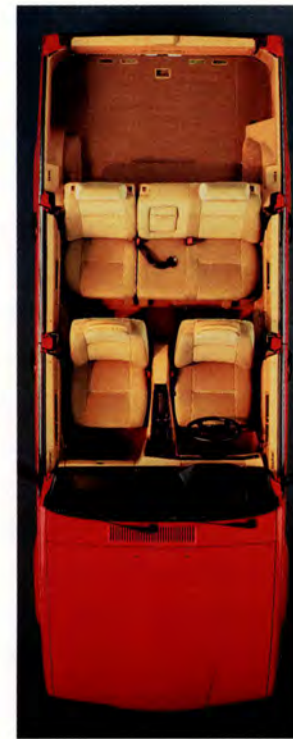
74.9 cu. ft.
(2.1 m³ cu.) cargo space

Automatic
load leveling
suspension
(960)

Superior trailer towing
capability is another
advantage of owning a Volvo
wagon. All our wagons are
designed to tow 3300 lb.
(1500 kg.). ABS four-wheel power
disc brakes, responsive engines and
tuned suspensions equip Volvo wagons

201 hp. (960)

*In the 900 Series wagons, a 60/40
split rear seat lets you tailor the interior
layout to your particular needs.*



with the power and handling to make towing
a breeze. Volvo's 960 wagon adds Nivomat™
load leveling shock absorbers designed to
help maintain optimum ride height, even
when the car is fully laden.

Dynamic Safety Features

As a driver or passenger in a new Volvo wagon, you can take comfort in knowing that we, at Volvo, continue to demonstrate an unwavering dedication to the advancement of automobile occupant safety.

Minimizing injury from a collision describes only part of Volvo's approach to occupant safety design. Equally important is a vehicle's ability to avoid a collision. Volvo defines these two cornerstones of occupant protection engineering as Dynamic Safety - The ability to avoid a collision, and Passive Safety - The ability to prevent injury from a collision.

Certainly the best way to prevent accident related injury is to avoid the accident. Four-wheel power disc with ABS, standard on all Volvo wagons, equips the driver with exceptional stopping power and enhanced vehicle control during maximum braking. ABS helps assure controlled stopping, even when braking hard on a slippery road surface.



Predictability plays a crucial role in sound dynamic safety design. A vehicle that responds with sure-footed consistency gains the driver's confidence and sharpens the driver's ability to react effectively when

the unexpected occurs.

Power assisted rack & pinion steering faithfully communicates the feel of the road. MacPherson struts deliver precision tracking while complementing the reflexes of the rear suspension. The result is a nimble, responsive road car that confidently responds to driver input with reassuring consistency.



Passive Safety Features

Volvo's steel safety cage construction surrounds the occupants with a rigid protective enclosure designed to maintain its structural integrity in the event of a collision.

In a frontal collision energy absorbing structures are designed to deform and absorb a portion of the energy of impact.

All Volvo 900 series wagons help protect with a three-point seat belt and padded head restraint for all five seating positions including the center rear. Front seat belts offer pretensioners designed to automatically tighten the belt in a frontal impact. The 240 provides three-point seat belts and head restraints for the outboard seating positions and a traditional lap belt for the

center rear position.

Seats are designed to work in conjunction with seat belts to maximize seat belt effectiveness. Volvo's anti-submarining seat design and seat belt placement help prevent an occupant from sliding down and forward due to a collision impact.

Volvo's Side Impact Protection System represents a major advancement in the protection of occupants involved in vehicle to vehicle side impacts. Standard equipment on



**Sedan body shown for reference*

all 940 and 960 wagons,* this innovative system of reinforced body elements is designed to help absorb the energy of side impact through structural members in the sills, floor, pillars, roof and doors.



Passive Safety Features

All Volvos are equipped with a driver's side air bag. All 900 series models include automatic seatbelt pretensioners for both driver and front passenger, and the 960 adds a passenger side air bag, as well. The air bag is designed to deploy in the event of certain frontal or front angular impacts. Each is engineered to inflate in milliseconds to help dissipate the energy of the occupant's forward momentum.

An air bag is often referred to as a Supplemental Restraint System. The word supplemental calls attention to the important fact that an air bag does not, by itself, make a car safe. An air bag should be considered one part of a total safety



960 passenger side air bag



system, a system in which seatbelts play a fundamental role. All Volvo wagons are designed to provide exceptional occupant safety.

Volvo, in designing its wagons, never forgets the most important cargo, the occupants.

Support Programs

1993 Volvo Warranty Coverage

Volvo's limited new-car warranty provides comprehensive coverage for 3 years/50,000 miles. Additional warranties provide coverage for corrosion protection, seat belts, air bags, supplemental restraint systems, emissions systems, spare parts replacement, and genuine Volvo accessories. Please consult the 1993 Warranty Information Booklet for complete details covering all the 1993 Volvo models.

Volvo On Call

Volvo's roadside assistance program can provide you with emergency starts and towing 365 days a year, anywhere in North America. It includes locksmith services, trip routing and travel services. It also provides reimbursement for accommodations, should repairs be required during travel away from home.

Volvo Service Support Network

Volvo's extensive North American dealer network ensures that you can expect the very best service support wherever you go. That is one of the important reasons behind our high level of customer satisfaction. Only trained technicians, using the latest Volvo technology, work at our dealerships. They know everything we can teach them about keeping your Volvo running beautifully, year after year.

Genuine Volvo Parts

You probably never think about the thousands of parts that make up your Volvo. That's good. That's the whole point of all the rigorous quality inspections every Genuine Volvo Part must pass. From radiator hoses to critically machined gears, they are all expected to provide performance equal or superior to the parts they replace. Genuine Volvo Parts. They are more good reasons to consider Volvo for your next automobile.

VIP: The Volvo Increased Protection Plan

This extended service contract provides exceptional protection against unexpected mechanical difficulties. It allows you the flexibility to pick the plan term that best suits your driving needs.

Long after the factory warranty expires, the Volvo Increased Protection plan can pay for towing and rental expenses while a covered breakdown is being repaired. The Volvo Increased Protection plan is the only service agreement program backed by Volvo Cars of North America.

Customer Assistance

Your Volvo dealer will be happy to answer any questions you may have on the 1993 Volvo models shown in this catalog. If you require additional information, you can contact Volvo Consumer Affairs at 1-800-458-1552, Monday through Friday, 8:AM to 7:PM, Eastern Standard Time.

Some of the information in this catalog may be incorrect due to product changes which may have occurred after this book was printed. Some of the equipment described or shown may now be available only at extra cost. Before ordering, please ask your Volvo dealer to bring you up to date. The manufacturer reserves the right to make changes at any time, without notice, to prices, color, materials, specifications and models.



Dealer Installed Options

Explore Volvo's extensive line of dealer installed options and personalize your new Volvo to fit your driving needs. From armrests to roof rack systems, dealer installed options extend the functional nature of your Volvo as they add to your driving pleasure.

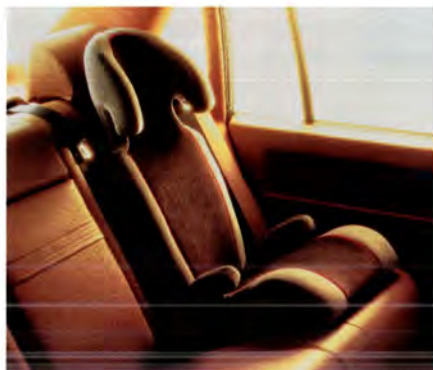
Installed by your Volvo dealer, Volvo options offer factory quality features and have been designed and manufactured to the same exacting standards as your new Volvo.

Consult Volvo's dealer installed options brochure for a complete listing.



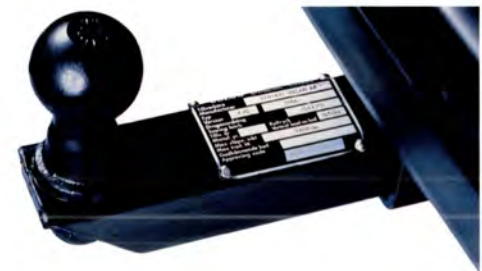
Pet and Cargo Guard - Restricts pets and luggage to cargo area.

Security Cover - Protects valuables. Retractable cover keeps valuables out of sight. It is easily removed when not in use.



Child Cushion and Backrest - Provides extra seating height for children and allows for comfortable and proper use of seat belt.

Trailer Hitch - Heavy duty construction with weight distributing design allows for towing of heavy loads up to 3300 lbs. (1500 kg.).



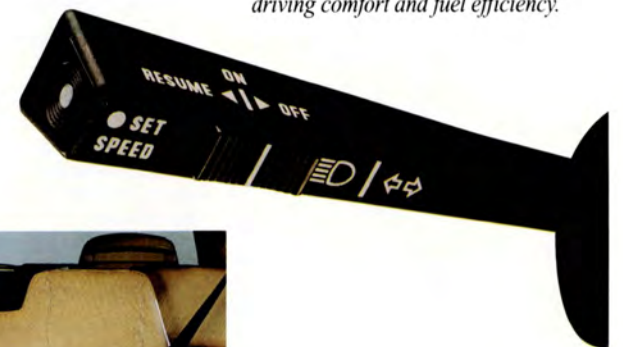
Roof Rack - Expands cargo capacity with clean, functional design and rugged construction. It holds up to 70 lbs. (31.8 kg.).



All Weather Lights - Improve visibility for added safety in inclement weather.



Cruise Control - For increased driving comfort and fuel efficiency.



Cargo Liner - High edges hold spills and dirt for ease of clean up and convenience.



Children's Seat - Adds seating capacity for two children. Provides three point seat belts and high back restraints for both positions. It folds completely flat when not in use.*

** For children age three and over weighing between 50 lb. and 80 lb. (23 kg.-36 kg.) and between 46 in. and 54 in. (117 cm.-137 cm) in height.*

Features

240

Driver's-side supplemental restraint system (air bag and knee bolster)
Anti-lock brake system (ABS)
Four, 3-point, inertia-reel seat belts; rear center lap belt
Rear fog light
Air conditioning (CFC free system)

AM/FM stereo cassette with 4 x 20 W amplifier, six speakers and anti-theft circuitry
Tinted windows with front windshield shade band
Power windows with rear window lock out
Central power door locking system, including tailgate

Dual, heated, anti-glare power mirrors
Rear-window defroster with timer
Two-speed windshield wipers with intermittent cycle
Rear windshield wiper/washer with intermittent cycle
Child-seat top-tether anchorages, rear seat (three)

Adjustable lumbar support
Heated front seats*
Four, front and rear head restraints
Fold down rear seat
Removable rear seat cushion
Front and rear floor mats
Carpeted cargo area

Cargo tie down rings
Lockable storage compartment beneath the cargo deck
Illuminated, lockable glove compartment
Front passenger visor vanity mirror
Front-door-panel storage pockets
Cargo compartment light

Interior cabin light delay
Halogen headlights**
Tool kit

* Optional in the United States; standard in Canada.

** Daytime running lamps are standard in Canada.

940

Driver's-side supplemental restraint system (air bag and knee bolster)
Side Impact Protection System
Automatic seatbelt pretensioners for driver and front seat passenger
Integrated child booster cushion in rear center armrest*
Five padded head restraints (center rear is adjustable)
Seat belts: five 3-point, inertia-reel belts
Eight-way power adjustable driver's seat with 3 position memory function

Adjustable lumbar support
Heated front seats
Front door-panel storage pockets
Front seat back storage pockets
Fold-down rear seat backs with 60/40 split; removable seat cushions and retractable outboard head restraints
Lockable, hidden compartment beneath the cargo deck
Illuminated, lockable glove box
Illuminated vanity mirror in front passenger's sun visor
Tricot plush cloth upholstery

Carpeted cargo area
Cargo tie-down rings
Tool kit
Front and rear plush floor mats
Dual, heated, power mirrors
Two-speed windshield wipers with intermittent cycle
Rear-windshield wiper/washer with an intermittent cycle
Rear-window defroster
Interior cabin light delay
Front-seat reading lights
Cargo compartment light

Warning lamps in doors
Halogen headlights**
Rear fog light
Air conditioning (CFC-free system)
AM/FM cassette stereo with anti-theft coding, power antenna, 6 speakers
Power windows with rear window lock out
Cruise control
Anti-lock brake system (ABS)
Locking differential
Tinted windows

Central power door locks, including tailgate
Prewiring for optional security system and outside ambient temperature gauge

The 940 Luxury Package (Opt #1) includes:

Twenty-spoke alloy wheels
Power sunroof with tilt and slide functions
Leather-faced upholstery
AM/FM "full-logic" cassette stereo with CD capability

940 Turbo Package (Opt #2) includes option #1 plus:

Turbocharged 2.3 liter engine with intercooler
Front fog lights
"H" speed rated 195/65 tires
Distinctive grey "eggcrate" style grille

* For children age 3 and over weighing between 50 and 80 lbs. (23 - 36 kg) and between 46 and 54 in. (117 and 137 cm) in height.

** Daytime running lamps are standard in Canada.

960

Driver's-side supplemental restraint system (air bag and knee bolster)
Front passenger's supplemental restraint system (air bag and knee bolster)
Seat belts: five 3-point, inertia-reel belts
Automatic seatbelt pretensioners for driver and front-seat passenger
Integrated child cushion in rear center armrest*
Five padded head restraints (center-rear is adjustable)

Halogen headlights**
Front fog lights
Rear fog light
Adjustable front bucket seats with lumbar support
Eight-way power adjustable driver's and front passenger's seats with 3 position memory function on the driver's seat
Heated front seats
Leather-wrapped, three position tilt steering wheel
Front door-panel storage pockets

Front seat back storage pockets
Fold-down rear seat back with 60/40 split, removable seat cushions and retractable outboard head restraints
Lockable, hidden compartment beneath the cargo deck
Illuminated, lockable glove box
Illuminated vanity mirrors in driver's and front passenger's sun visors
Leather-faced upholstery
Electronic climate control (CFC-free system)

Large format AM/FM cassette stereo with anti-theft coding, amplifier, power antenna, CD capability and 6 speakers
Power windows with rear window lock out
Power sunroof with tilt and slide functions
Cruise control
Locking differential
Anti-lock brake system (ABS)
Side Impact Protection System
Tinted windows

Central power door locks, including tailgate
Dual, heated, power mirrors
Two-speed windshield wipers with intermittent cycle
Rear-windshield wiper/washer with an intermittent cycle
Rear-window defroster
Interior cabin light delay
Front and rear reading lamps
Cargo compartment light
Warning lamps on doors
Plush front and rear floor mats

Carpeted cargo area
Cargo tie-down rings
Tool kit
Prewiring for optional compact disc changer, optional security-system and outside ambient temperature gauge

* For children age 3 and over weighing between 50 and 80 lbs. (23 - 36 kg) and between 46 and 54 in. (117 and 137 cm) in height.

** Daytime running lamps are standard in Canada.



Specifications

Engines

240

2.3 liter, single overhead cam, 4-cylinder;
Bosch electronic ignition system with knock sensor;
Bosch LH-lambda electronic fuel injection

Horsepower (SAE net): 114 @ 5400 rpm
Torque (ft./lbs., SAE net): 136 @ 2700 rpm
Fuel capacity: 15.8 US gallons (60 liters)

940

2.3 liter, single overhead cam, 4-cylinder;
electronic ignition system with knock sensor;
electronic fuel injection

Horsepower (SAE net): 114 @ 5400 rpm
Torque (ft./lbs., SAE net): 136 @ 2750 rpm
Fuel capacity: 19.8 US gallons (75 liters)

940 Turbo

2.3 liter, single overhead cam, turbocharged and
intercooled, 4-cylinder, electronic ignition system
with knock sensor, electronic fuel injection

Horsepower (SAE net): 162 @ 4800 rpm
Torque (ft./lbs., SAE net): 195 @ 3450 rpm
Fuel capacity: 19.8 US gallons (75 liters)

960

2.9 liter, double overhead cam, all alloy, 24-valve,
6-cylinder with Bosch Motronic 1.8 fuel injection,
Bosch Motronic 1.8 distributorless ignition with
knock sensor system

Horsepower (SAE net): 201 @ 6000 rpm
Torque (ft./lbs., SAE net): 197 @ 4300 rpm
Fuel capacity: 19.8 US gallons (75 liters)

Transmissions

240

5-speed manual with overdrive fifth gear*
Optional, 4-speed automatic with overdrive fourth gear

940

4-speed automatic with overdrive fourth gear

960

4-speed electronically-controlled automatic selectable
shift modes (Economy/Sport/Winter)

Suspensions

240

Front: MacPherson strut with coil springs,
hydraulic shock absorbers, stabilizer bar

Rear: Live rear axle with trailing arms,
panhard rod, coil springs, hydraulic shock absorbers,
stabilizer bar, optional locking differential

940

Front: MacPherson strut with coil springs,
hydraulic shock absorbers, stabilizer bar

Rear: Constant track live rear axle, trailing arms,
panhard rod, coil springs, gas charged shock
absorbers, stabilizer bar, locking differential

960

Front: MacPherson strut with coil springs,
hydraulic shock absorbers, stabilizer bar

Rear: Constant track live rear axle, trailing arms,
panhard rod, coil springs, gas charged shock
absorbers, stabilizer bar, locking differential,
Nivomat self leveling shock absorbers

* Not Available in California.

Tires

240

185R14T tires; 5.5" x 14" steel wheels

940

185/65R15T; all-season tires; 6" x 15" steel wheels

940 Option 1 (Luxury Package):

185/65R15T; all-season tires; 6" x 15" alloy wheels

940 Option 2 (Turbo Package):

195/65R15H; 6" x 15" alloy wheels

960

195/65R15V; 6" x 15" alloy wheels

Steering

Power-assisted rack and pinion
32.2 ft. turning circle (9.8 m)
3.5 turns, lock to lock

Brakes

240

Four-wheel, power-assisted disc brakes with
anti-lock braking system (ABS); separate
self-adjusting rear-wheel drum parking brakes

940

Four-wheel, power-assisted disc brakes; ventilated
front discs; front and rear pressure proportioning
valve, anti-lock braking system (ABS); separate
self-adjusting rear-wheel drum parking brakes

960

Four-wheel, power-assisted disc brakes; ventilated
front discs; front and rear pressure proportioning
valves, anti-lock braking system (ABS); separate
self-adjusting rear-wheel drum parking brakes

Dimensions and Weights

240

Wheelbase	104.3 in.	265 cm
Overall length	190.7 in.	484 cm
Overall height	57.5 in.	146 cm
Overall width	67.3 in.	171 cm
Front track	56.3 in.	143 cm
Rear track	53.5 in.	136 cm
Curb weight	3071-3117 lbs.	1393-1413 kg
Towing capacity	3300 lbs.	1500 kg
Cargo capacity, seat up	41.7 cu.ft.	1.2 m ³
seat down	76.0 cu.ft.	2.2 m ³

940

Wheelbase	109.1 in.	277 cm.
Overall length	190.5 in.	484 cm.
Overall height	56.5 in.	143 cm.
Overall width	68.9 in.	175 cm.
Front track	57.5 in.	146 cm.
Rear track	57.5 in.	146 cm.
Curb weight	3283-3309 lbs.	1489-1500 kg
Towing capacity	3300 lbs.	1500 kg
Cargo capacity, seat up	39.3 cu ft.	1.1m ³
seat down	74.9 cu ft.	2.1m ³

960

Wheelbase	109.1 in.	277 cm.
Overall length	190.5 in.	484 cm.
Overall height	56.5 in.	144 cm.
Overall width	68.9 in.	175 cm.
Front track	57.5 in.	146 cm.
Rear track	57.5 in.	146 cm.
Curb weight	3452 lbs.	1565 kg.
Towing capacity	3300 lbs.	1500 kg.
Cargo capacity, seat up	39.3 cu ft.	1.1 m ³
seat down	74.9 cu ft.	2.1 m ³



© 1992 Volvo Cars North America Inc., Rockleigh, NJ 07647
Volvo Canada Ltd., North York, Ont., M2H 2N7

VOLVO
Drive Safely™

Printed in U.S.A. C203 8/92 N.A.
"Drive Safely" is a trademark belonging
to Volvo Cars North America Inc.