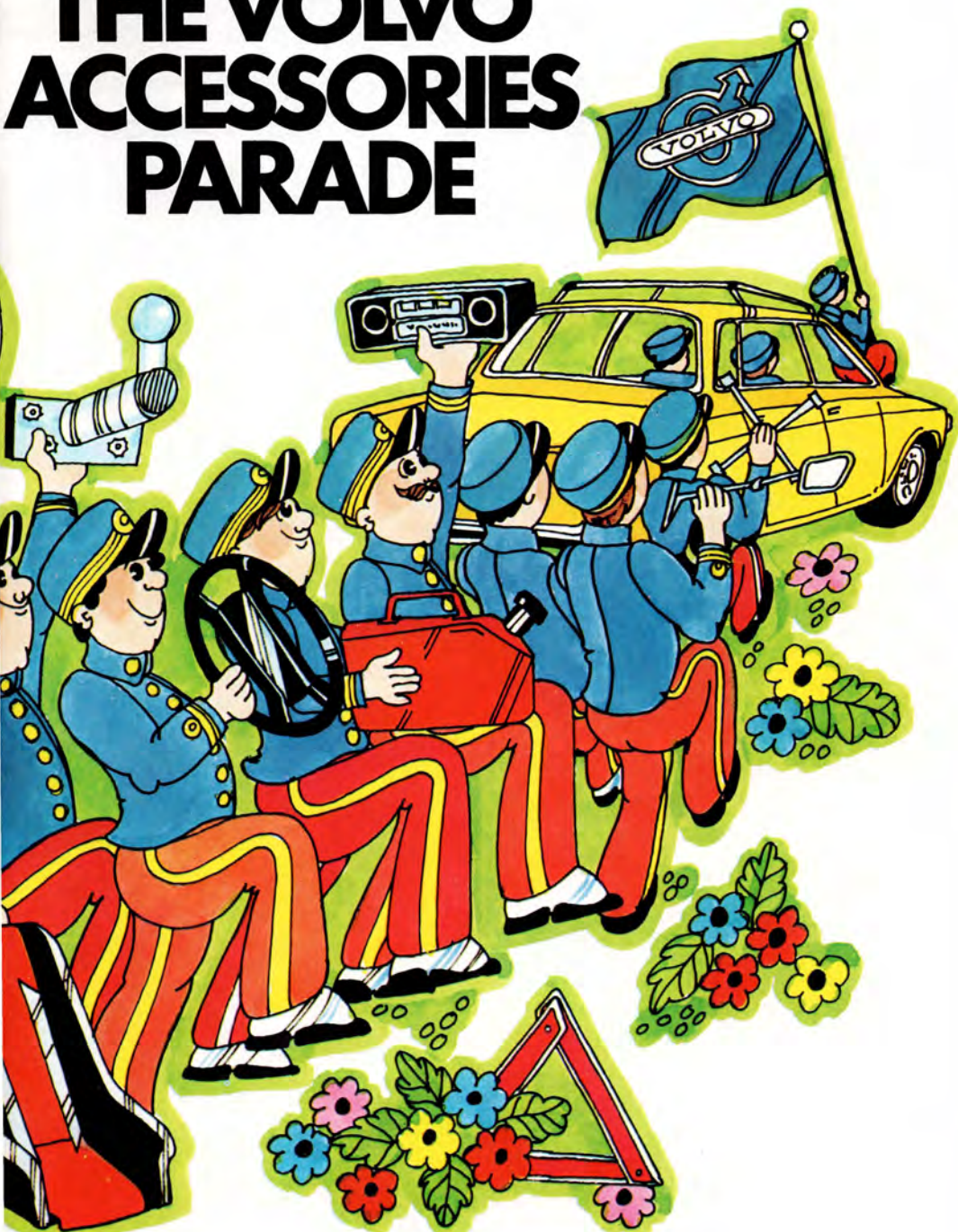


THE VOLVO ACCESSORIES PARADE



Your Volvo has been made to allow you to travel safe and sound in comfort. Volvo accessories have been designed and produced for you who have special requirements.

For you who want to adapt your car to suit you. And for you who want to make your Volvo even more comfortable or luxurious, and for you who want to give your Volvo its own personal character.

Genuine Volvo accessories are carefully tested, and in many cases designed, by Volvo – for the discerning motorist.

Contents

page

Aerials	9	Light warmer	5
Air Conditioning	24, 25	Lock oil	32
Antifreeze	32	Luggage bag	14
Antistatic cable	33	Luggage racks	15
Ambient temperature gauge, electronic	22	Luggage retainer	14
Armrests	17, 19	Mats	20
Ashtray illumination	6	Oil pressure gauge, electric	22
Auxiliary headlight rims for 164	29	Oil temperature gauge, electric	22
Auxiliary headlights	4, 5	Overrides	28
Auxiliary seat for 145	19	Paint	32
Battery tester	33	Polish	33
Blankets	20	Quick start	31
Bonnet illumination	7	Radios	8, 9
Boot storage box	12	Revolution counter, transistorized	23
Boot handle	12	Safety catches	18
Brake fluid	33	Seat belt reminder	19
Bulb sets	6	Seat covers	21
Bumper bar	29	Shock absorbers	16, 27, 29
Carburettor fluid	32	Ski racks	14
Car care items	33	Sponge	33
Child safety seat	18	Spotlights	4, 5
Children's bench	19	Steering wheels	26
Clock, electric	23	Stereo equipment	10, 11
Console, stereo cartridges	9	Stone guards	28
Consoles	17	Sun visor	31
Door pocket	17	Switch panel	6
Driving mirrors	31	Tank cap, lockable	13
Exhaust pipe extensions	28	Tow bar	16
Fire extinguisher	17	Tow ball guard	16
Floor mats	20	Tow ropes	12
Fog lights	4, 5	Town lights	5
Fuel cans	15	Trim mouldings	28, 29
Gear lever knob	27	Voltmeter	22, 23
Grille with auxiliary headlights	4, 5	Warning triangle	30
GT-equipment	26, 27	Wash leather	33
Guard net	12	Washing fluid	33
Halogen headlights	4, 5	Wax	33
Hazard warning indicators	30	Wheel nut wrench	27
Headlights rims, 164	29	Wheel rims	27
Headlight wipers	28	Wheel trims	29
Head restraint	19	Winter aids	32
Instrument panel	17, 22, 23	Winter seat covers	20
Instruments	22, 23, 26, 27		
Jump lead	33		
Lighting	4, 5, 6, 7		

4 Lighting equipment

1, 2, 3. Fog lights

The rectangular fog lights give a long and wide beam of white or yellow light. Available for all variants of the Volvo 140 Series. Powerful halogen bulbs ensure increased durability without loss of effect. Built-in foglights have been standard equipment on the Volvo 164 since the introduction of the 1970 models. Round foglights with clear glass are also available.

1, 2, 3. Spotlights

Spotlights give a concentrated long-range beam –

resulting in better visibility and safer driving. Available with both clear or yellow glass. Easy to fit on the bumper bar. To get the best results wire them up over an extra relay. Round spotlights with clear glass are also available.

3. Grille with auxiliary headlights

Suitable for all Volvo 140 models. Complete with spot or fog lights and installation parts. The lights are well protected by the grille, thus reducing the risk of damage.



H4 – headlights inserts with halogen bulbs

Part No. 282757 – 4.

Strong white beam ensuring a good view and safe driving. Directly interchangeable with standard headlights.

Output: Full beam 60 W, dipped beam 55 W.

4. Town lights

Round: Part No 282851 – 5 up to 1972 models.

Part No 282958 – 8 w.e.f. 1973 models.

Rectangular: Part No 282989 – 3 up to 1972 models.

Part No 282990 – 1 w.e.f. 1973 models.

Only available on special order in U.K.

Yellow lights which make you more visible to other road users in the daytime. The town lights light up when you turn on the ignition. When you turn on your side lights their output switches down to 10 W. And when you turn on your headlights they go out altogether.

Headlight reminder

Part No. 281337 – 2.

If you have forgotten to switch off your headlights a buzzer will sound when you open your door.



1. Headlight wiper with washer

Part Nos., see list.

The days of having to get out and wipe off your headlights are over. Just press a button and let the wiper blades sweep over the headlights whilst a jet of water washes them.

When not in action the blade rests beside the headlight and so does not impair the light beam. Clean headlights give you a better view and increase road safety. (Dirty headlights can **reduce** your lighting by as much as 80%.)

Suitable for both LHD and RHD cars.

2. Extra bulbs *Part Nos., see list.*

Spare bulbs and fuses. Complete kit in a shockproof case.

3. Ashtray illumination

Part No. 281460 - 6.

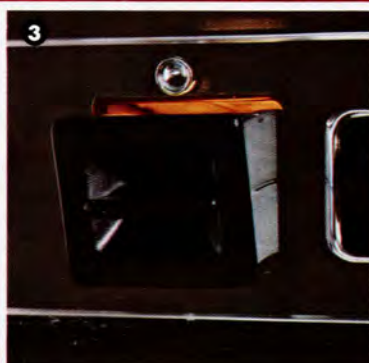
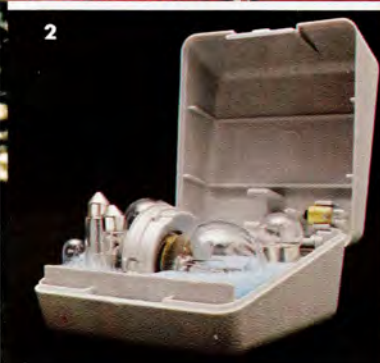
Up to 1972 models.

The lamp is synchronized with the instrument lighting. Now you can see your ashtray in the dark.

4. Switch panel

Part No. 282334 - 2.

An extra panel with three switches and a warning lamp. Located under the instrument panel and fuse-box cover.



5. Boot illumination

Part No. 282038 - 9.

Lights automatically when you lift the boot lid.
Standard equipment on 140 Grand Luxe and 164.

6. Engine illumination

Part No. 282058 - 9.

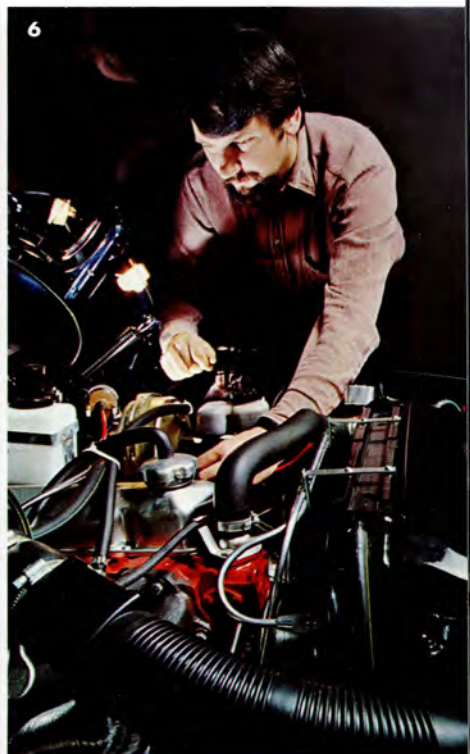
When fitted you can see your engine in the dark.

7. Grille kit with fog lights

Part No. 282927 - 3.

For 1975 models.

Also available with spot lights (Part No. 282928 - 1)
1975 models.



The Volvo Radio and Stereo Programme

A new generation of Volvo radios, and now even better. The Volvo radio programme has been developed in collaboration with one of the world's leading radio manufacturers, and has been specially adapted by designers and technicians to suit Volvo cars. That is why we are able to give a 2-year warranty.

Each radio package contains the radio set, loudspeakers, suppressors, installation parts, installation instructions, instruction manual and warranty card.



1. FM/AM

Part No 283200 - 4.
Push button tuning for three FM stations and two on the medium wave.

2. FM/MW/LW

Part No 283203 - 8.
Easily operated radio with push-buttons facilitates the rapid selection of one LW, two MW and two FM stations.

3. MW/LW

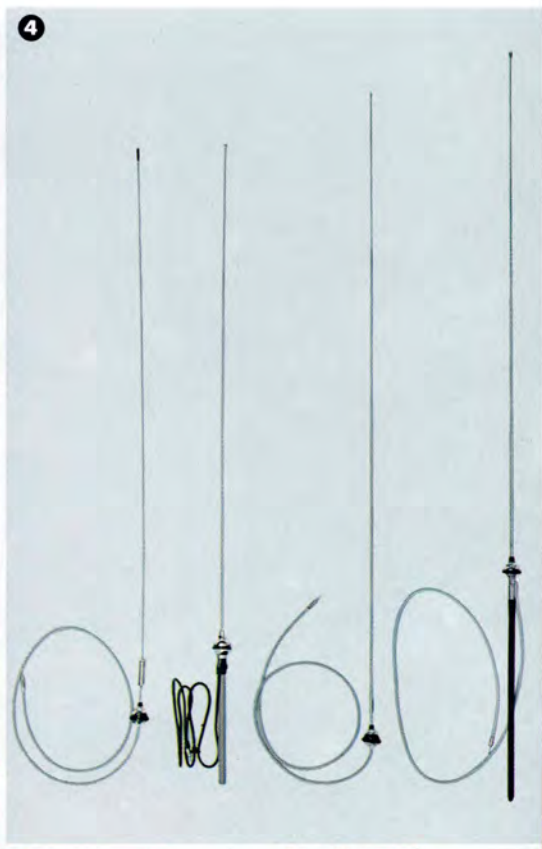
Part No 283206 - 1.
Push button tuning for 3 MW and 2 LW stations.

4. Aerials

Speak to your Volvo dealer and make sure that you get the right aerial for your Volvo radio.

5. Storage rack

Part No 282684 - 0.
Keep your stereo cartridges and oddments in order.



With the Volvo combined Radio-Stereo tape player you can decide for yourself what you want to listen to. There are 8-track cartridges catering for every taste.



1. Volvo 8 Stereo

Part No 283211 - 1 Stereo FM.

Part No 283214 - 5 Stereo MW/LW.

The Volvo 8 Stereo. Specially made for Volvo. Excellent stereo effect from loudspeakers in front doors.

And a radio too.

Push button tuning allows you to select the right station without having to take your eyes off the road.

2. Extra door loudspeaker

Part No 283216 - 0.

Extra loudspeaker to fit in door. New model.

3. Extra loudspeakers, rear window

Part No 283215 - 2. Switch, radio 282344 - 1. Switch, stereo 281452 - 3.

These loudspeakers mean that your passengers can enjoy **that sound** as well. A variable switch for the radio means that you can adjust sound reproduction steplessly between four speakers. There is a three-stage variable switch for stereo units.



1. Boot storage box

Part No 283324 - 2.

Black plastic box in which you can stow all kinds of oddments and prevent them cluttering up the boot. Locate on right side of boot. Plenty of storage space in the lid as well - your car tools for example.

2. Boot handle

Part No. 277987 - 4.

Makes it easier to open and close the boot lid.

3. Polythene tow rope

Part No. 277921 - 5.

5 metre (16 ft) tow line with warning flag in middle.

3. Towing cable

Part No. 277329 - 9.

Plastic covered with extra plastic guards on ends. 5 metres (16 ft) long with red warning flag in middle.

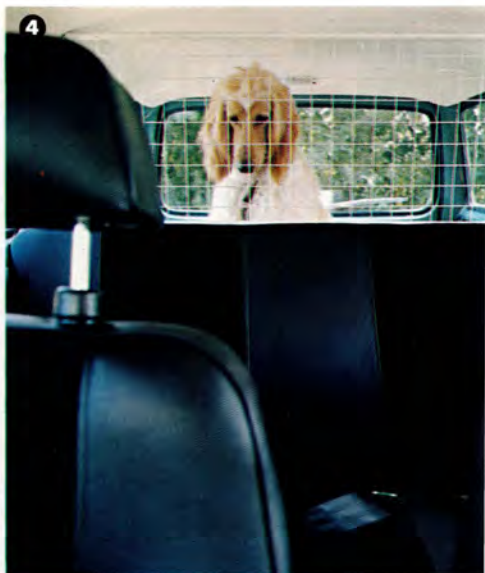
4. Guard net

Part No 283253 - 5.

Heavy-duty wire net welded to a tubular steel frame. Stands up to hard wear. Specially made for dog owners and heavy goods transport.

5. Guard net *Part No. 281468 - 9.*

Suitable for both Volvo 145 Estate Car and 145 Express. Stops cargo flying forwards in conjunction with heavy braking. Nylon net in chromed-steel tubing frame.



Fuel cans

6, 7, 8.

You can choose between a 5-litre can (just over a gallon) 281466 - 3, Fig. 6, and a 10-litre (2½ galls.) can 281467 - 1, Fig. 7. Both of them have a filling tube in the screw cap. Remember to keep your fuel can filled. If you want it we have also got a 20-litre (4½ gall.) jerrican 282442 - 3 with filler tube 282443 - 1, Fig. 8.

9. Fuel can

Part No 281108 - 1.

Fits snugly in the spare wheel recess. Contains 7 litres (1¾ galls.). Filler tube in fuel cap (Not UK).

10. Fuel can

Part No 283308-5.

Useful sheet-metal can. Fits perfectly in spare wheel hub. Contains about 6 litres (1½ galls.) and has a filler tube in the screw cap.

11. Tank cap

Part No 281007 - 5 up to 1973 models.

Part No 283235 - 0 from 1974 models.

By fitting a lockable tank cap you won't have to worry about forgetting the cap at the garage, as you can't get the key out unless it's locked. This item is made of die-cast zinc covered with red nylon.



1. Luggage bag

Part No. 281002 - 6.

A large practical bag, made of heavy-duty textile-reinforced plastic with zips on both sides. Protects the underneath of your luggage too.

1. Luggage retainer

Part No. 277007 - 1.

Six-legged "spider" which keeps your luggage firmly in place.

2, 3. Ski holders

Part Nos. (Fig. 2) 282337 - 5 and (Fig. 3) 279983 - 1.

Two types, one of them lockable to prevent theft.

Both of them easy and quick to fit. Only available on special order in U.K.



4. Roof rack for the Volvo 145

Part No. 281376 - 4.

Stable and strong with 1050 x 1550 mm (41 1/2" x 61") cargo surface. 9 varnished wooden ribs. 6 attaching legs which clamp onto the gutters.

5. Roof rack for Volvo 145 Express

Part No. 282058 - 7.

Same strong stable design but with different attachments. The Volvo 145 Express is preadapted for a roof rack, and has 6 attaching bolts in the sides of the roof. Only available on special order in U.K.

6. Roof rack with skiholders

Part No. 282765 - 7.

Only available on special order in U.K.

7. Roof rack without skiholders

Part No. 282766 - 5.

975 x 975 mm (39" x 39").

Both of these racks have double attaching units on each leg.



1. Tow bar *Part No 283010 - 7.*

Up to 1973 models.

Designed and tested by Volvo. Approved for trailers up to 1200 kg (2650 lb.). The towbar is fitted direct to the body member system by only 8 bolts. All-welded steel tubing. 50 mm (1.96") forged ball. Total weight 9.3 kg (20 lb). Ball guard (*Part No 282993 - 5*). Stainless steel. Protects the tow ball.

2. Caravan "shockers"

Part No. 282877 - 0.

3. Tow bar *Part No 283020-6.*

a) 1974 Volkvos.

Designed and tested by Volvo. Suitable for trailers

up to 1200 kg (2650 lb.).

b) The tow bar is quickly and easily fitted and detached with a wheel nut wrench.

c) When running without a trailer it is safer not to have a tow bar attached. It can cause great damage to a car running into you from behind and can also be dangerous when backing into a kerbside parking space.

4. Fire extinguisher *Part No 283259 - 0.*

Fire extinguisher - an invaluable aid in case of fire.

5. Door pocket

Part No. 283531 - 7 left. Part No. 283332 - 5 right.

Useful storage space for maps and oddments. Made of rugged plastic.



6. Tunnel console Part No 285238 - 4.

Keep your travelling oddments in order.

7. Tunnel console with armrest

Part No. 282449 - 8.

With 60 mm recess for clock or an instrument, and three switches and a warning lamp.

Storage space under the armrest.

Suitable for Volvo 140 Series up to 1970 models.

8. Tunnel console Part No. 282001 - 7.

Recesses for two 60 mm instruments or clock.

Complete with 3 switches and a warning lamp. Suits

all Volvo 140 and 164 Series with automatic gearboxes up to 1971 models.

9. Part No. 281374 - 9.

With recess for clock.

Complete with three switches and a warning lamp.

Suits 140 Series up to 1970 models.

Tunnel console without switches and clock recess.

Part No. 281375 - 1.

10. Volvo 140 and 164 Series 1972 models.

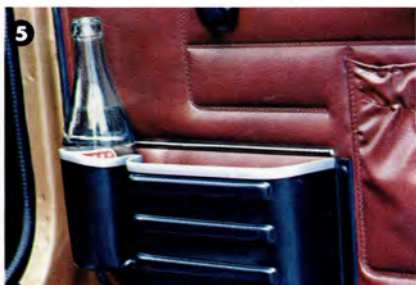
Console 282774 - 9 for automatic gearboxes.

Console 282768 - 1 for manual gearboxes.

11. Volvo 140 and 164 Series 1975 models.

Part No. 282627 - 9.

Insert for clock for console. (Part No. 282628 - 7.)



1, 2, 3. Child safety seat

Part No. 285008 - 1.

Small children in cars must sit in a safe seat. The new Volvo child safety seat accommodates children until they are 117 cm (5'10") tall, eg six years old. The seat is fitted with its back towards the fascia, and can be put in in a matter of minutes, without the aid of tools. Suitable for all cars with effect from the 1965 models.

4. Child safety catch for rear doors

Part No. 282060 - 3 for Volvo 144, 145 and 164.

Part No. 277044 - 4 for Volvo 144 up to 1970 model. This safety catch prevents children from opening the rear doors from the inside of the car. The catch is operated from the front seat.

We also stock a safety catch for the Volvo 145 tailgate. Standard equipment on 1973 models.



5. Seat belt reminder

Part No. 282595 - 8.

Reminds you to put on your seat belt. A buzzer sounds off and a warning light starts flashing immediately you turn on the ignition. Standard equipment on all cars manufactured since 1st January 1972.

6. Armrest

Part No 283284 - 8.

Exclusive combined armrest and locker for fitting between the front seats. The armrest forms the locker lid.

7. Children's bench

Part No 282441 - 5

Fills up the space between the rear seat and the front

seats. Prevents small children falling down into the gap between the front and rear seats. Lets your children have safe and comfortable naps on long journeys.

8. Extra seat for Volvo 145

Part No 283307 - 7.

Fit backwards behind the rear seat. Complete with armrests, head restraints and seat belts. Folds flat down when not in use.

9. Rear seat head restraint

Part No. 282098 - 3.

Gives protection if rammed from behind. Adjustable. Gives that extra comfort on long journeys. Covers available in many colours.



Floor coverings

Part Nos., see list.

1. Rubber mats

Keep your carpets clean and free from wear.

2. Floor trays

Moulded with a small extra lip.

Collect dirt, gravel and melted snow.

Available for front and rear floor, and for LHD and RHD cars.

3. Winter seat covers

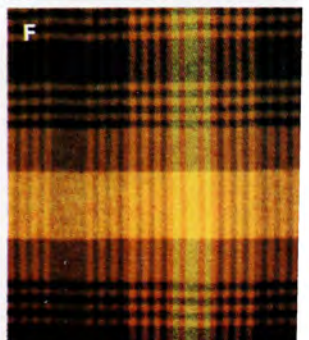
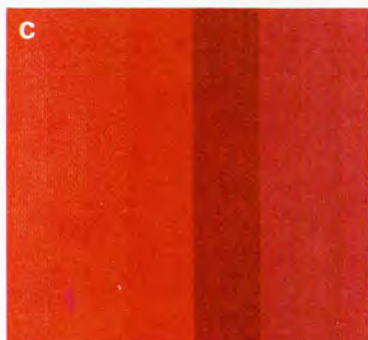
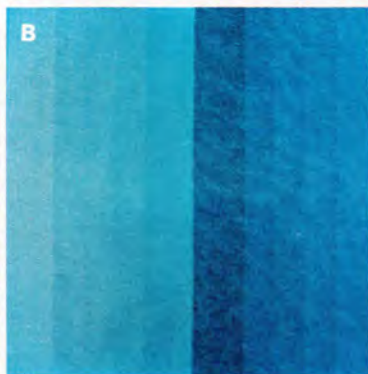
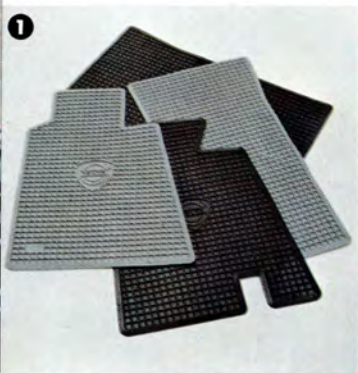
Part No. 282769 - 9.

Made of 100% terylene fibre. Have excellent insulation properties. Due to their pliability they fit excellently, and suit both the Volvo 140 and 164 Series. Can be washed in a washing machine.

Car blankets

Part Nos., see list.

Soft and comfortable plaids and blankets in many colours and patterns. Material: 55% wool and 45% rayon wool. Can be washed in washing machine or dry cleaned.



"Front Runner" seat covers

Exclusive covers with perfect fitting for front and rear seats and head restraints. Protect the original upholstery at the same time, giving your car extra personality. Many colours to choose from for Volvo 140 and 164 Series.

Made of 100% nylon. Can be washed in a washing machine. Non-iron.

- 1. Blue
- 2. Cerise
- 3. Green
- 4. Orange
- 5. Lion yellow
- 6. Maroon
- 7. Beige

Only available on special order in U.K.



"Round" instruments

1. Electronic ambient temperature gauge

Part No. 282597 - 4.

This gauge tells you of the ambient temperature just above the road surface. You never need let a slippery road take you by surprise.

2. Voltmeter Part No. 282799 - 6.

Shows you the battery voltage when you turn on the ignition. When the engine is running it shows you the alternator voltage. Should the voltmeter show you a voltage of less than 12V when driving, then something has gone wrong with your electrics.

3. Electrical oil temperature gauge

Part No. 282797 - 9.

When running long distances with a heavily loaded engine you can keep an eye on the oil temperature.

4. Electrical oil pressure gauge

Part No. 282795 - 4.

Keep an eye on your oil pressure when running. Should anything go wrong this instrument will tell you know in good time.



5. Transistorized rev. counter

Part No. 282793 - 9 for the Volvo 140 and 282794 - 7 for the 164.

Red warning fields for excessive engine speeds. Helps you change gear at the right engine speeds.

6. Extra instrument panel to put on fusebox cover

Part No. 282447 - 2.

Up to 1970 models.

This accessory has 60 mm recesses for ambient temperature gauge, electric clock, etc. Space for other instruments such as voltmeter, oil pressure gauge, etc.

7. Instrument location in 1972 model cars.



8. Electric clock

Easy to read and reliable. Built-in lighting. Locate in glovebox lid or instrument panel on fusebox cover. Ø 60 mm.

9. Rev. counter

Part No. 281047 - 1 for Volvo 140 and 281441 - 6 for 164. For instrument panel installation.

10. Rev. counter

Part No. 282773 - 3 for Volvo 140 and 282773 - 1 for 164. 1973 models.

This transistorized revolution counter has a red warning field for excessive engine speed, and will help you change gear at the right engine speeds. It is installed in the recess in the standard instrument panel.



Air Conditioning

For Part Nos., see list of different variants.

What every Volvo owner needs to remain cool, calm and collected, whatever the atmospheric conditions.



This is how Volvo Air Conditioning works

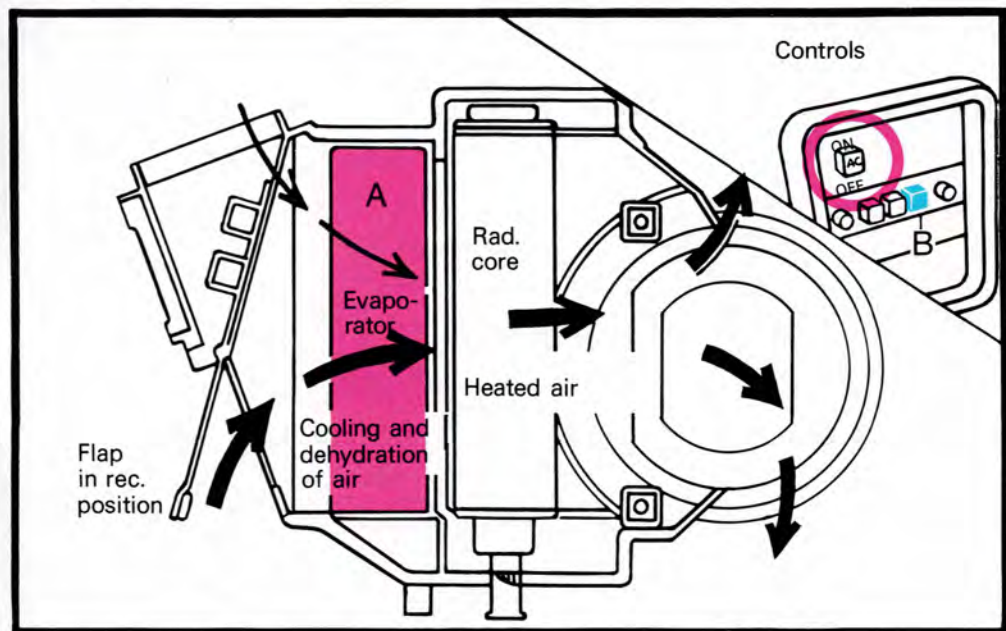
The cool air can be regulated individually through four nozzles in the dashboard as well as through the other air nozzles in the car.

1975 Volvo cars are available ready for the installation of Air Conditioning.

However, this must be specified beforehand when ordering 140 series cars. The original heater and ventilation installation is supplemented with an evaporator (A). Air is sucked in by the fan through the evaporator where it is cooled and de-humidified.

The air then passes through the cell assembly where it finally reaches the desired temperature.

Volvo Air Conditioning functions in the form of both open and closed systems (recirculation) – B.



GT equipment

Here are some accessories which will make your Volvo even more sporting.

1. GT steering wheel

Part No. 282670 - 9.

Smaller than the standard steering wheel. Energy absorbant. Suitable for all cars up to the 1972 models.

2. New GT steering wheel

Part No. 282882 - 0.

1973 models.

Fulfils all requirements in regard to safety.

Covered with comfortable black imitation leather.

Shock absorbant centre with GT emblem. Light alloy hub. Diameter 370 mm (15").

3. Complete set set of GT instruments

including rev. counter, speedometer, temperature gauge and six warnings lamps.

Interchangeable with the standard instruments.

4. Rev. counter

Part No. for the Volvo 140 and 164 1973 models

- see pages 22 - 23.



5. GT shock absorbers

Part No. 282697 – 2 front and 292698 – 0 rear.
Harder springing than the standard model.
Remember to change all four shockers at the same time.

6. GT flash

Part Nos., see list.
Front, rear and on the sides.

7. Gear lever knob

Part Nos., see list
Embossed Volvo emblem. Covered in leather with comfortable pistol grip.

8. GT stripes

Part Nos., see list
Flourescent black or white stripes having extremely good adhesive properties.

9. Wheel rims

Part Nos., see list.
Light alloy. Chromed steel rims, hub caps and cap nuts. Weight only 8.8 kg (19½ lb.) Width 5". 5½" rims also available.

10. Wheel nut wrench

Part No. 79853 – 8.
A wheel nut wrench makes the loosening of tight nuts easy.



1. Tail pipe extension

*Part No. 281184 - 2 curved.
Part No. 281148 - 7 straight.
Made of chromed brass.*

2. Gravel deflectors for rear mudguards

*Part No. 282448 - 0 leading edge.
Part No. 281476 - 2 trailing edge.
Bright stainless steel.*

3. Stone guard

Part No. 281564 - 0.
This rubber stone guard protects the rear underbody of your car.

4. Overriders for rear bumper

Part No. 281045 - 5.
Up to 1972 models.
Protects your car should anyone with a lower bumper run against you.



5. Bumper bar

Part No. 279979 - 9.

Protects your headlights and grille should you inadvertently drive into something.

5, 6. Trim mouldings

Part Nos., see list.

Mouldings around the wheel housings and along the sills give a little extra shine and elegance. So do the surrounds for the 164 headlights.

7. Wheel trims

Part No. 277584 - 9.

Up to 1970 models.

8. Wheel trims

Part No. 282691 - 5.

With effect from 1971 models.

Give your wheels an even more exclusive appearance. Made of durable bright anodized aluminium.

9. Single-tube gas-pressure shock absorbers

Part No. 282770 - 7 front and 282771 - 5 rear.

Specially tested on the Volvo 164 for motorway driving. Remember to change all four shockers at the same time.

Also suitable for the Volvo 140 Series.



1. Hazard warning indicator

Part No. 281451 - 7.

Should you be forced to stop by the roadside then put on your hazard warning indicators. All four of your flashers will then start flashing simultaneously, warning your fellow road users in good time.

NB. Hazard warning indicators are standard on all Volvo cars with effect from the 1971 models.

1. Warning triangle

Part No. 282531 - 8.

2. Door mirrors

Part Nos., see list.

Blue-tone antidazzle mirrors. Spring-loaded. Only available on special order in U.K.



3. Wing mirrors

Part No. 281091 - 9.
Spring-loaded.

4. Caravan mirror

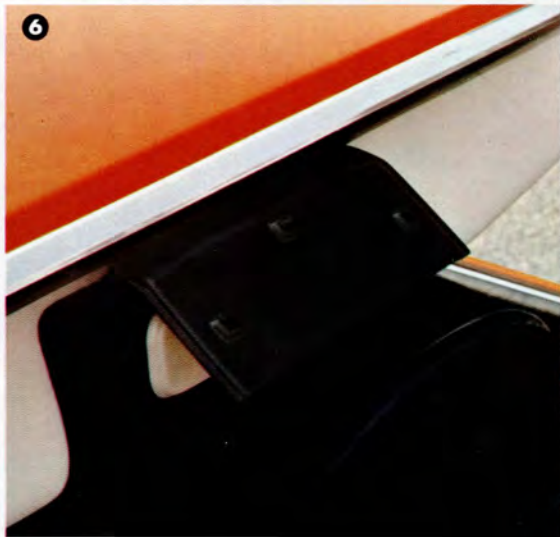
Part No. 282061 - 1.
Blue-tone antidazzle glass. Spring-loaded telescopic arm. Suitable for both sides.

5. Driving mirror

Part No 283282-2 for EEC
Part No 283283-0 for North America
A completely new type driving mirror which can be adjusted from inside the car. Perfect finger-tip mirror alignment.

6. Sun visor

Part No. 282938 - 0.
An effective extra sun visor which you can put in the gap between the standard visors.



Paint

1. Touch-up paint *Part Nos., see list.*

Touch up marks made by flying stones and other small flaws yourself, and thus prevent rust. Touch-up paint is available in all original Volvo colours. In spray cans containing 130 grammes (5 oz.) and 370 grammes (14 oz.) and brush flasks containing rubbing compound in the cap. Also available in 0.1 kg (4 oz.) and 1.0 kg (2¼ lb.) cans. Primer available in 370 grammes (14 oz.) spray cans and 0.1 kg (4 oz.) cans. Engine paint in two sizes – 0.1 and 1.0 kg (4 oz. and 2¼ lb.).

Wheel paint in 270 gramme (10 oz.) spray cans. Non-reflective non-glossy black paint in 370 gramme (14 oz.) spray cans and 0.1 kg (4 oz.) cans.

2. Winter aids

Part Nos., see list.

Quickstart, carburettor fluid, antifreeze, washer fluid de-icing lock oil and lock spray.

3. Universal oil, anti-corrosion oil and rust preservative

In spray cans. Take preventative steps to protect your car.



4. Brake fluid

Part No. 279368 - 5.

(0.25 litre = ½ pint.)

You can easily top up your brake fluid yourself. (If you don't know how, look in your Owner's Manual.) Available in 0.25 litre (½ pint) plastic flasks.

5. Car care

Part Nos., see list.

Sponges, two types of washing fluid (a universal type and a special fluid for the removal of asphalt spots and road salt), polish, wax and wash leathers. Engine cleaning fluid in spray cans.

6. Antistatic cable

Part No. 282756 - 6.

Leads off static electricity.

7. Battery tester

Part No. 282790 - 5.

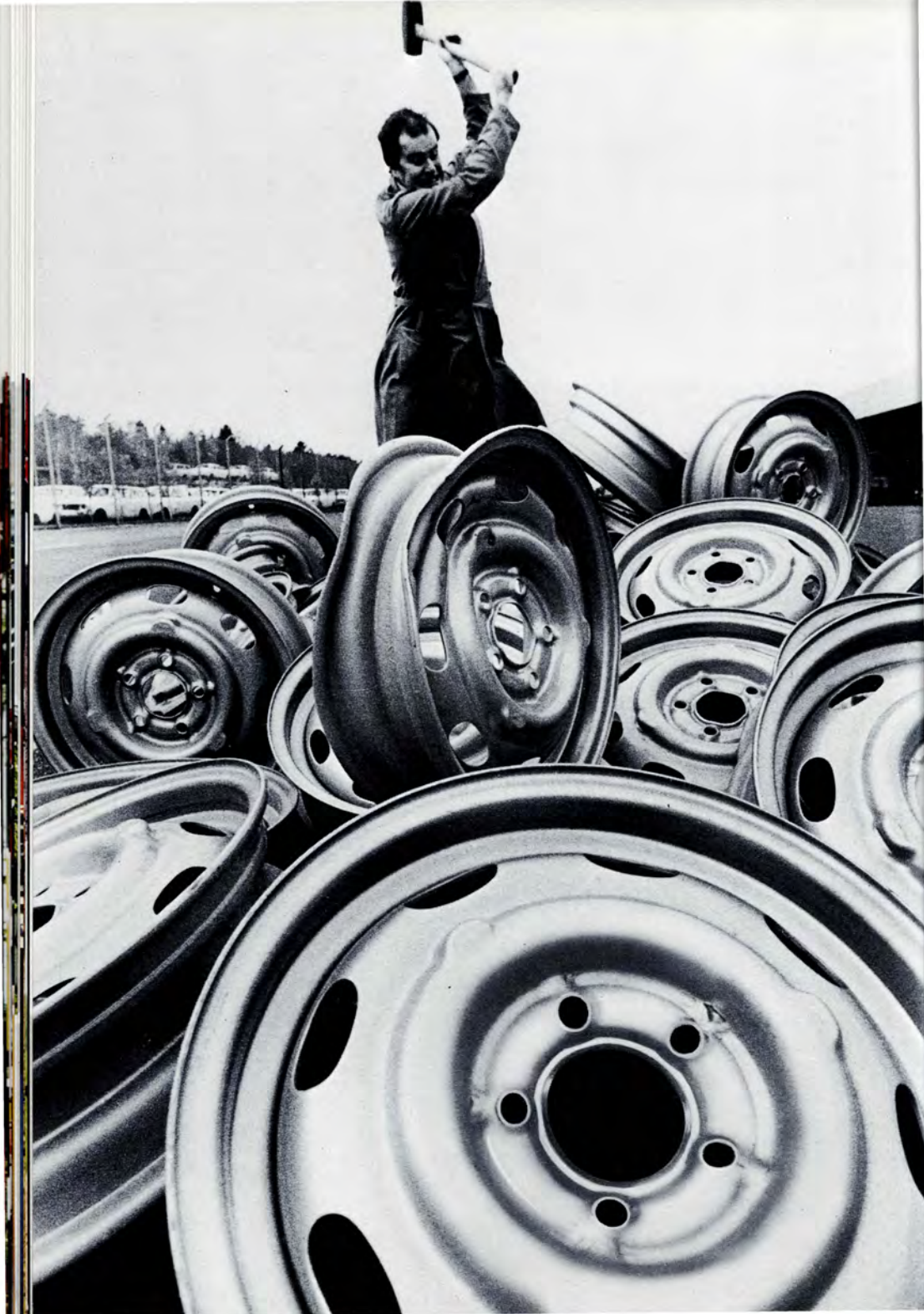
Quickly tells you about the condition of your battery and charging system. Just plug it into the cigar lighter recess.

8. Jump lead

Part No. 282972 - 9.

If your battery is flat you can always borrow some "juice" with the aid of a jump lead. And you can lend some to others in a similar predicament.





**Parts that
don't pass the Volvo
quality control
never become
genuine parts!**

They are destroyed!

This rule doesn't just apply to the wheels you can see in the picture, all parts which arrive in Volvo are subjected to a severe quality control. They do not become "Genuine Volvo Parts" until they have been approved by the inspector. Not until then do we accept them as Genuine Parts. The parts which are not passed are destroyed at Volvo or else returned to the supplier.

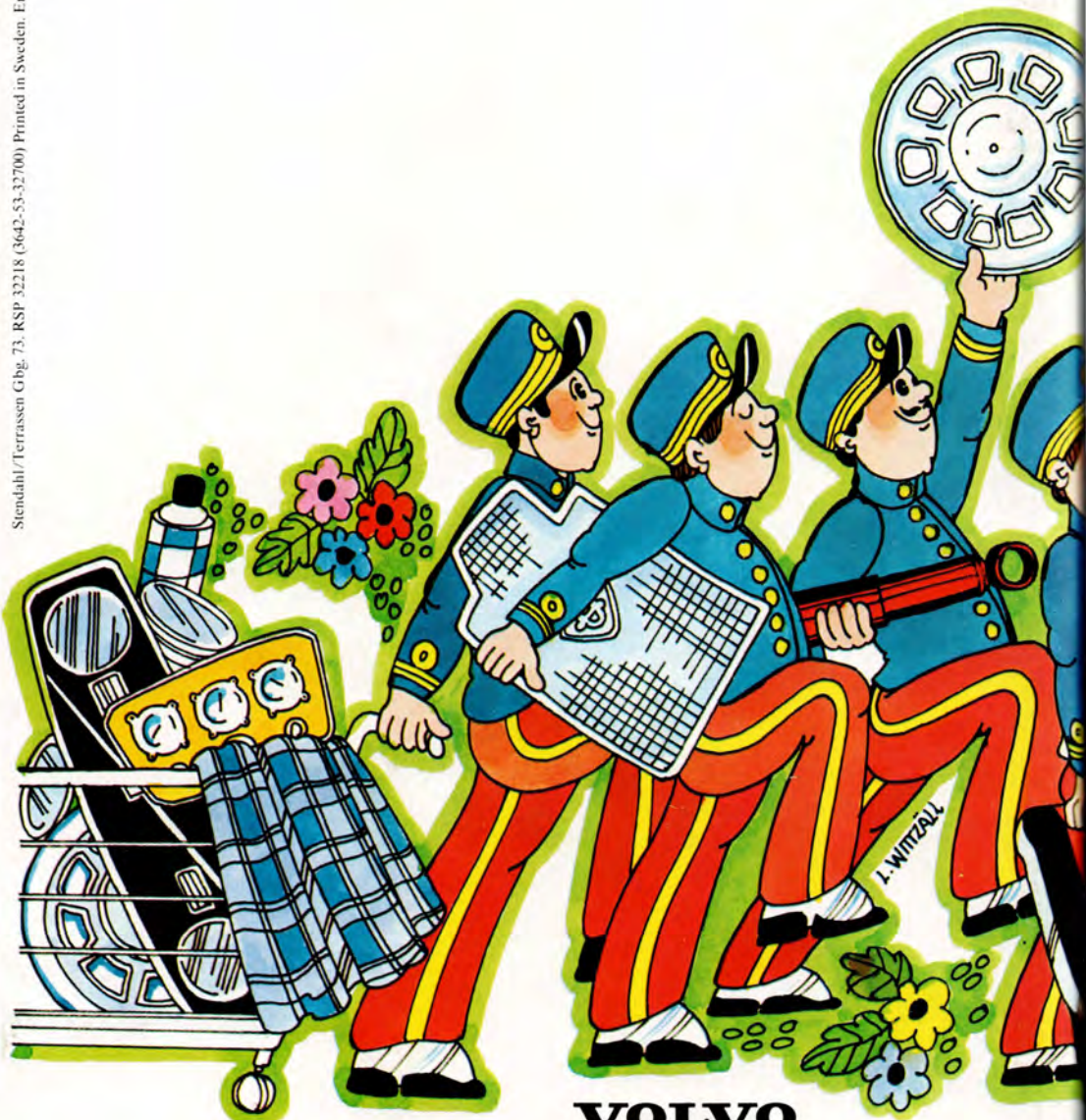
The same strict regulations apply no matter whether the parts are manufactured in Volvo's

own factories or by outside suppliers.

Of course this control costs a lot of money. But despite this "Genuine Volvo Parts" are not usually more expensive than the other parts which are claimed to suit Volvos.

And when you get a Genuine Part you know that you can rely on its quality.

Just one little spurious part can endanger road safety or decrease performance. That's why you must always insist on "Genuine Volvo Parts".



VOLVO
GENUINE ACCESSORIES