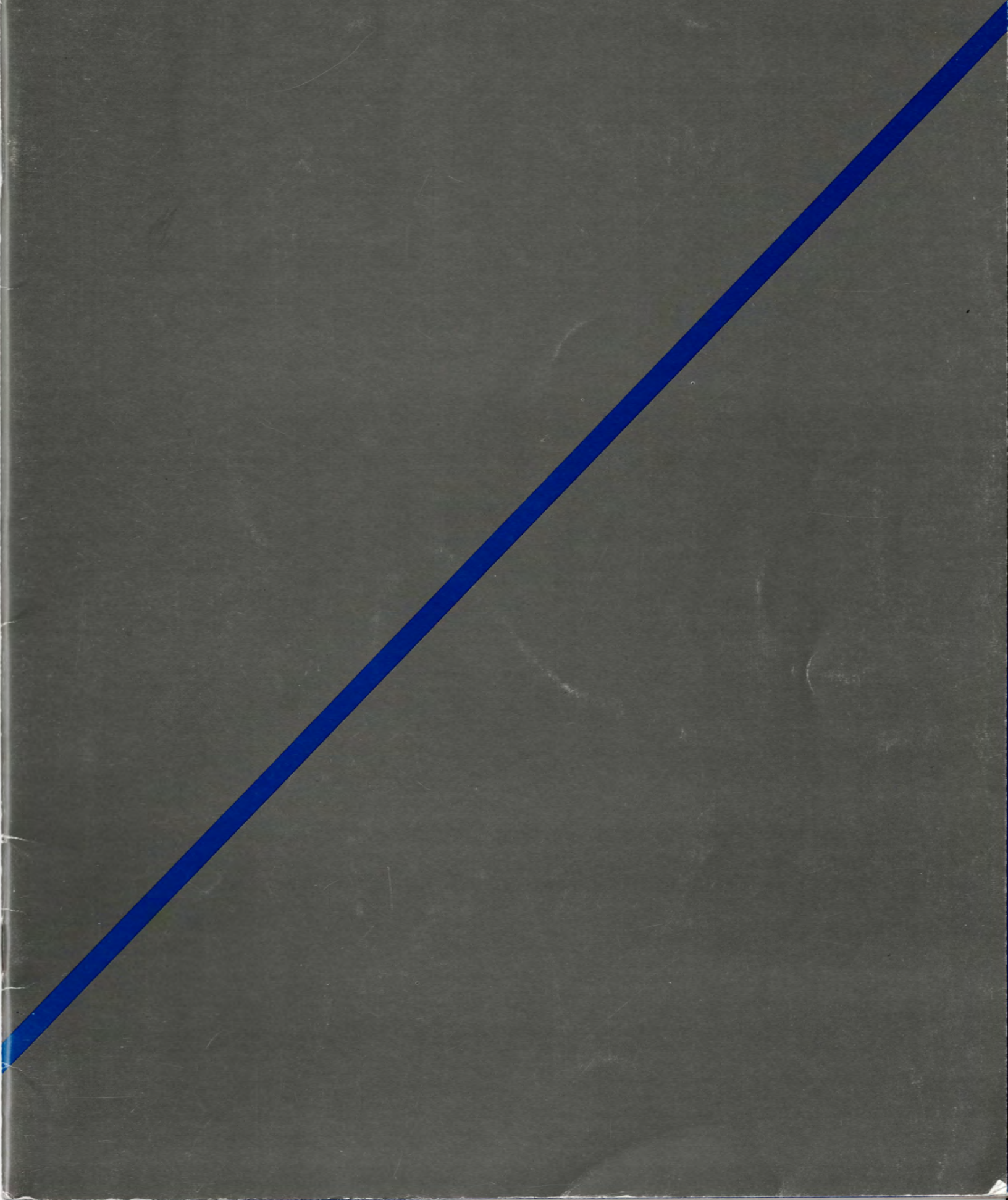


VOLVO

ACCESSORIES
ALL MODELS



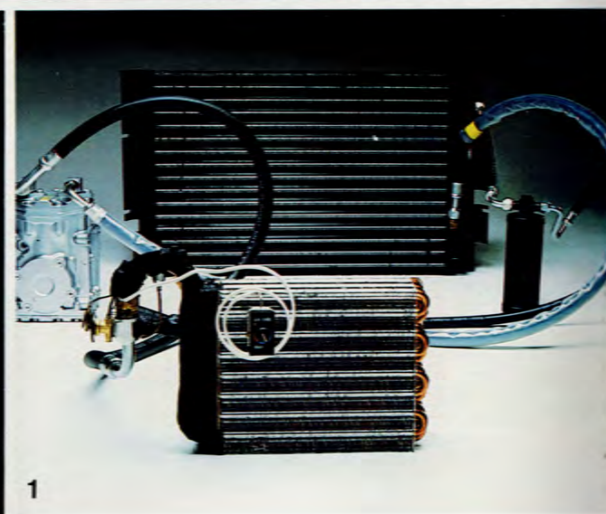
(V) (P) (A) (G)

ACCESSORIES
240 SERIES

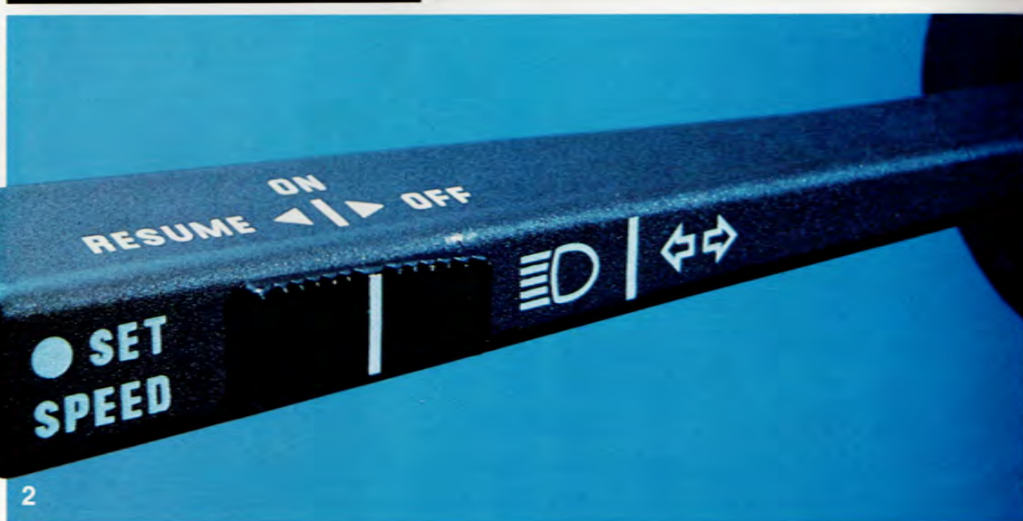
1. Volvo Air Conditioning. Driving comfort all year round. Volvo Air Conditioning circulates cool, dehumidified air throughout your car by means of 10 strategically located outlets, to refresh and relax you and your passengers on the hottest summer days. But Volvo's fully integrated air conditioning system does more. It works in tandem with your Volvo's ventilation and heating systems. So in winter or on damp spring mornings, it can help clear your Volvo's windows of visibility-reducing condensation quickly and easily.



2. Cruise Control. A fully-integrated system for easy, reliable operation. Volvo Cruise Control is designed for simple operation. And because it's fully integrated with your Volvo's acceleration and braking systems, you stay in complete control at all times. All controls are built into the turn indicator/high beam wand. Accelerate to any desired speed above 30 mph and press the Set Speed switch. The Electronic Cruise Control takes over, permitting you to take your foot off the accelerator pedal and to devote your attention to the road ahead.



3. Rear Window Shades. These elegant, roll-out shades shield the interior of your Volvo from heat and sun damage without hampering visibility. They help your Volvo Air Conditioner cool your car more efficiently, while providing special relief from the sun for rear seat passengers.

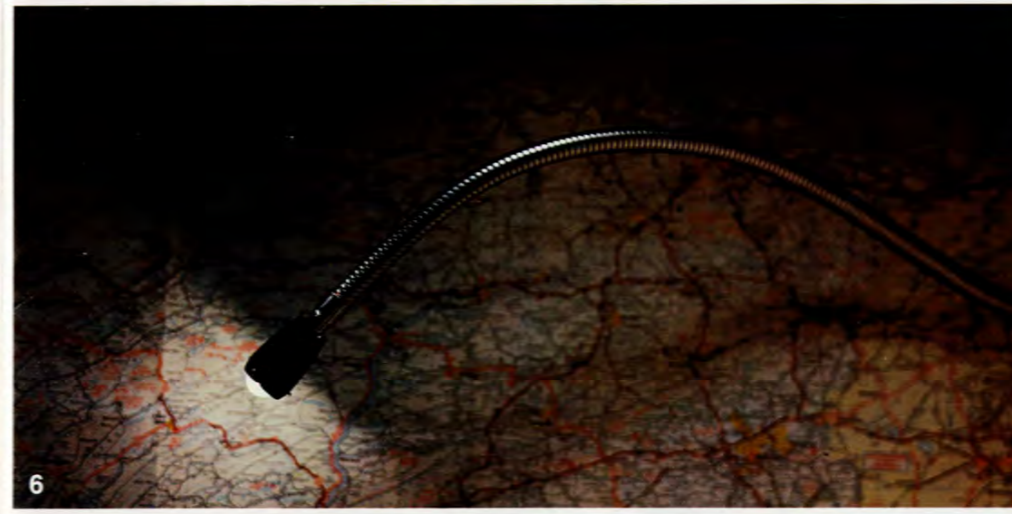


4. Remote Trunk Lid Lock. Conveniently located in your Volvo's glove compartment, this push-button release lets you unlock the trunk without having to leave your car. Standard on 240 Turbo and 240 GL up to 1985.



5. Exterior Rear View Mirrors.
a. Manual Remote Right Side Mirror. Expand your rear view with this Volvo door mirror. Provides additional rearward visibility for safer highway passing. Adjustable from inside the passenger compartment.
b. Electric Remote Side Mirror. Adjust right door mirror with a touch of a button. Special multi-directional switches mount within easy reach of the driver. Standard equipment on GL and Turbo. (Not available for 1986 240.)

6. Adjustable Reading Lamp. For looking up an address . . . checking the map . . . or a little night reading, this "flexible-neck" Volvo lamp puts the light where you need it. Adjustable shade keeps the beam out of the driver's eyes and permits choice of wide coverage or a spot of high-intensity light. Mounts in any number of locations and snaps out of the way in its own unobtrusive holder.



7. Power Front and Rear Windows. There's luxury as well as convenience in Volvo's fingertip control power windows. Rocker switch control for front windows is mounted in the center dashboard console. Rear window controls mount in seat belt console, between the front seats. On/off switch in dash console prevents accidental opening of rear windows. Standard on GL, Turbo, 740 and 760 GLE models.





1



2



3



4



5



6

1. R-Sport Seat Covers. Handsome styling with built-in padded side bolsters for increased lateral support. Tailored for both the front and rear seats. Available in blue/dark blue trim, beige/brown trim and red/black trim up to 1985.

2. R-Sport Headrest Cushions. Matching front headrest cushions are available separately.

3. Tricot Plush Velour Headrest Cushions. Luxuriously smooth finish. Designed for both the front and rear seat. Available individually in blue, brown and beige.

4. Cloth Headrest Cushions. Designed for easy installation and perfect fit. Available for front seat only. Individually sold in black, blue, brown and beige.

5. Tether Anchorage. Designed for accommodating child seats that require top tether strap anchorage. Volvo sedans produced since 1978 have modified rear hat shelves that are predrilled for three top tether anchorages. 740 and 760 sedans are modified to accommodate one anchorage. (Hardware shown comes with safety seat.)

6. Seat Belt Adjuster. Additional comfort for people of less than average height is provided with this adjustable seat belt attachment. Easily installed, this kit lowers the upper attachment point for convenient usage. Contains one passenger's side and one driver's side.

8. Rear Head Restraints. Give your rear seat passengers the same comfort and protection as those who ride in front. Easy-to-clean padded vinyl, over a reinforcing steel frame, is color coordinated to complement your Volvo's interior. Individually available in black, beige, blue, grey, brown.

9. Adjustable Armrest. Make driving more comfortable... arrive relaxed... with Volvo's adjustable, fold-away armrest. Push-button convenience allows you to set six comfortable positions. Available in beige, blue, brown, grey and black.

10. Child Safety Cushion. You'll prize the peace of mind this accessory provides. The cushion lets your little passengers see the road ahead and ride at the proper seating height to use standard seat belts, to help prevent injury from sudden stops or surprising road hazards. The three-point seat belt system holds the cushion firmly in place. Easily removed and positioned. (See your Volvo dealer for proper fitting.)

11. Auxiliary Seat. Convert your five passenger Volvo wagon into a roomy seven-seater. Seat folds down and out of sight when not in use. Comes complete with armrests, seat belts, and entry/exit handle above tailgate. Available in beige and black.

12. Child Guard. Constructed of shock-absorbing foam plastic with tubular steel reinforcements, this safety device prevents children from being thrown between the front seats in the event of an emergency stop. Child guard mounts securely on the back of the driver's seat.

Leather Headrest Cushions (not shown). Available in black and beige.



8



9



10



11



12

1. Tachometer—Two sizes: 80mm and 52mm. Recommended for cars with standard transmission, this fully-transistorized tachometer lets you keep track of your engine's rpms, to help you determine the correct, economical moment to shift gears. Adds a sporty look to your dash. Choice of 80mm size for main instrument cluster or 52mm size for center instrument console.

2. Oil Pressure Gauge. This gauge monitors your Volvo's oil pressure to warn against dangerous drops in pressure. It alerts you to possible low oil levels or to potential clogged filters, loose oil lines and pump or bearing problems. (Pressure ratings expressed in BARS.)

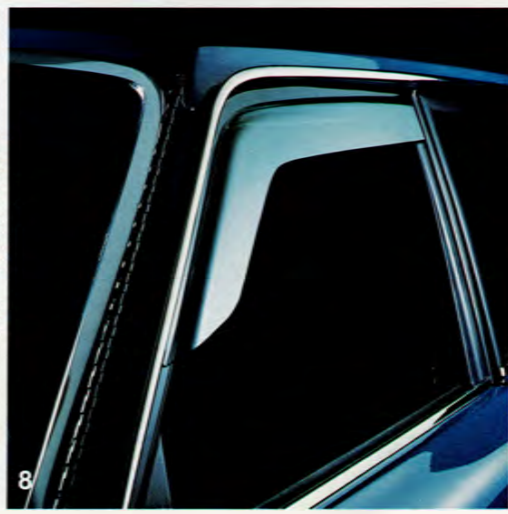
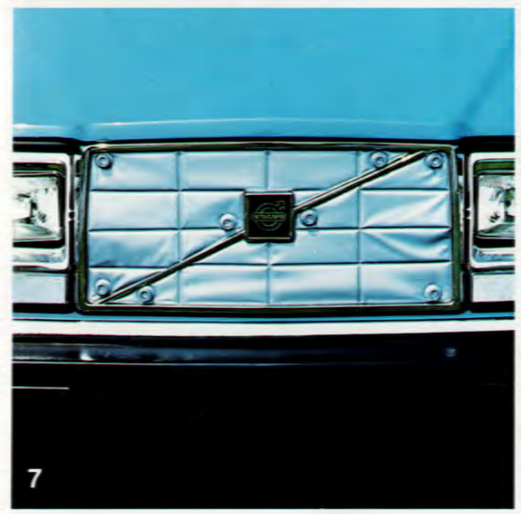
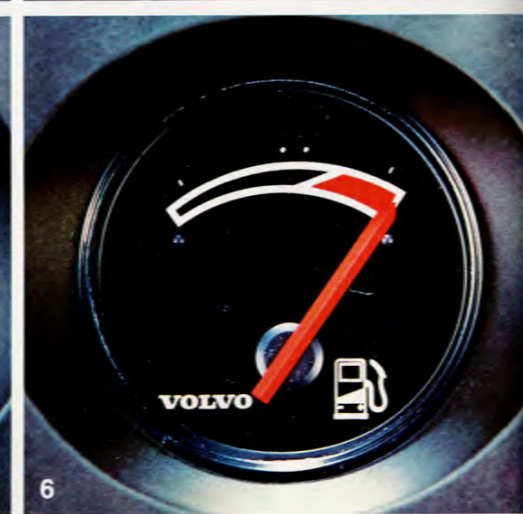
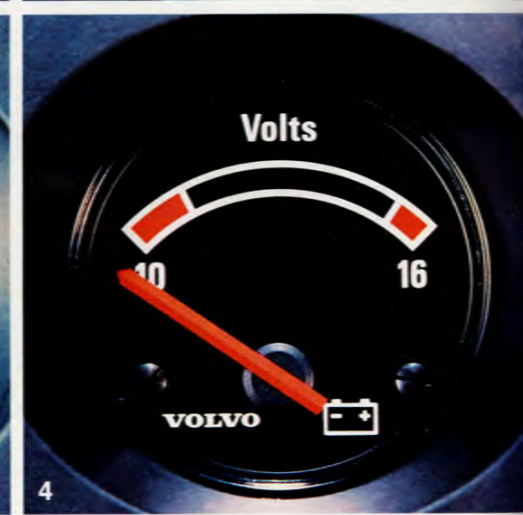
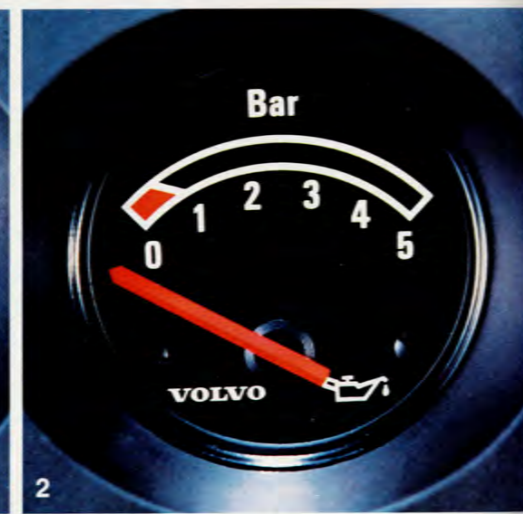
3. Oil Temperature Gauge. Recommended for Volvos used to tow or carry heavy loads or driven in high temperature climates. The instrument warns of engine overheating and possible loss of engine lubrication capability. Also available in Celsius.

4. Voltmeter. The voltmeter monitors your Volvo's electrical system, measuring voltage at the battery while the car is in operation. Lets you spot fluctuations that can signal battery problems, excessive electrical loading or a voltage regulator malfunction. 740, 760 voltmeter is located in top right instrument panel.

5. Ambient Temperature Gauge, Analog. For cold weather driving safety, this instrument keeps you constantly aware of changes in outside air temperature at road level. It alerts you to the possibility of road icing conditions when air temperature falls below freezing. The thermocouple sensor mounts securely under the front bumper. Also available in Celsius.

6. Fuel Economy Gauge. This instrument alerts you to unnecessarily high fuel consumption.

Ambient Temperature Gauge, Digital, All Models (not shown). Indicates outside temperature which is displayed through a digital readout. Locates into any 52mm gauge recess. Can be switched prior to installation into either Fahrenheit or Celsius mode. Available separately is an interior passenger compartment sensor. 740, 760 ambient temperature gauge is mounted in top left instrument panel locations and can also be switched to either Fahrenheit or Celsius.



1. Sunroof Wind Deflector. More than just an attractive finishing touch to sunroof models these Volvo wind deflectors cut glare and reduce wind noise. Made of durable tinted Plexiglass, they complement Volvo exterior colors. Available in smoke, blue, green and copper.

2. Limited Slip Differential. For extra traction in mud, snow or rain, or for starting on slick, icy roads. When one rear wheel starts to spin, it automatically transfers power to the other side to limit wheel spin and pull you through.

3. Engine Block Heater. Take the frustration out of cold winter starting and help prevent excessive engine wear, with this Volvo accessory. Fits into "freeze plug" on your engine block and uses normal electric house current (110V).

4. Battery Warmer. Cold weather saps your battery's starting power by up to 60% just when you need it most. The battery warmer heats your battery, using normal house current (110V), to help maintain full cranking power. Get a warm start on a cold day with this heat and acid resistant wrap-around.

5. Power Sunroof Kit. Increase the enjoyment of your sunroof. Hand crank unit is replaced with a powerful precision motor and gear assembly which provides complete operational control. Dash mounted switch. Standard on 760 series.

6. Fog Lamps. For added margin of vision without reflective glare, Volvo all-weather clear lens, halogen lamps cut through bad weather. Mounted below the bumper for protection and visibility, they add a sporty touch to your Volvo's appearance. Sold in pairs. (Note: a complete selection of halogen driving lamps is available in Canada only.)

7. Grille Cover. Specially designed for Volvo grilles, this tough insulated plastic cover protects your engine from extreme winter weather. It shortens warm-up time and helps the engine maintain a higher working temperature. Keeps out corrosive road salt, rain and snow from engine compartment. Up to 1985.

8. Side Window Wind Deflectors. Cuts down glare and wind noise when windows are open. Designed to look good and function efficiently. Available for both two- and four-door models.

1. Permanent Roof Rack. This sturdy rack increases your wagon's capabilities. Featuring stainless steel construction and corrosion-resistant alloy supports for maintenance-free good looks. The side rails and supports are blacked out to match the window treatment. Two finishes are available: stainless steel and chip-resistant black. Load limit 110 lbs (50 kg). Inside dimensions: 48" x 32" (1200mm x 800mm).



2. Load Carrying System. A complete load carrying system for all Volvo cars. Very strong, durable and versatile. Plastic coated steel tubing to protect loads from scratching and chafing. Cast aluminum gutter rail attachments with soft rubber rail protectors. Load limit 220 lbs (100 kg). Locking knobs available for extra security (see inset). For your cargo needs, the following adapter kits are available separately:

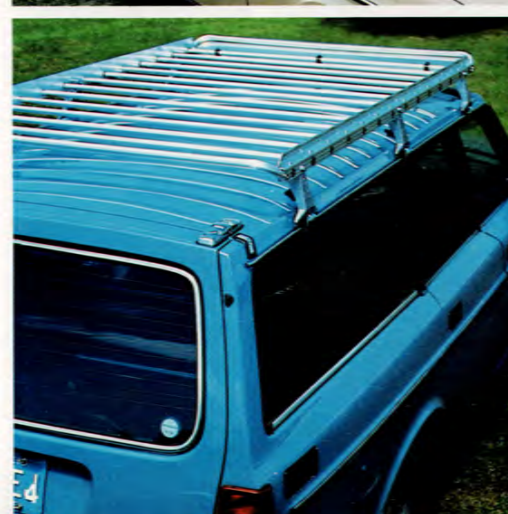


a. Load Basket. Ends can be lowered to permit loading of oversized loads. Inside dimension is 41" x 36" (1025mm x 900mm). Load limit 220 lbs (100kg).
b. Ski Adapter. Will hold up to 4 pairs of skis (non-lockable).
c. Bicycle Rack. For one bicycle. Load rails will hold up to 4 bicycles.

3. Removable Sedan Rack. Quick action fasteners let you secure the rack firmly to your Volvo's roof gutters in just minutes. Made of durable aluminum tubing for load carrying strength and maintenance-free good looks. Load limit 165 lbs (75 kg). The handy nylon luggage net (shown) and a vinyl luggage cover (not shown) are available separately.



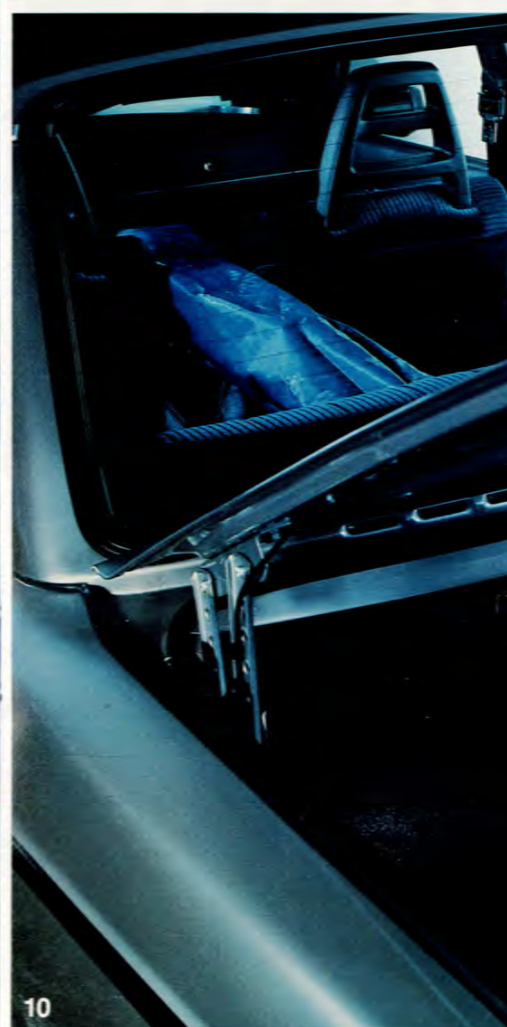
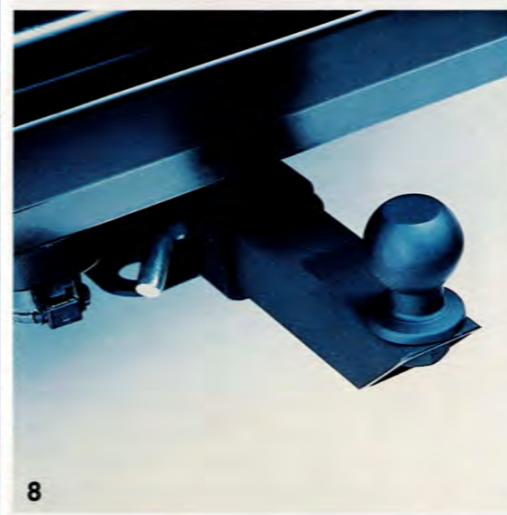
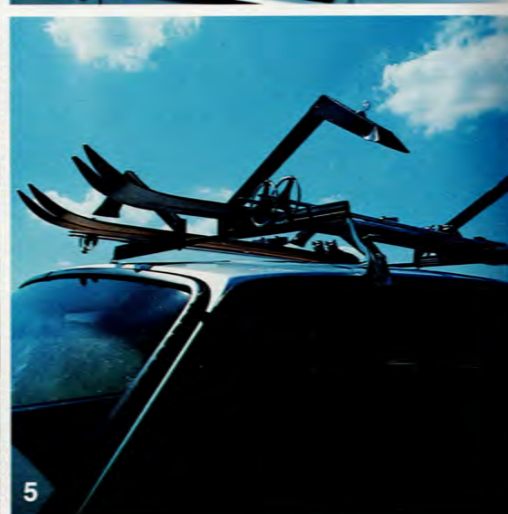
4. Removable Wagon Rack. This sturdy aluminum rack expands the carrying capabilities of your Volvo wagon. Secure the rack firmly to the gutters in just minutes. Total rack weight is 24 lbs (11 kg) and is supplied with front spoiler to reduce wind noise. Load limit 220 lbs (100 kg).



5. Ski Rack. Adjustable to fit securely on your Volvo. Each support is lockable to protect your valuable equipment. Constructed of zinc-plated, polyester-coated steel for corrosion resistance. Holds six pairs of skis. Will fit over permanent roof rack.



Luggage Cover (not shown). Heavy duty vinyl coated fabric with zippered opening to protect luggage carried on the roof. Has luggage capacity of 8 cu. ft. (.23 cu. meters).



6. Steel Cargo Guard. Protect your rear seat passengers from loose luggage or boxes and keep pets safe and secure with this fold-down Volvo cargo guard. Guard can be quickly folded against the roof or removed when not in use.

7. Coin Console. This handy, covered tray holds coins, tokens, or any small object you want to find quickly. Conceals change from curious eyes. Available in black, beige or brown.

8. Trailer Hitch and Wiring Harness. Bolts permanently to car frame for maximum strength. Ball and draw bar assembly are removable for storage when not in use. Maximum towing capacity— 3,300 lbs (1500 kg). (Consult your owner's manual before towing with a Volvo.)

9. Load Leveling Systems. Volvo load levelers are designed to keep your Volvo level for maximum road handling stability under varying load conditions.

a. Fully Automatic Load Leveling System. A unique series of valves inside specially designed shock absorbers automatically adjusts to the load you are carrying. Complete with two shock absorbers and two rear springs, to give you a sedan ride while retaining the utility of a wagon (pictured on page 18).

b. Semi-Automatic Load Leveling System. A special dash-mounted switch lets you control this system's compressor and air shocks to raise the rear of your Volvo when carrying heavy loads. Fits all models (pictured on page 18).

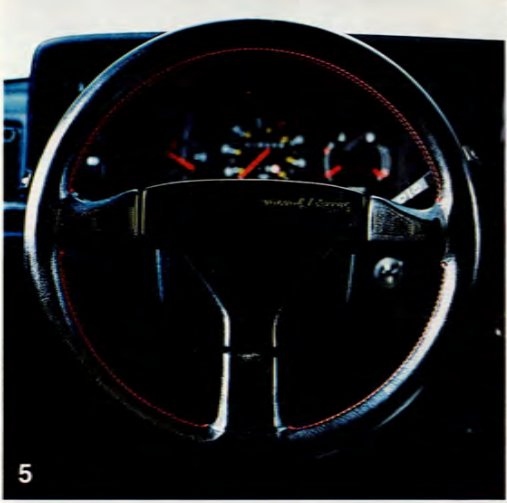
c. Manual Load Leveling System. Consists of special air shocks, air lines and a control gauge mounted in the trunk. Fits all models (pictured on page 18).

d. Spring Shocks. Heavy-duty rear shocks with auxiliary springs maintain ride height under heavy loads or when towing a trailer. Fits all models.

10. Ski Tunnel. A unique, practical way of transporting skis, fishing poles or other long objects inside the car without soiling the interior. Beginning with 1981 sedans, an opening between the rear seat and trunk is cleverly concealed behind the folding rear center armrest. A special tunnel of heavy vinyl has been developed for this opening that includes a plastic case and 'trap door' that allows the long bag to be rolled up and stored behind the armrest. To transport skis, simply open the trunk, unsnap the trap door to the ski tunnel, and the tunnel unfolds as the skis are pushed through.

Engine Oil Cooler (not shown). Should be used in conjunction with automatic transmission oil cooler when trailer towing loads exceed 2,000 lbs (920 kg).

Transmission Oil Cooler (not shown). A must for Volvo owners who do extensive heavy load towing.



Alloy Wheels— Precision-crafted beauty and high strength aluminum alloy are combined in these distinctive sports wheel designs. Light alloy material reduces unsprung weight to provide more responsive road handling and more comfortable riding. Open design improves air flow for faster heat dissipation and superior brake cooling. Precision machining assures wheels are true round for maximum tire life.

1. 14" Fined Alloy Wheel. Elegant, European styling with either small cap and chrome lug nuts or large hubcaps (shown).

2. 15" Turbo Alloy Wheel. Coupled with low profile radial tires this sporty wheel can provide improved road handling.

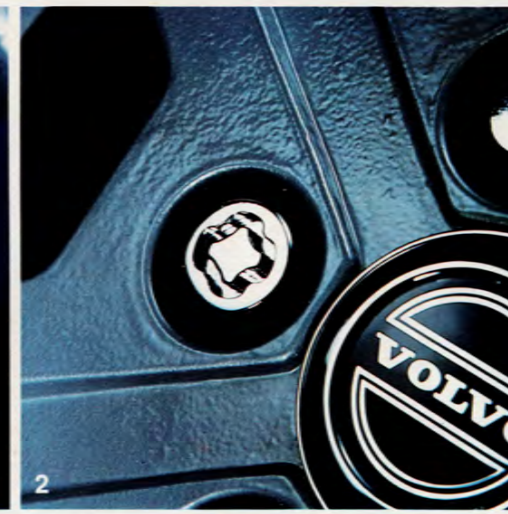
3. 14" GT Alloy Wheel. Used with small hubcap and chrome lug nuts for a sporty appearance.

4. 14" Five Spoke Alloy Wheel. This distinctively styled lightweight wheel weighs only 12.5 lbs. Hubcap included with rim.

5. R-Sport Leather Steering Wheel. Add a GT touch to your Volvo's interior. Covered in leather for a more comfortable grip, this 14" GT Steering Wheel improves steering response and increases driver leg room.

6. Gas Shock Absorbers. Gas pressure design utilizes single monotube construction for fast heat dissipation and superior fade-free performance. Unique design provides for a comfortable ride during normal street driving, but becomes progressively firmer the more they are used.

7. Leather Shift Boot Cover. The GT shift boot is genuine leather. Available in black or beige.



1. Lockable Gas Cap. At today's prices, it pays to protect your fuel investment. Gas cap is made of bright red corrosion resistant material. Comes complete with two keys.

2. Locking Wheel Nuts. Attractive chrome plated steel lug nuts protect your light alloy Volvo wheels from thieves and vandals. Special wrench socket with each package of four lug nuts lets you alone remove wheels. Replacement sockets available through a coded card enclosed with each package.

3. Anti-Theft Alarm. Safeguard your Volvo against forced entry. If opened, a special horn alarm will sound unless a key is placed in the ignition or the alarm is deactivated within 15 seconds. Protect your investment with this Volvo alarm.

4. Bumper Reflector Stripes. Bright, reflective stripes make your Volvo more visible to other drivers. Attractive, self-adhesive tapes, white for the front and red for the rear bumper add a sporty look that also means greater safety. Canada up to 1985.

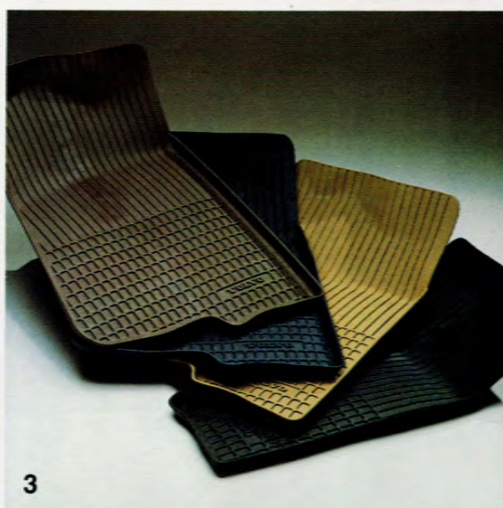
5. Station Wagon Security Cover. Hide contents from view with this easy to install and use security cover. Cloth-reinforced vinyl cover retracts into a storage case when not in use. The cover is color keyed to match interior trim and can be removed for oversized loads. Available in black, blue, beige and brown.



1. Plush Carpet Floor Mats. These luxurious mats are 100% nylon. Custom designed, they feature all-weather durability and protection, woven Volvo-logo heel pad, and non-slip backing. Set of four mats, front and rear, available in brown, beige, blue and black.



2. Koko Mats. Koko fiber mats lend a unique combination of exciting color and protection to your Volvo. Natural fiber mats feature a woven logo heel pad and waterproof non-slip backing. Set of four mats, front and rear, available in brown tweed, blue, beige and black.



3. Thermo-plastic Mats. Color coordinated molded thermo-plastic mats are contoured for an exact fit and maximum protection for your original carpeting. Raised border and waffle pattern traps dirt, water and snow. Rigid construction permits fast, easy removal for cleaning. Studded bottom surface prevents slipping. Set of four mats, front and rear, available in blue, brown, beige and black.



4. Trunk Mats. Protect your trunk and keep it clean with interlocking Volvo mat set. Available in black and designed to fit sedan trunks.



5. Wagon Cargo Mat. Heavy-duty vinyl mat is specifically designed to completely cover the cargo compartment of your Volvo station wagon. Protects the original carpet when carrying cargo and keeps cargo area neat when rear seat is raised. The cargo mat locks in place with velcro attachments, and is quickly removed for cleaning or storage.



6. Spray and Touch-Up Paints. Keep your Volvo's finish looking new with touch-up paints for small areas and fluorocarbon-free spray paints for larger areas. Touch-up paints have a built-in applicator brush with each bottle. Both paints available in colors to match your original finish.



7. Maintenance Items. Your Volvo deserves the best of care. Coolant, Window Wash Solvent,* Brake Fluid,* Cooling System Rust Preventative and Lubricant,* Gas Line Anti-Freeze* and Lock De-Icer* are available for your Volvo's general maintenance.

*Not available in Canada.

Service Manuals (not shown). Easy-to-follow, step-by-step maintenance information for current and past models is contained in Volvo Service Manuals.

1. Fog Lights. For added margin of vision without reflective glare, Volvo all-weather clear lens, halogen lamps cut through bad weather. Mounted below the bumper; recessed in the spoiler.

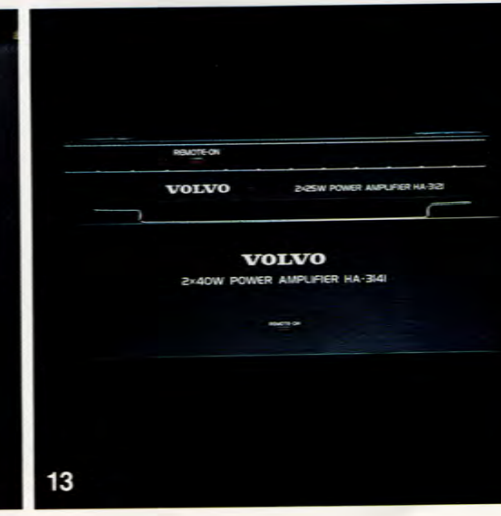
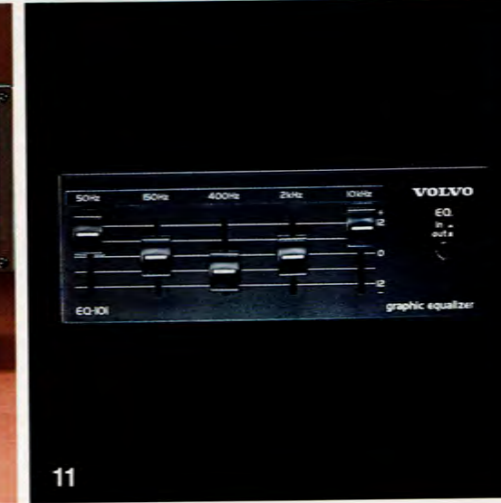
2. Trailer Hitch. Easily mounts to the pre-drilled body member of the 760 GLE. Made to provide proper towing characteristics. Maximum load 3,300 lbs/1,500 kg. (Consult your owner's manual before towing with your Volvo.)

3. Ski Rack. Lockable to protect your valuable equipment, adjustable to fit securely on your 760 GLE. Carries as many as 6 pairs of skis.

4. Cowl Intake Cover. A "cap" for the intake vent; insures proper ventilation usually hampered by snow or fallen leaves. Easily fitted without drilling or screwing. Clips neatly onto the air intake.

5. Permanent Roof Rack. Increase the carrying capacity of your wagon with this handsome permanently mounted rack. Made of stainless steel, with support bases of corrosion resistant chrome alloy, this rack is available in two finishes: black and stainless steel.

Air Conditioner. (740, Canada) (not shown). This air conditioner is built specifically for your Volvo. A four speed fan distributes cool, dehumidified air through the existing ductwork of your Volvo's heating and ventilating system. No leg room is lost and because it's a Volvo air conditioner, it blends perfectly with your car's interior. Up to 1985.



6. Oil Temperature Gauge. Recommended for Volvos that are used to tow, carry heavy loads or driven in high temperature climates. Available in Celsius and Fahrenheit.

7. Oil Pressure Gauge. This gauge monitors your Volvo's oil pressure. Pressure ratings expressed in BARS. One bar equals 14.5 psi.

8. Cruise Control. The Volvo cruise control features a totally integrated control system built into the directional/high beam lever. A simple slide switch engages the cruise control. Applying the brakes or clutch automatically disengages the mechanism. "Memory" feature permits you to resume speed after slowing down or stopping by simply moving the switch to "Resume".

9. Dash Tray. Locates conveniently on the dash, holds an assortment of small objects. Available in beige, black, blue, green and red.

10. Cast Aluminum 3-Way Box Speakers. (Standard on 760 Sedans). Three separate speaker elements combine to provide accuracy, high efficiency and wide frequency response. Separate equalization (± 3 dB) switches are provided for mid-range and treble frequencies.

11. EQ-101 Graphic Equalizer. Plays a vital role in helping to create ideal sound reproduction inside your Volvo. Five slide controls provide acoustical boost or attenuation to any of the designated frequencies, to compensate for acoustical changes when windows are opened or passengers added. With the EQ-101 you can enhance bass response, give added brilliance to highs, or definition to mid-range vocals. Also featured is an on/off switch.

12. Custom Door Speaker Grilles (740, 760). Replace standard color coordinated grilles for increased acoustic transparency and optimum dispersion of mid and high frequencies.

13. High Power, Low Distortion Amplifiers. These clean sounding amps can be mixed or matched in pairs to improve music reproduction dynamics even at lower power settings. They mount out of sight, under the instrument panel. The 2x25 watt amplifier comes standard in the front of the 760. The 2x40 watt amplifier comes standard in the rear of the 760.

Black Fiberglass Rod Antenna (740, 760) (not shown). Fixed, non-retractable, fiberglass rod antenna can be used to replace standard power antenna to add a sporty European flair.

Power Antenna Switch and Harness (Standard on 760) (not shown). This switch permits the standard power antenna to be retracted while the tape deck is in operation.

1. Child Booster Seat. This cushion puts your child at the proper height to use the standard seat belts. Another advantage with the Child Booster Seat is that the child can look out the car window. (See your Volvo dealer for proper fitting.)



1

2. Child Guard. Helps prevent small children from being thrown between the front seats by heavy braking.



2

3. Load Carrying System. Versatility is the key. Start with the basic carrier bars and add on a rack or bicycle carrier. Sturdy lightweight construction will hold up to 220 lbs (100 kg) of evenly distributed cargo. Locking knobs also available (see inset). See page 10 for additional load carrying accessories.



3

4. Automatic Load Leveling System. A unique series of valves inside specially designed shock absorbers automatically adjusts to the load you are carrying. Complete with two shock absorbers and two rear springs to give you a sedan ride while carrying heavy loads.



4

5. Semi-Automatic Load Leveling System. Special air shocks, electrically operated compressor and dash control with built-in gauge. Elevates rear of car with a touch of a button to compensate for heavier loads. Kit contains: 2 special air shocks, large capacity air compressor, air lines and fittings, and dash control.



5

6. Manual Load Leveling System. Features two special air shocks, air lines, gauge, and fittings. Leveler system is regulated in same manner as a tire. Air filler valve installed inside trunk for easy access.



6

7. Rear Mud Flaps. Thick vinyl black flaps with a distinctive white Volvo logo protect rear fenders from mud and stone chip damage.



7



8



9

8. Plush Carpet Floor Mats. Plush, all-weather custom mats feature waterproof, non-slip backing, and a tightly woven Volvo-logo heelpad. Luxuriously enhance your 760 GLE or 740 GLE's interior with these 100% nylon fiber mats. Set of four mats, front and rear, available in beige, charcoal, blue, and rust.

9. Electric Remote-Control Heated Mirror. Melts ice and snow at the touch of a button. Allows setting of the mirror within easy reach of the driver.



10

10. Rear Head Restraints (Standard on 760). Give your rear seat passengers the same comfort and protection as those who ride in front. Requires matching interior cover, available separately.

11. Grille Cover. For cold weather use, the grille cover raises the running temperature of the engine and helps to prevent snow, salt and moisture from entering the engine compartment. Up to 1985.



11



12

12. Sheepskin Seat Covers. Luxuriously thick lamb's wool for the ultimate in interior comfort. Natural beige color with dark brown nylon sides and back. Matching sheepskin headrest cushions are available separately.

13. Sunroof Wind Deflector. Sculpted, smoke-colored deflector is designed to cut glare and wind noise.

14. Color-Coordinated All-Weather Floor Trays. Contoured for an exact fit and maximum protection of your original carpeting. Available in beige, black, blue, green and red.



13



14

1. Steel Cargo Guard. All the features of the cargo guard on page 11 with the added advantage of positioning the guard depending on type of load being carried. Can be located as shown or behind front seats.



2. Cargo Mat. Good investment for protecting the original carpeting when carrying cargo.



3. Luggage Security Cover. Thick vinyl and reinforced with nylon webbing. Cover retracts into its carrying case and is easily removed when carrying large loads. Color keyed to match all interior trims.

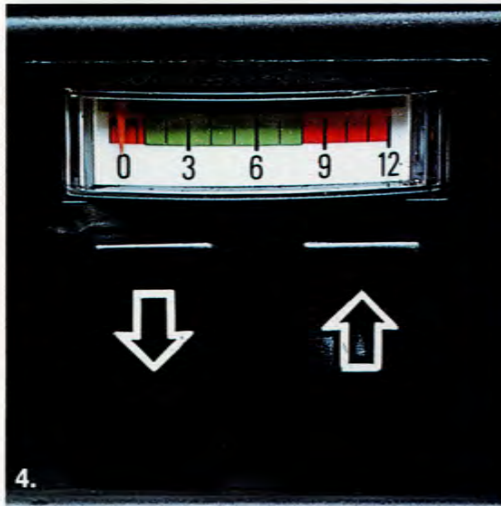
4 Load Leveling Systems. Volvo load levelers are designed to keep your Volvo level for maximum road handling stability under varying load conditions.



a. Fully Automatic Load Leveling System. A unique series of valves inside specially designed shock absorbers automatically adjusts to the load you are carrying (pictured on page 18).

b. Semi-Automatic Load Leveling System. A special dash-mounted switch lets you control this system's compressor and air shocks to raise the rear of your Volvo when carrying heavy loads. Fits all models (pictured on page 18).

c. Manual Load Leveling System. Consists of special air shocks, air lines and a control gauge mounted in the trunk. Fits all models (pictured on page 18).



5. Auxiliary Seat. Convert your five passenger Volvo wagon into a roomy seven-seater. Seat folds down and out of sight when not in use. Comes complete with armrests, seat belts, and entry/exit handle above tailgate. Available in beige and black.



Rear Head Restraints, Wagon (not shown). Designed to accent the interior and provide additional comfort to rear seat passengers.

Description	Model	Year	P/N	Description	Model	Year	P/N
Air Conditioning				Trunk Mat	All Sedans	1975-1986	1128444-5
Base Kit (US)	B21, B23	1976-1984	1188564-7	Wagon Cargo Mat	All Wagons	1975-1986	283539-5
Base Kit (Canada)	B230F-240	1986	1388234-5	Maintenance Items			
Base Kit	B230	1985	1333991-6	DOT 4 Brake Fluid (US only)	All Models		284051-0
Base Kit (Canada)	B21FT	1981-1985	1188564-7	Coolant (Type C)	All Models		1333755-5
Installation Kit - Power Steering	B21, B23	1977-1984	1129100-2	Cooling System Rust Inhibitor (US only)	All Models		284033-8
Idle Compensation Kit (Canada)	B23E, FT	1981-1984	1129166-3	Gas Line Anti-Freeze (US only)	All Models		284032-0
(Canada)	B21A	1983-1984	1188851-8	Liquid Polish	All Models		1128865-1
(Canada)	B21A	1976-1982	1129166-3	Lock De-Icer (US only)	All Models		284037-9
(U.S.)	B21F	1976-1981	1188272-7	Windshield Washer Solvent & Anti-Freeze (US only)	All Models		284031-2
Base Kit	D24	1980-1985	1333928-8				
Installation Kit	D24	1980-1985	1129098-8				
Audio Systems and Components				Paints			
Cassettes				Alloy Wheel Spray - Grey			Code 1128736-4
TD-3110 AM/FM Stereo Cassette Deck and Amplifier	All Models	1981-1986	1343012-9	Diplomatic Black - Touch Up Brush		019	283476-0
CR-3183 AM/FM Stereo Cassette Receiver	All Models	1981-1986	1343097-0	Spray Can		019	277500-5
Stereo				Cascade White - Touch Up Brush		042	283478-6
SR-3122 AM/FM Stereo Receiver	All Models	1981-1986	1343091-3	Spray Can		042	3681800-3
Power Amplifiers				Royal Blue - Touch Up Brush		096	283490-1
HA-5115 2x15 Watt Amplifier	CR-3183 Receiver	1981-1986	1384523-5	Spray Can		096	3681804-5
HA-3121 2x25 Watt Amplifier	CR-3183 Receiver	1981-1986	1343089-7*	Carlsbad Yellow - Touch Up Brush		128	1128344-7
HA-3141 2x40 Watt Amplifier	CR-3183 Receiver	1981-1986	1343088-9*	Spray Can		128	1128339-7
HA-4111 4x20 Watt Amplifier	CR-3183 Receiver	1981-1986	1343094-7	Cherokee Red - Touch Up Brush		129	1128625-9
*Adapter Plug Required	HA-3121 HA-3141 Amps	1981-1986	1363501-6	Spray Can		129	3681830-0
Fader Control	CR-3183 Receiver	1981-1986	1129461-8	Mystic Silver Met. - Touch Up Brush		130	1128622-6
Graphic Equalizer				Spray Can		130	3681829-2
EQ-2110 Equalizer With Sound Effector	All Radios Exc SR-3122	1981-1986	1129916-1	Glacier Blue Met. - Touch Up Brush		134	1128771-1
Front Speakers				Spray Can		134	3681837-5
HT-173 20 Watt Door With Grilles (PR)	All Models	1976-1986	1129596-1	Coronado Gold Met. - Touch Up Brush		135	1128774-5
HT-173 20 Watt Door w/o Grilles (PR)	All Models	1982-1986	1129529-2	Spray Can		135	3681838-3
Rear Speakers				Kingsmere Green Met. - Touch Up Brush		136	1128777-8
20 Watt 2-Way Box (Each)	All Sedans	1976-1986	283195-6	Spray Can		136	1128775-2
HT-172 20 Watt Dual-Cone With Grille (EA)	All Sedans	1976-1986	1343100-2	Artesia Beige - Touch Up Brush		137	1128780-2
20 Watt Wagon With Grilles (Pair)	All Wagons	1976-1986		Spray Can		137	1128778-6
- Black			1129481-6	Castlewood Brown - Touch Up Brush		138	1128783-6
- Blue			1129564-9	Spray Can		138	1128781-0
- Beige			1129565-6	Scotia Blue - Touch Up Brush		139	1128786-9
- Brown			1129566-4	Spray Can		139	3681939-9
Antennas				Richelieu Red - Touch Up Brush		141	1129202-6
Power Antenna	All Sedans	1976-1986	1129869-2	Spray Can		141	3681937-3
Black A-Post Antenna	All Models	1976-1986	1128483-3	Vernon Green - Touch Up Brush		142	1129205-9
Retractable Black Rear Fender Antenna	All Sedans	1976-1986	1128735-6	Spray Can		142	1129203-4
Cruise Control				Woodside Tan Met. - Touch Up Brush		144	1129211-7
Base Kit	B230	1986	1357880-2	Spray Can		144	1129209-1
Base Kit	All Except B21A	1980-1985	1333962-7	Cameo Brown - Touch Up Brush		146	1129638-1
Installation Kits (Canada)	B23F, B230F	1983-1985	1188832-8	Spray Can		146	1129636-5
	B23E	1981-1983	1128725-7	Cyprus Green Met. - Touch Up Brush		147	1129641-5
	D24	1980-1985	1188214-9	Spray Can		147	1129639-9
	B21FT	1981-1985	1333535-1	Seneca Red Met. - Touch Up Brush		148	1129644-9
(U.S.)	B21LH	1982	1188389-9	Spray Can		148	1129642-3
	B21F	1980-1982	1128725-7	Black - Touch Up Brush		151	1129369-3
	B28F	1980-1982	1128724-0	Spray Can		151	1129368-5
Care and Maintenance				Light Yellow - Touch Up Brush		152	1129371-9
Floor Mat Sets (2 Front & 2 Rear)	All Models	1975-1986		Spray Can		152	1129370-1
Koko - Brown Tweed			1189817-8	Beige - Touch Up Brush		172	1129373-5
Black			1189818-6	Spray Can		172	1129372-7
Tan			1189819-4	Red - Touch Up Brush		173	1129375-0
Blue			1189820-2	Spray Can		173	1129374-3
Plush - Brown			1189900-2	Red - Touch Up Brush		175	1129377-6
Black			1189901-0	Spray Can		175	1129376-8
Beige			1189902-8	Silver/Grey - Touch Up Brush		177	1129723-1
Blue			1343699-3	Spray Can		177	1129722-3
Thermoplastic - Black			1129300-8				
Blue			1129301-6				
Beige			1129302-4				
Brown			1129304-0				

Table listing parts for the 240 Series. Columns include Description, Model, Year, P/N, and Description. Categories include Silver/Green-Touch Up, White-Touch Up, Yellow-Touch Up, Blue Met.-Touch Up, Black Met.-Touch Up, Blue Met.-Touch Up, Beige-Touch Up, Dark Brown-Touch Up, Dark Blue-Touch Up, Brown Met.-Touch Up, Red-Touch Up, Grey-Touch Up, Mid. Blue-Touch Up, Dark Grey-Touch Up, Blue-Touch Up, Beige Met.-Touch Up, Blue-Green Met.-Touch Up, Comfort and Convenience, and GT Sport and Handling.

(Refer to the 1985-1986 Personal Accessory Catalogue for our complete line of Personal Accessories.)

Table listing parts for the 240 Series. Columns include Description, Model, Year, P/N, and Description. Categories include Safety and Security, Seating, Headrest Cushions Front-Checked Cloth (Each), Headrest Cushion Rear-Checked Cloth (Each), Headrest Cushions Front, Headrest Cushions Rear, Headrest Cushions Front-Cloth (Each), Headrest Cushions Rear-Cloth (Each), Headrest Cushions Front-Ribbed Plush Velour (Each), Headrest Cushions Rear-Ribbed Plush Velour (Each), Headrest Cushions Front-Leather (Each), Headrest Cushions Rear-Leather (Each), Headrest Cushion Front-Velour (Each), Headrest Cushions Front-Cloth (Solid Color), Headrest Cushions Rear-Cloth (Solid Color), Travel, Towing and Load Carrying, and Cargo Guard.

VOLVO

Printed in USA

VPD-75M985