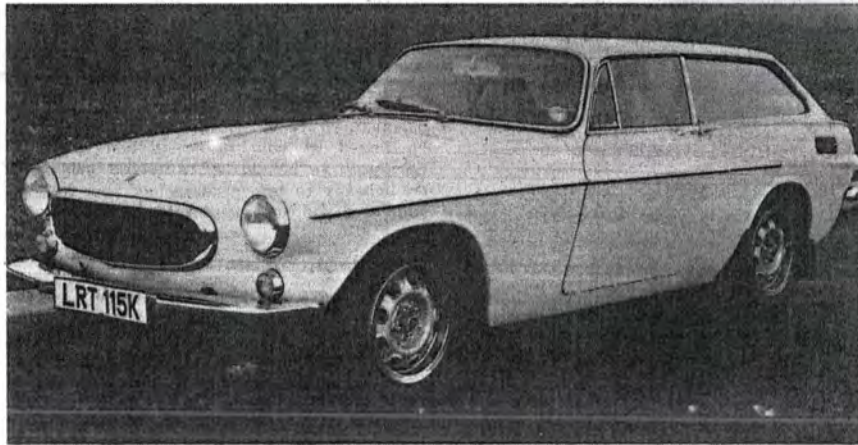


VOLVO RANGE

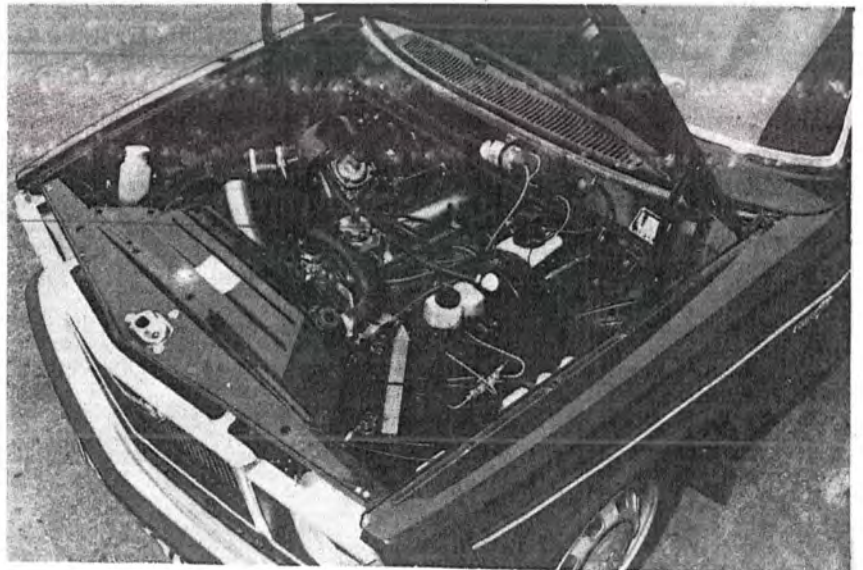
Right: The 145 Estate, available with either single or twin carburettor engine or Bosch electronic petrol injection. Below right: The rearward-facing occasional seats have both armrests and head restraints



Latest in the Volvo range is the 1800ES, fitted with the 120 bhp Bosch fuel injection engine. Bottom: The tailgate has no frame and hinges, lock and struts are either bolted through or attached by ultra-strong adhesive



The four-cylinder 1986 c.c. engine, in single carburettor form



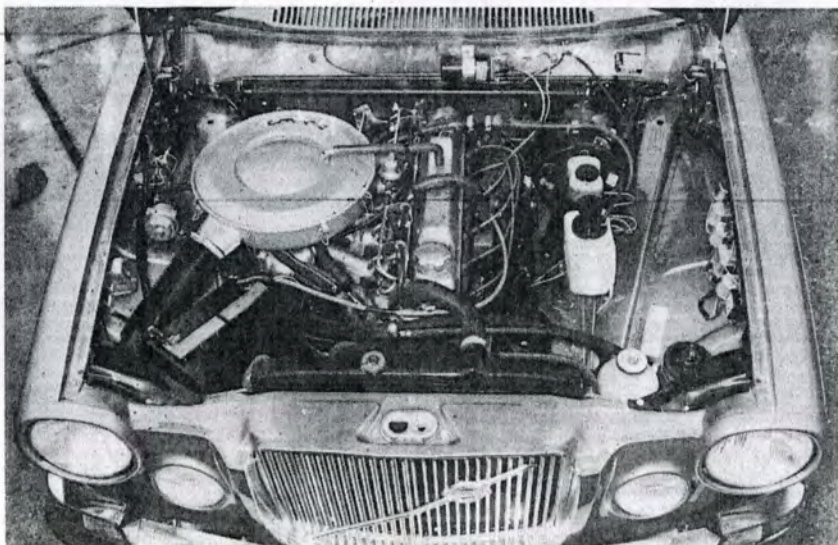
Although Volvo have only four basic body styles and two engines, they produce no fewer than 15 different individual models, ranging from the 144 to the new 1800ES. Heated rear windows, seat belts and head restraints are standard throughout the range



In basic form, the 144 has a single carburettor engine. The S version has twin carburettors and the GL Bosch petrol injection and sun roof. The basic and GL versions offer automatic transmission as an extra, and the GL alone, overdrive



Below: Largest in the range is the six-cylinder 164, available with twin Stromberg carburettors or Bosch petrol injection. Overdrive is standard, automatic transmission an extra. The smaller front grille and built-in auxiliary lamps are recognition points



Left: The 164 2,979 c.c. engine in fuel-injection form. Servo brakes are standard on the entire range